

WINDSOR PLACE SUBDIVISION "SECTION B"

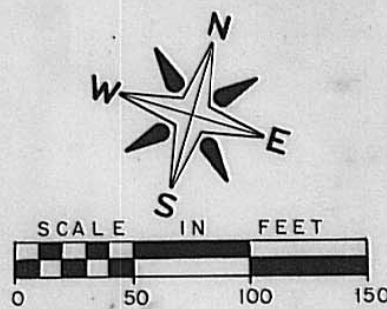
No. 102602
 FEE: \$2.16
 TRANSFERRED: MAY 22, 1981

WINDSOR PLACE "SECTION B"
 14.6874 ACRES
 CITY OF LONDON
 RECEIVED: MAY 22, 1981
 AT: 3:48 PM
 RECORDED: MAY 22, 1981

AUDITOR Raymond M. Weiner
 RECORDER William F. McGinnis

TRANSFERRED May 22 19 81.

RECORDED May 22 at 3:48 PM 19 81.
 Fee: \$ 2.16 Plat Book No. 2, page 235



Windsor Place Subdivision "Section B"
 Zoning Classification R-1

CURVE DATA					
NO.		Δ	R	T	L
1	R/W	104°	25.00'	32.00'	45.38'
2	R/W	76°	25.00'	19.53'	30.78'
3	℄	26°58'27"	20.847'	50.00'	97.24'
4	℄	40°58'27"	125.00'	46.70'	87.50'
5	R/W	90°	25.00'	25.00'	35.36'
6	℄	20°	200.00'	35.27'	69.46'
7	R/W	29°55'31"	100.00'	26.73'	52.23'

NOTE: Lots are numbered in accordance with "Section A".

Dedication:
 Situated in the State of Ohio, County of Madison, City of London, and containing 14.6874 acres, being part of that tract conveyed to the Central Ohio Development Company, an Ohio Corporation, by warranty deed in the Madison County Recorder's Office, London, Ohio, deed book 195, page 241.

BEARINGS ARE REFERENCED TO THE RECORDED PLAT FOR "SECTION A"

The undersigned, Central Ohio Development Company, an Ohio Corporation, by C. Carlton Hartley, duly authorized in the premises, does hereby certify that this plat correctly represents the Windsor Place Subdivision, "Section B", consisting of 23 Lots, does hereby accept this plat of same and dedicate to public use as such all or parts of the Street, Drive, Avenue and Courts shown hereon and not heretofore dedicated.

Easements are reserved where indicated on the plat for the construction, operation and maintenance of public and private utilities, the cable television industry and storm drainage, both above and beneath the surface of the ground.

In Witness Whereof, I have hereunto set my hand this 18th day of May, 1981.

C. Carlton Hartley
 officer
 Central Ohio Development Company
 an Ohio Corporation

Witness:
Lisa Robertson David E. Eckstein

State of Ohio S.S. County of Madison Before me, a Notary Public in and for said County, personally came C. Carlton Hartley, of the Central Ohio Development Company, an Ohio Corporation, who acknowledged the signing of the foregoing instrument to be his free and voluntary act and deed and the free and voluntary act and deed of said Central Ohio Development Company for the uses and purposes therein expressed.

In Witness Whereof I have hereunto set my hand and affixed my official seal this 18 day of May, 1981

SURVEYOR'S CERTIFICATE:
 The accompanying plat represents a subdivision of 14.6874 acres of land in City of London, Madison County, Ohio.

All measurements are in feet and decimal parts of a foot.
 All corners of Lots, tangent points on rights-of-way and intersections of Lot lines with rights-of-way are monumented with 3/4" dia. by 30" in length iron pipes with aluminum caps marked P.S. 5969.

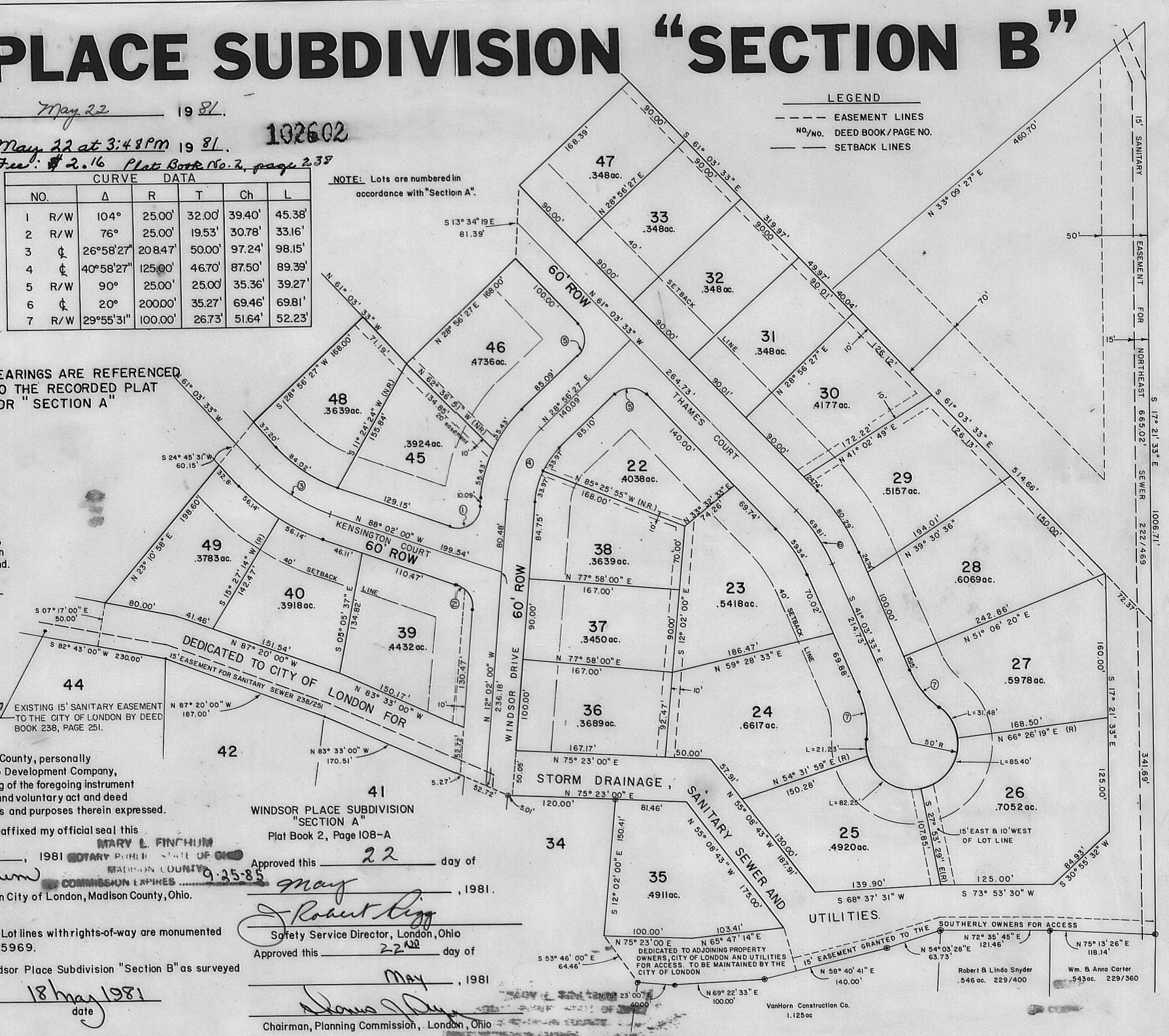
I Hereby certify that the accompanying plat is a correct representation of Windsor Place Subdivision "Section B" as surveyed in March, 1980.

Neil Babb
 NEIL BABB P.S. 5969, P.E. 36205.
 BABB ENGINEERING AND SURVEYING
 11 EAST FIRST ST., P.O. BOX 374
 LONDON, OHIO 43140

18 May 1981
 date

WINDSOR PLACE SUBDIVISION "SECTION A"
 Plat Book 2, Page 108-A
 Approved this 22 day of May, 1981.

Robert Ligg
 Safety Service Director, London, Ohio
 Approved this 22 day of May, 1981.
Thomas J. ...
 Chairman, Planning Commission, London, Ohio



LEGEND
 --- EASEMENT LINES
 NO./NO. DEED BOOK / PAGE NO.
 --- SETBACK LINES

15' SANITARY
 EASEMENT FOR
 NORTHEAST 66.02'
 SEWER 222.469
 1006.71'
 S 17° 21' 33" E
 341.69'

VanHorn Construction Co.
 1.125 ac

Robert B Linda Snyder
 .546 ac. 229/400
 Wm. B Anna Carter
 .543 ac. 229/360