

# WINDSOR PLACE

## SECTION "C" LONDON, OHIO

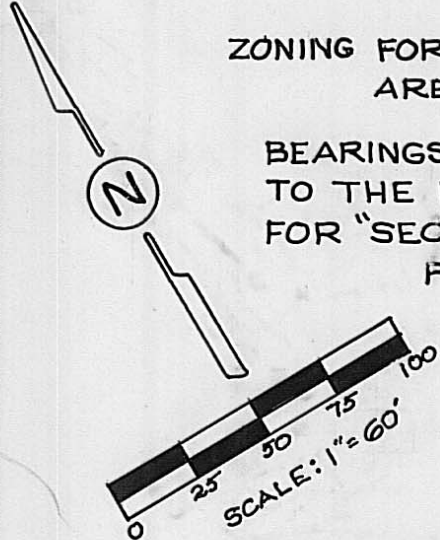
893874

MADISON COUNTY AUDITOR *Ronald M. Name*  
TRANSFERRED THIS 14 DAY OF December, 1989

MADISON COUNTY RECORDER  
RECORDED THIS 14 DAY OF Dec., 1989  
PLAT BOOK PAGE NO. *Slide #606*  
*Fee \$19.55*

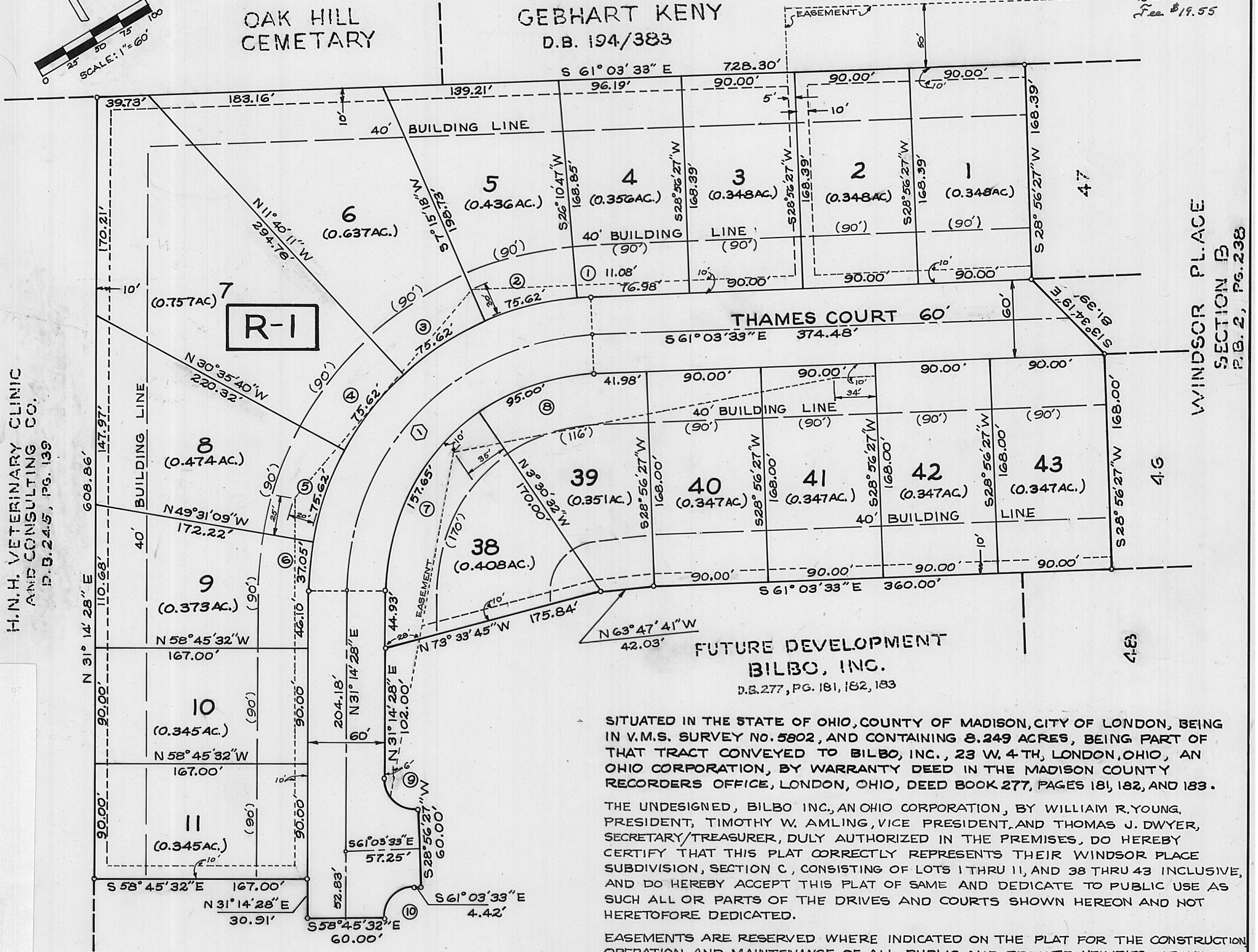
ZONING FOR ENTIRE SUBDIVISION  
AREA IS R-1

BEARINGS ARE REFERENCED  
TO THE RECORDED PLAT  
FOR "SECTION A",  
P.B. 2, PG. 108-A



OAK HILL  
CEMETARY

GEBHART KENY  
D.B. 194/383



H.N.H. VETERINARY CLINIC  
AND CONSULTING CO.  
P.B. 245, PG. 139

WINDSOR PLACE  
SECTION B  
P.B. 2, PG. 238

FUTURE DEVELOPMENT  
BILBO, INC.  
D.B. 277, PG. 181, 182, 183

SITUATED IN THE STATE OF OHIO, COUNTY OF MADISON, CITY OF LONDON, BEING  
IN V.M.S. SURVEY NO. 5802, AND CONTAINING 8.249 ACRES, BEING PART OF  
THAT TRACT CONVEYED TO BILBO, INC., 23 W. 4TH, LONDON, OHIO, AN  
OHIO CORPORATION, BY WARRANTY DEED IN THE MADISON COUNTY  
RECORDERS OFFICE, LONDON, OHIO, DEED BOOK 277, PAGES 181, 182, AND 183.

THE UNDESIGNED, BILBO INC., AN OHIO CORPORATION, BY WILLIAM R. YOUNG,  
PRESIDENT, TIMOTHY W. AMLING, VICE PRESIDENT, AND THOMAS J. DWYER,  
SECRETARY/TREASURER, DULY AUTHORIZED IN THE PREMISES, DO HEREBY  
CERTIFY THAT THIS PLAT CORRECTLY REPRESENTS THEIR WINDSOR PLACE  
SUBDIVISION, SECTION C, CONSISTING OF LOTS 1 THRU 11, AND 38 THRU 43 INCLUSIVE,  
AND DO HEREBY ACCEPT THIS PLAT OF SAME AND DEDICATE TO PUBLIC USE AS  
SUCH ALL OR PARTS OF THE DRIVES AND COURTS SHOWN HEREON AND NOT  
HERETOFORE DEDICATED.

EASEMENTS ARE RESERVED WHERE INDICATED ON THE PLAT FOR THE CONSTRUCTION  
OPERATION, AND MAINTENANCE OF ALL PUBLIC AND PRIVATE UTILITIES, ABOVE  
AND BENEATH THE SURFACE OF THE GROUND, AND WHERE NECESSARY, FOR THE  
CONSTRUCTION, OPERATION AND MAINTENANCE OF SERVICE CONNECTIONS TO ALL  
ADJACENT LOTS AND LANDS, AND FOR STORM WATER DRAINAGE, SURFACE AND  
UNDERGROUND. THE EASEMENTS SHOWN ARE RESERVED FOR UNDERGROUND  
CABLE TELEVISION FACILITIES, ONLY IF SUCH UNDERGROUND FACILITIES ARE  
INSTALLED CONCURRENTLY WITH THE INSTALLATION OF ELECTRIC AND  
TELEPHONE COMPANIES' FACILITIES.

IN WITNESS WHEREOF, WILLIAM R. YOUNG, TIMOTHY W. AMLING, AND THOMAS  
J. DWYER HAVE HEREUNTO SET THEIR HANDS THIS 6 DAY OF Dec., 1989.

WITNESSES:

OFFICERS:

*William R. Young*  
WILLIAM R. YOUNG

*Timothy W. Amling*  
TIMOTHY W. AMLING

*Thomas J. Dwyer*  
THOMAS J. DWYER

STATE OF OHIO S.S.

COUNTY OF MADISON BEFORE ME, A NOTARY PUBLIC IN AND FOR SAID COUNTY,  
PERSONALLY CAME WILLIAM R. YOUNG, TIMOTHY W. AMLING, AND THOMAS J. DWYER,  
OF BILBO, INC., WHO ACKNOWLEDGED THE SIGNING OF THE FOREGOING INSTRUMENT  
TO BE THEIR FREE AND VOLUNTARY ACT AND DEED AND THE FREE AND VOLUNTARY  
ACT AND DEED OF SAID BILBO, INC., FOR THE USES AND PURPOSES THEREIN  
EXPRESSED. IN WITNESS WHEREOF I HAVE HEREUNTO SET MY HAND AND AFFIXED MY  
OFFICIAL SEAL THIS 6 DAY OF December, 1989.

CITY ACCEPTANCE:

WE APPROVE AND ACCEPT THE SANITARY, WATER, STREET AND STORM-  
SEWER IMPROVEMENTS FOR PUBLIC USE AND MAINTENANCE.

APPROVED *12/12/89*  
DATE

*Robert LeBeau*  
SAFETY SERVICE DIRECTOR

APPROVED *12/12/89*  
DATE

*William J. Colson*  
CHAIRMAN, PLANNING COMMISSION

APPROVED *12/12/89*  
DATE

*Joseph F. Anderson*  
CHAIRMAN, BOARD OF PUBLIC UTILITIES

WOLFE ENGINEERING  
4846 FRESHWATER ROAD  
DELAWARE, OHIO 43015

BY: *Charles R. Wolfe*  
REGISTERED SURVEYOR NO. 6186

APPROVED *12/12/89*  
DATE

*Arthur W. Hamilton*  
MAYOR, CITY OF LONDON, OHIO

### ROAD CURVE DATA

NO.	Δ	R	T	L	CH.	CH. BEARING
①	87°41'59"	200'	192.13'	306.13'	277.11'	N75°05'27"E

### LOT DIMENSIONS

NO.	Δ	R	T	L	CH.	CH. BEARING
①	2°45'40"	230'	5.54'	11.08'	11.08'	N62°26'23"W
②	18°55'29"	230'	38.33'	75.97'	75.62'	N73°16'57"W
③	18°55'29"	230'	38.33'	75.97'	75.62'	N87°47'33"E
④	18°55'29"	230'	38.33'	75.97'	75.62'	N68°52'04"E
⑤	18°55'29"	230'	38.33'	75.97'	75.62'	N49°56'35"E
⑥	9°14'23"	230'	18.59'	37.09'	37.05'	N35°51'39"E
⑦	55°15'00"	170'	88.97'	163.93'	157.65'	N58°51'58"E
⑧	32°26'59"	170'	49.47'	96.28'	95.00'	N77°17'02"W
⑨	92°18'01"	25'	26.02'	40.27'	36.06'	N14°54'33"W
⑩	87°41'59"	25'	24.02'	38.27'	34.64'	N75°05'27"E

I DO HEREBY CERTIFY THAT I HAVE SURVEYED THE ABOVE PREMISES,  
PREPARED THIS PLAT, AND CERTIFY THAT THIS PLAT IS CORRECT.  
ALL DIMENSIONS ARE SHOWN IN FEET AND DECIMAL PARTS  
THEREOF. DIMENSIONS SHOWN ALONG CURVES ARE CHORD  
MEASUREMENTS. IRON PINS ARE INDICATED BY THE SYMBOL  
○. PERMANENT MONUMENTS (1" SOLID IRON PIN) TO BE  
PLACED UPON COMPLETION OF CONSTRUCTION ARE INDICATED  
BY THE SYMBOL ⊙.

By: *Naomi W. Green*  
Naomi W. Green, Deputy