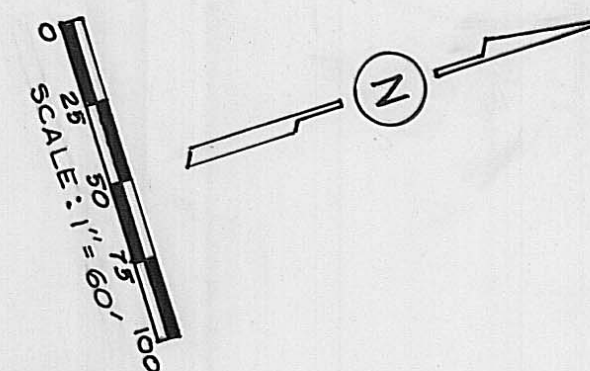


WESTWOOD ESTATES

SECTION 4, PART 6

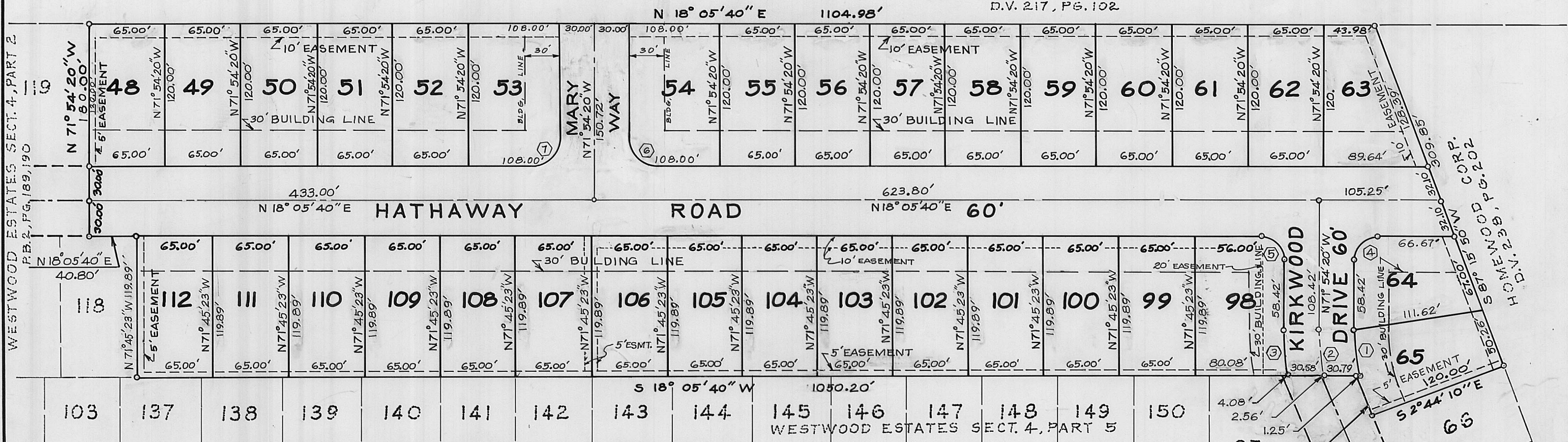
VILLAGE OF JEFFERSON WEST JEFFERSON, OHIO

CITY NATIONAL BANK & TRUST CO., TRUSTEE
D.V. 217, P. 102



WESTWOOD ESTATES SECT. 4, PART 2
P.B. 2, PG. 189, 190

HOMENWOOD CORP.
H.D.N. 2-238, PG. 202



CURVE DATA						
NO.	Δ	R	T	L	CHORD	CH. BEARING
①	14° 07' 06"	170.00'	21.05'	41.89'	41.78'	N 78° 57' 53" W
②	11° 57' 59"	200.00'	20.96'	41.77'	41.69'	N 77° 53' 19" W
③	10° 19' 45"	230.00'	20.90'	41.70'	41.64'	N 77° 05' 56" W
④	90° 0' 00"	20.00'	20.00'	31.42'	28.28'	S 26° 54' 20" E
⑤	90° 0' 00"	20.00'	20.00'	31.42'	28.28'	N 63° 05' 40" E
⑥	90° 0' 00"	20.00'	20.00'	31.42'	28.28'	N 63° 05' 40" E
⑦	90° 0' 00"	20.00'	20.00'	31.42'	28.28'	S 26° 54' 20" E

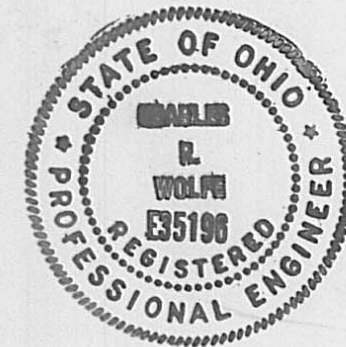
NOTE: THE ROADWAY & UTILITY EASEMENTS ACROSS LOTS 53 AND 54 ARE FOR A FUTURE STREET. A PUBLIC ROADWAY MAY BE CONSTRUCTED IN THE FUTURE IF APPROVED BY THE VILLAGE OF WEST JEFFERSON. IF A ROADWAY IS CONSTRUCTED, NONE OF THE IMPROVEMENTS WITHIN THE EASEMENTS SHALL BE ASSESSED AGAINST THE OWNERS OF LOTS 53 AND 54.

I DO HEREBY CERTIFY THAT I HAVE SURVEYED THE ABOVE PREMISES, PREPARED THIS PLAT, AND CERTIFY THAT THIS PLAT IS CORRECT. ALL DIMENSIONS ARE SHOWN IN FEET AND DECIMAL PARTS THEREOF. DIMENSIONS SHOWN ALONG CURVES ARE CHORD MEASUREMENTS. IRON PINS ARE INDICATED BY THE SYMBOL . PERMANENT MONUMENTS (1" SOLID IRON PINS) TO BE PLACED UPON COMPLETION OF CONSTRUCTION ARE INDICATED BY THE SYMBOL .



WOLFE ENGINEERING
4846 FRESHWATER ROAD
DELAWARE, OHIO 43015

BY Charles R. Wolfe
REGISTERED SURVEYOR NO. 6186



SEE OR 221 pg. 2025
FOR A RELEASE + WAIVER