

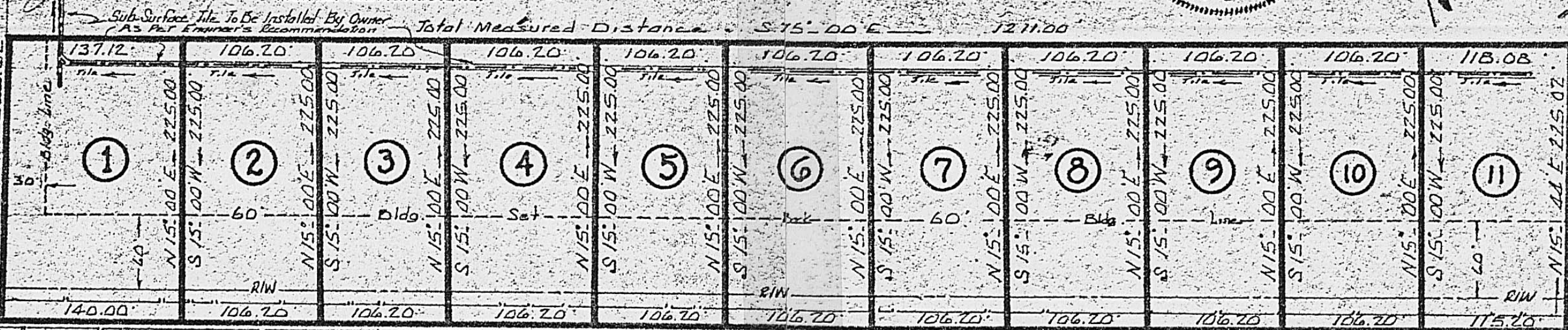
1. Iron Pins Set On All Back Corners And On Converse Huff Rd. R/W At Each Lot Line.
2. Bearings Adapted From A Survey From L.C. Roush - LeRoy Mast Survey.
3. Lot N^o 1 Contains 31,176.00^{sq}; Lot N^o 11 Contains 26,244.00^{sq}; All Others 23,895.00^{sq}.
4. Spikes Set In Pavement On Converse Huff Road At Each Lot Corner.
5. Minimum Set Back To Nearest Bldg. Line is 60' From Right Of Way Pins.



Vernon Royce
 Approved - San. Health Dept.
W. Paul, P.E.
 Approved - Madison Co. Engr.

Keith R. Rowland, Mad. Co. Planning Com.
Edward J. Perry, Mad. Co. Commissioner
John C. Pitt, Mad. Co. Commissioner
John L. ..., Mad. Co. Commissioner

Howard Foust Jr. Original 35.02 AC
 Remaining 28.16 AC



Total Measured Distance S 75° 00' E 1211.00'
 Total Measured Distance along centerline of 50' R/W N 75° 00' W 1211.00'

CONVERSE HUFF RD 50'

I certify this plot to be prepared from a field survey by me - in my opinion it is correct.

Rodger Irwin Baker
 Ohio Registration - S 405539

Scale: 1" = 100'

Sept. 1969

HOWARD FOUST-SUBD. "A"
6.255 AC. VMS N^o 7432 & 7756
DARBY TWP, MADISON CO., OHIO

11D