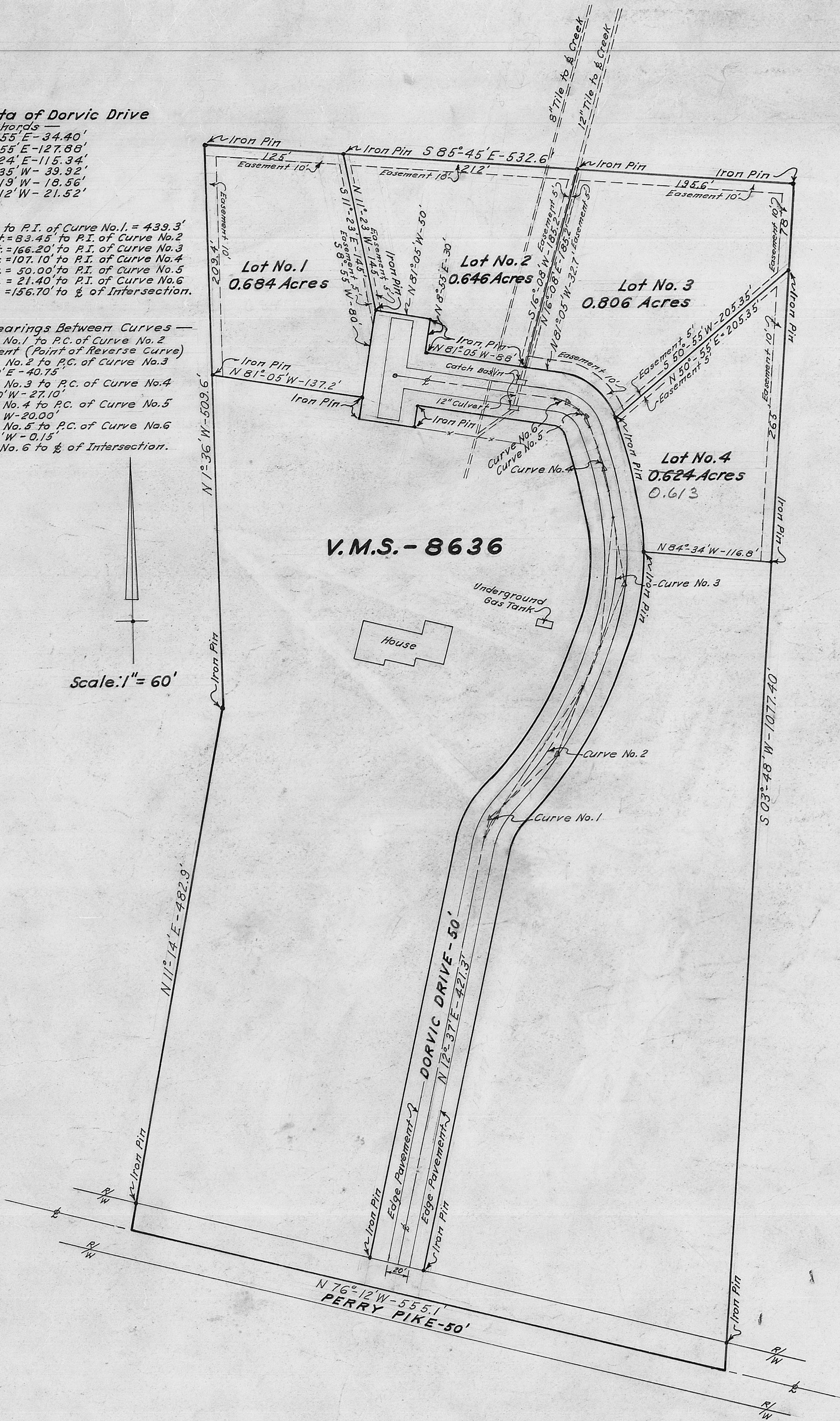
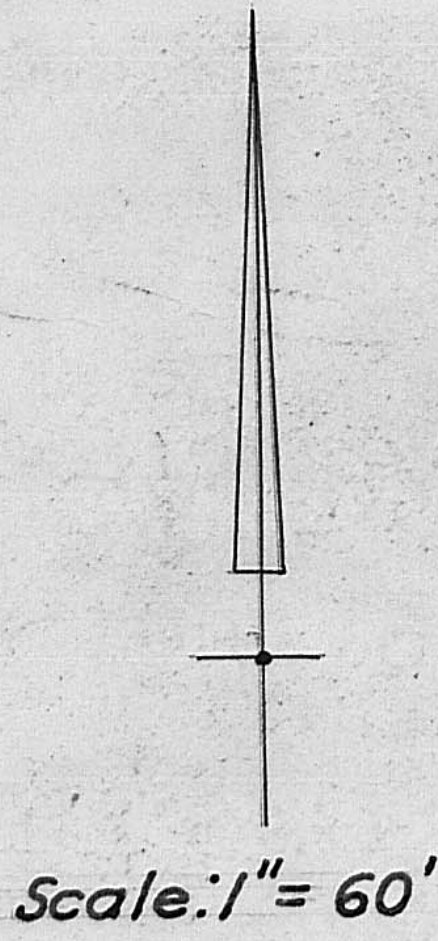


Curve Data of Dorvic Drive

- Chords**
 No.1 N 29°-55' E - 34.40'
 No.2 N 34°-55' E - 127.88'
 No.3 N 06°-24' E - 115.34'
 No.4 N 13°-35' W - 39.92'
 No.5 N 34°-19' W - 18.56'
 No.6 N 66°-12' W - 21.52'

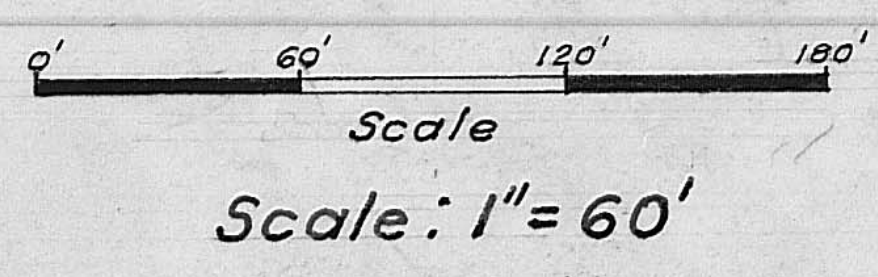
- ℄ Perry Pike to P.I. of Curve No.1. = 439.3'
 Δ = 34°-35' Rf = 83.45' to P.I. of Curve No.2
 Δ = 24°-33' Lt = 166.20' to P.I. of Curve No.3
 Δ = 32°-29' Lt = 107.10' to P.I. of Curve No.4
 Δ = 07°-29' Lt = 50.00' to P.I. of Curve No.5
 Δ = 34°-01' Lt = 21.40' to P.I. of Curve No.6
 Δ = 29°-45' Lt = 156.70' to ℄ of Intersection.

- Tangents & Bearings Between Curves**
 P.T. of Curve No.1 to P.C. of Curve No.2
 = No Tangent (Point of Reverse Curve)
 P.T. of Curve No.2 to P.C. of Curve No.3
 = N 22°-39' E - 40.75'
 P.T. of Curve No.3 to P.C. of Curve No.4
 = N 09°-50' W - 27.10'
 P.T. of Curve No.4 to P.C. of Curve No.5
 = N 17°-19' W - 20.00'
 P.T. of Curve No.5 to P.C. of Curve No.6
 = N 51°-20' W - 0.15'
 P.T. of Curve No.6 to ℄ of Intersection.



Plat showing Subdivision of Victor E. & Dorcas M. Humm in Darby Township, Madison County, Ohio, surveyed in 1966

I hereby certify the above plat is a correct survey and that no encroachments exist.



L.C. Roush
 Registered Engineer No. 5274