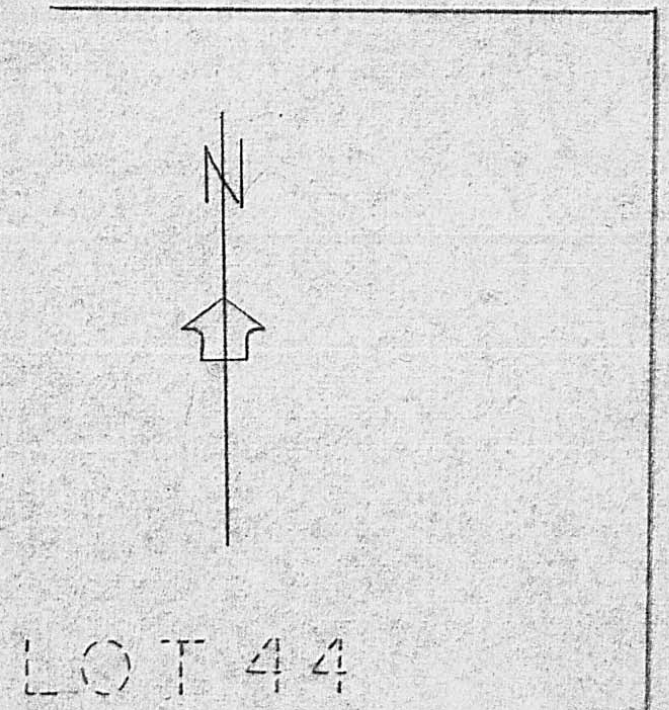


VILLAGE OF PLAIN CITY
 MADISON CO., OHIO
 V.M.S. 7758-7830

MAIN STREET 60'

S. 88° 30' E.

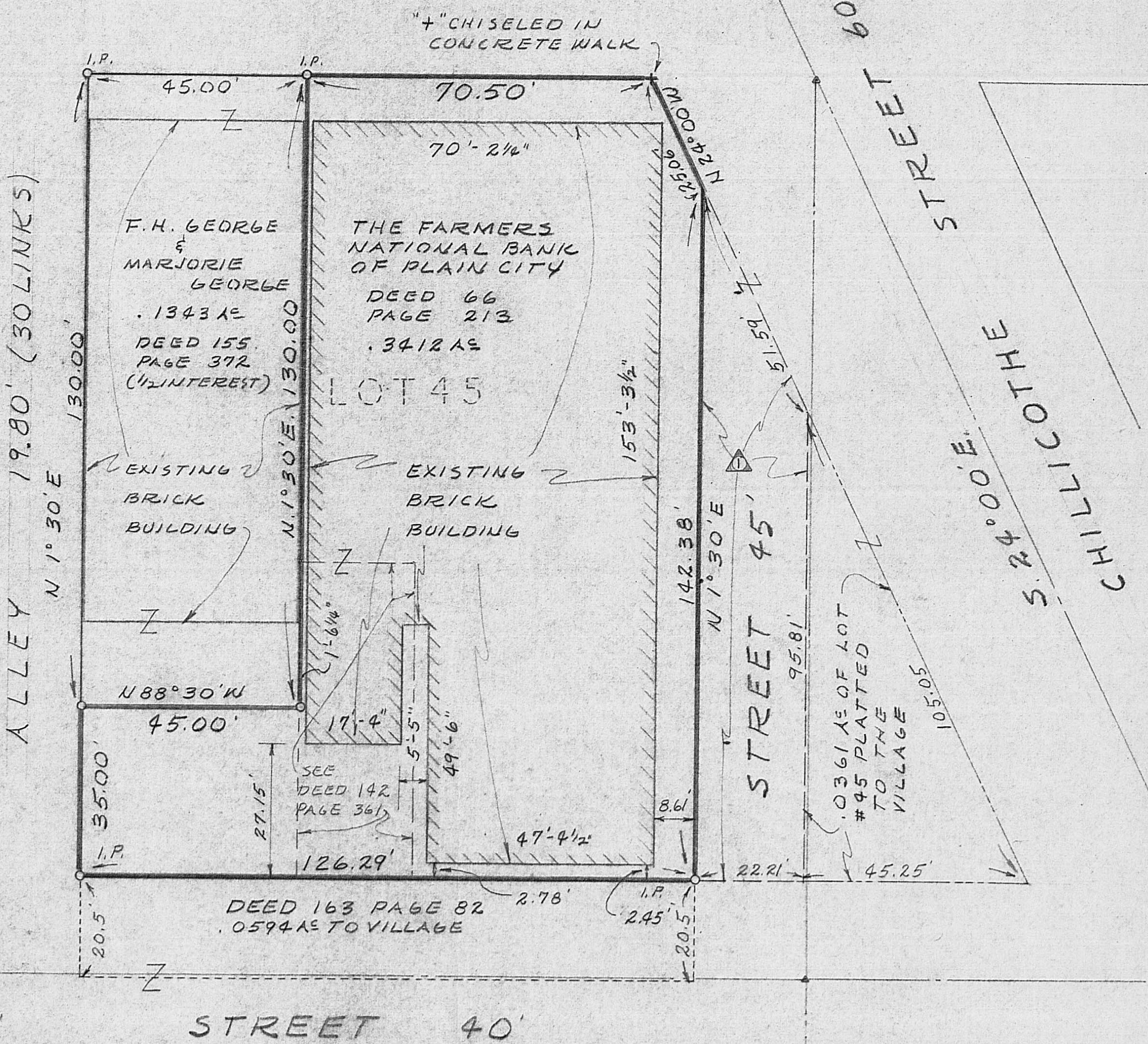


⚠ THIS AREA (.0607A±)
 WAS LOST TO GAY
 STREET (BY USAGE)

SEE: ISAAC BIGELOW'S
 SECOND ADDITION
 PLAT 1 PAGE 28

AUDITORS FILE:
 BANK: 3-14, 3-15
 F.H. GEORGE: 3-13

THE FIRST NATIONAL
 BANK OF PLAIN CITY
 CHARTER - DEED 18
 PAGE 378



SURVEYED BY:
 JOHN CIRCLE
 ENGINEER 19131
 SURVEYOR 4340
 187 SINSBURY DR.
 WORTHINGTON, OHIO 43085
 PK 614 885-9633

John Circle NOV 15, 1973



SURVEYED FOR:
 THE FARMERS NATIONAL
 BANK OF PLAIN CITY, OHIO
 ATT: ANDREW CAREY

GAY
 S. 1° 30' E.

DWG. NO 73-95
 SCALE 1" = 20'