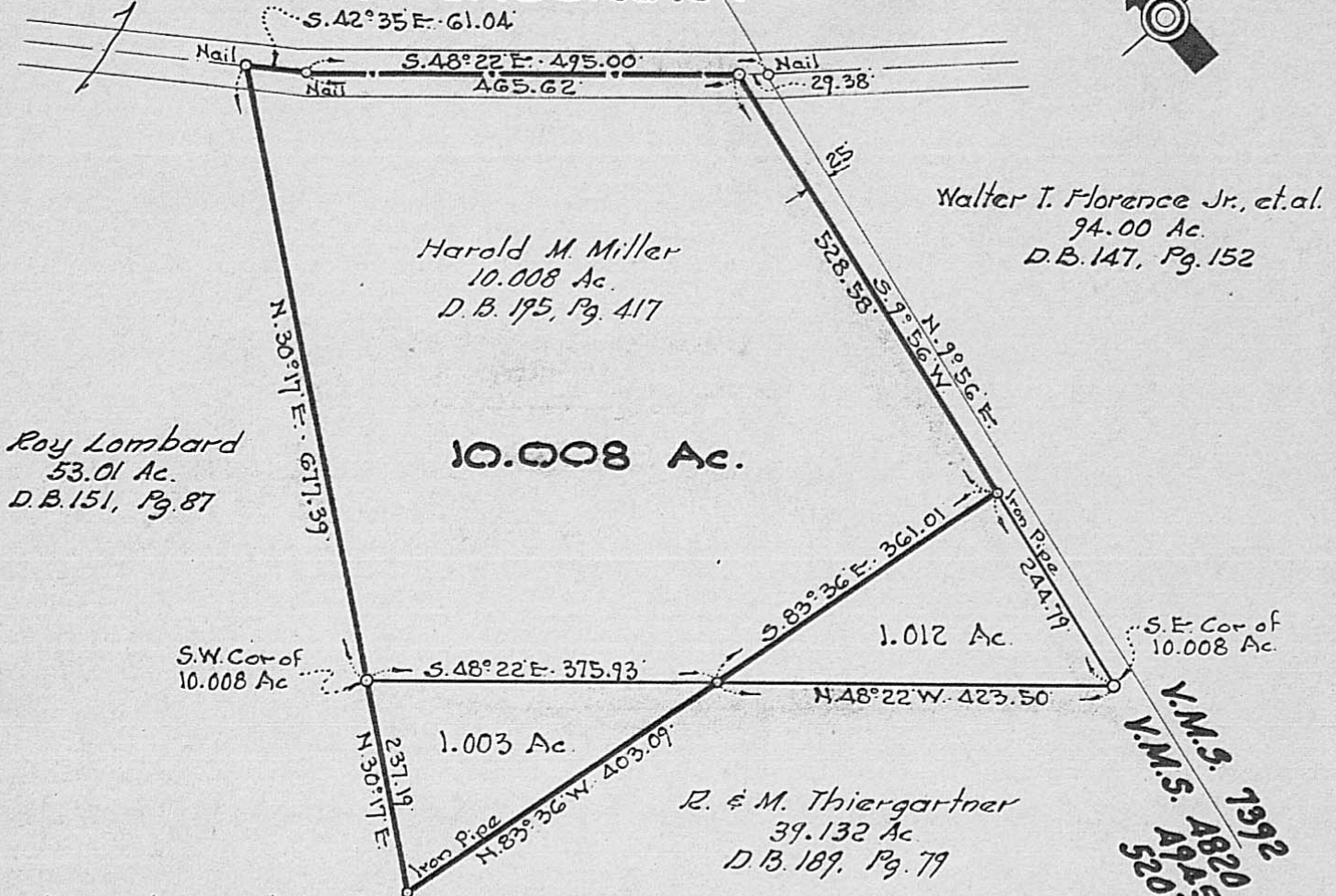


LOMBARD - CHUCKERY ROAD



Roy Lombard
53.01 Ac.
D.B. 151, Pg. 87

Harold M. Miller
10.008 Ac.
D.B. 195, Pg. 417

10.008 Ac.

Walter T. Florence Jr., et al.
94.00 Ac.
D.B. 147, Pg. 152

S.W. Cor of
10.008 Ac

1.003 Ac.

1.012 Ac.

S.E. Cor of
10.008 Ac

R. & M. Thiergartner
39.132 Ac.
D.B. 189, Pg. 79

V.M.S. 1392
V.M.S. 4820
V.M.S. 4945
V.M.S. 5207

I hereby certify that I have surveyed
the above property and set corners
as shown.

January 22, 1969.
Revised 2/18/69.
Revised 4/23/71

Gale L. Helms
Reg. Surveyor #4706



PLAT OF SURVEY 10.008 ACRES

V.M.S. 4820, 4945 & 5207
DARBY TOWNSHIP
MADISON COUNTY, OHIO
Scale: 1" = 200'

GALE L. HELMS & ASSOC.
Surveyors
205 CENTRAL PL.
WASHINGTON C.H., OHIO

Jan., 1969