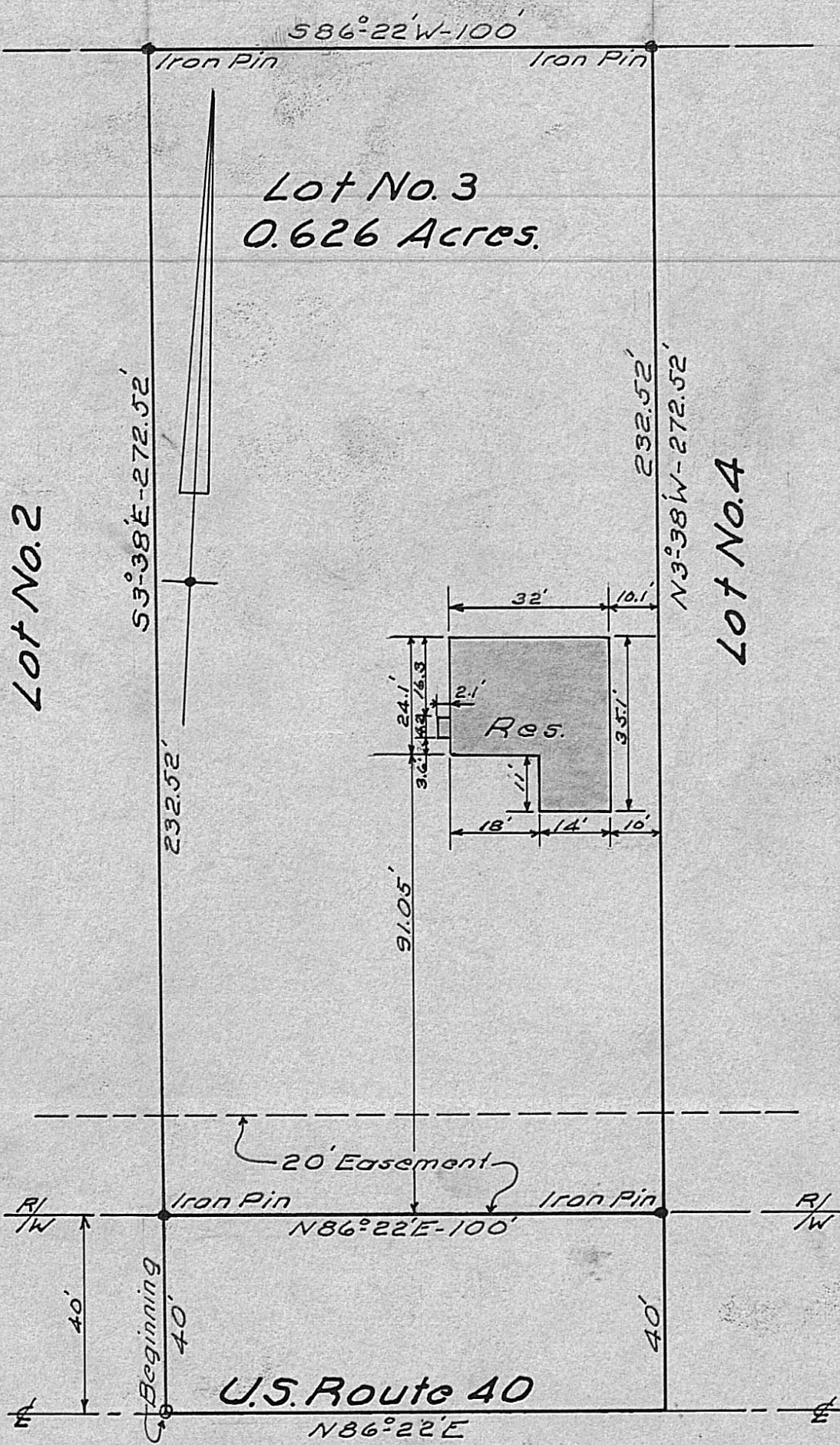


Beginning Point bears N86°22'E-297.76 feet from the southwest corner to Linmark Homes Corporation.



Lot No. 3

Linmark Homes Corporation
Deer Creek Twp., Madison Co., O.
made for Wallace Nichols.
1956.

I certify the above to be correct.

Scale 1"=30'

John F. Keddahl
Registered Engineer No. 5851.
October 23rd, 1956.