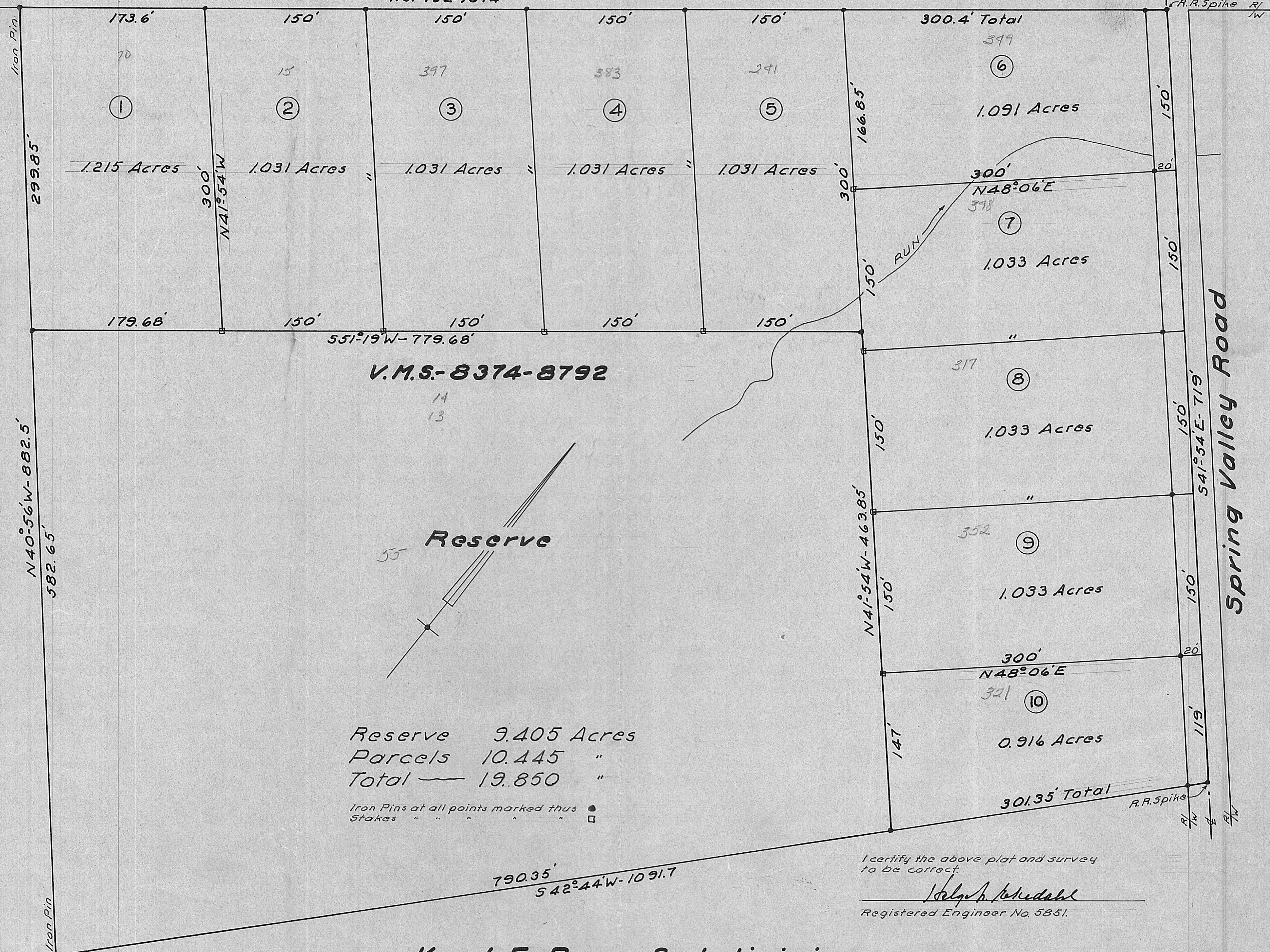


U.S. Route 42
N51°19'E-1074'



V.M.S.-8374-8792

Reserve

Reserve 9.405 Acres
 Parcels 10.445 "
 Total 19.850 "

Iron Pins at all points marked thus ●
 Stakes " " " " " □

I certify the above plat and survey to be correct.

Helge P. Schudahl
 Registered Engineer No. 5851.

Karl E. Burr Subdivision
Deer Creek Twp., Madison Co., Ohio.
 1957.