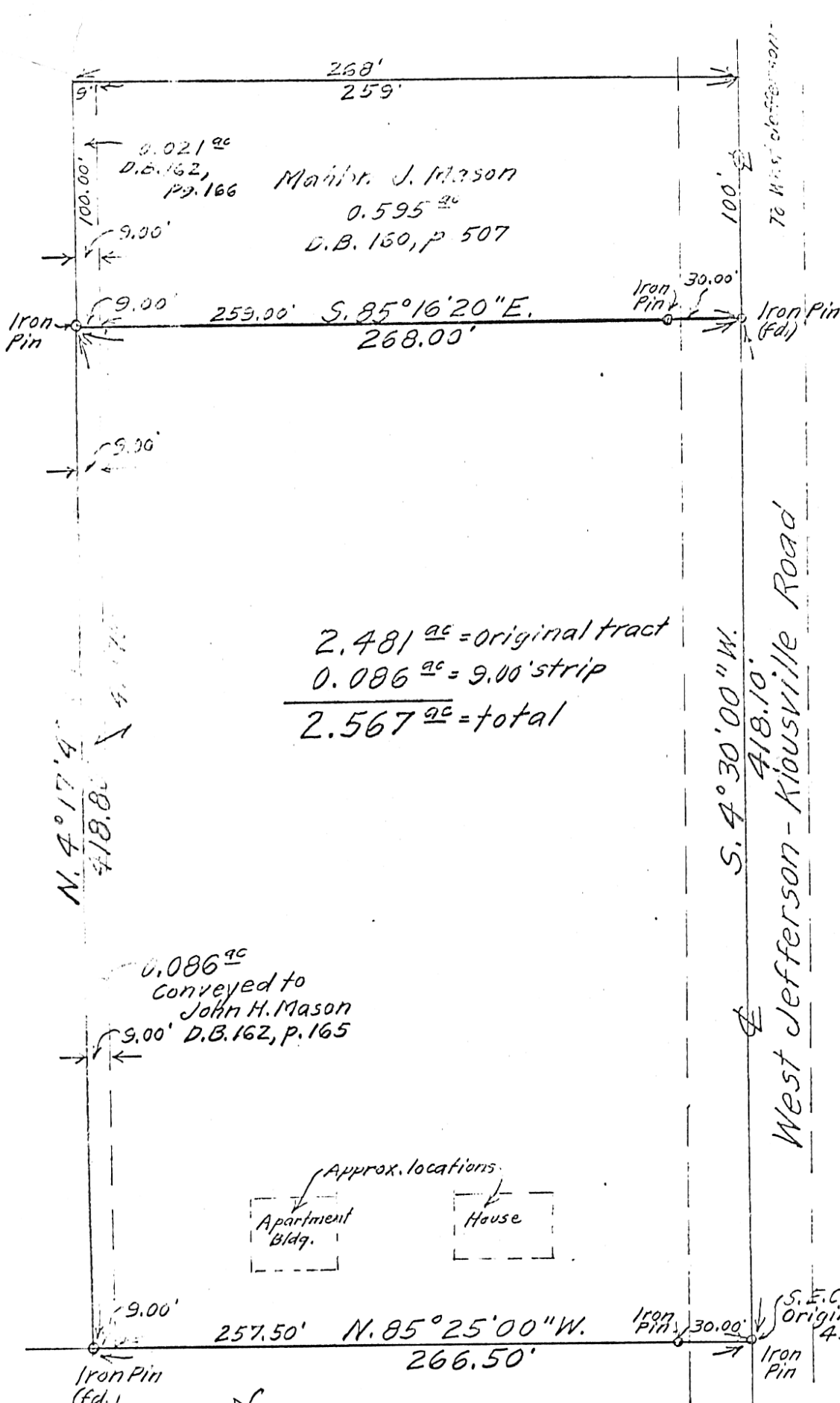
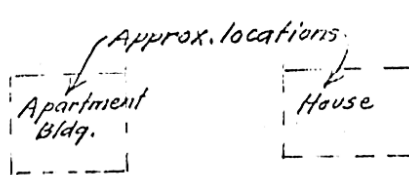


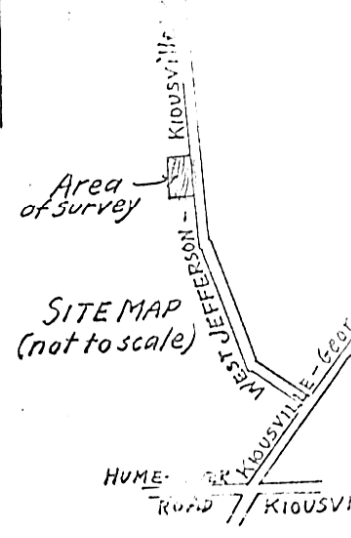
FAIRFIELD



2.481<sup>ac</sup> = original tract  
 0.086<sup>ac</sup> = 9.00' strip  
 2.567<sup>ac</sup> = total



- References
- Union Joint Stock Land Bank to J.H. Mason - 49.35° D.B. 155, p. 261
  - J.H. Mason, aka John H. Mason to Jerry R. Anderson 50.35° D.B. 155, p. 261
  - D.B. 155, p. 212 - 6/6/58
  - John H. & Sarah Margaret Mason to Mahlon Joseph Mason - 0.595<sup>ac</sup>
  - D.B. 160, p. 507 8/8/62
  - John H. & Sarah Margaret Mason, wife to John H. Mason to Mahlon Joseph Mason - 1966
  - D.B. 160, p. 507 8/8/62
  - D.B. 160, p. 507 8/8/62



SURVEY OF 2.567<sup>ac</sup> TRACT  
 VIR. MIL. SURVEY NO. 54  
 FAIRFIELD TWP - MADISON COUNTY  
 OHIO

Scale, 1" = 60' Jan. 1972  
 Survey of  
 John H. Mason Land

A. K. Harvey  
 Survey No. 2570