

2nd TRACT Vol. 144 Pg. 490 ORIGINAL BY DEED: 150 ACRES
 LESS SURVEYED 21.846 AC. = 128.15 ACRES RESIDUE

150 ACRES Vol. 144 Pg. 490
 CHARLES B. THOMAS

TAX MAP: 100 AC.
 (LESS 21.846 AC. SURVEY = 78.154 AC. RES.) IRON PIN & COR. POST
 EXISTING FENCE

TAX MAP: 50 AC.

S 74° 44' E 1596.51'
 1598.35'

RESIDUE 78.154 AC. OUT OF 100 AC.

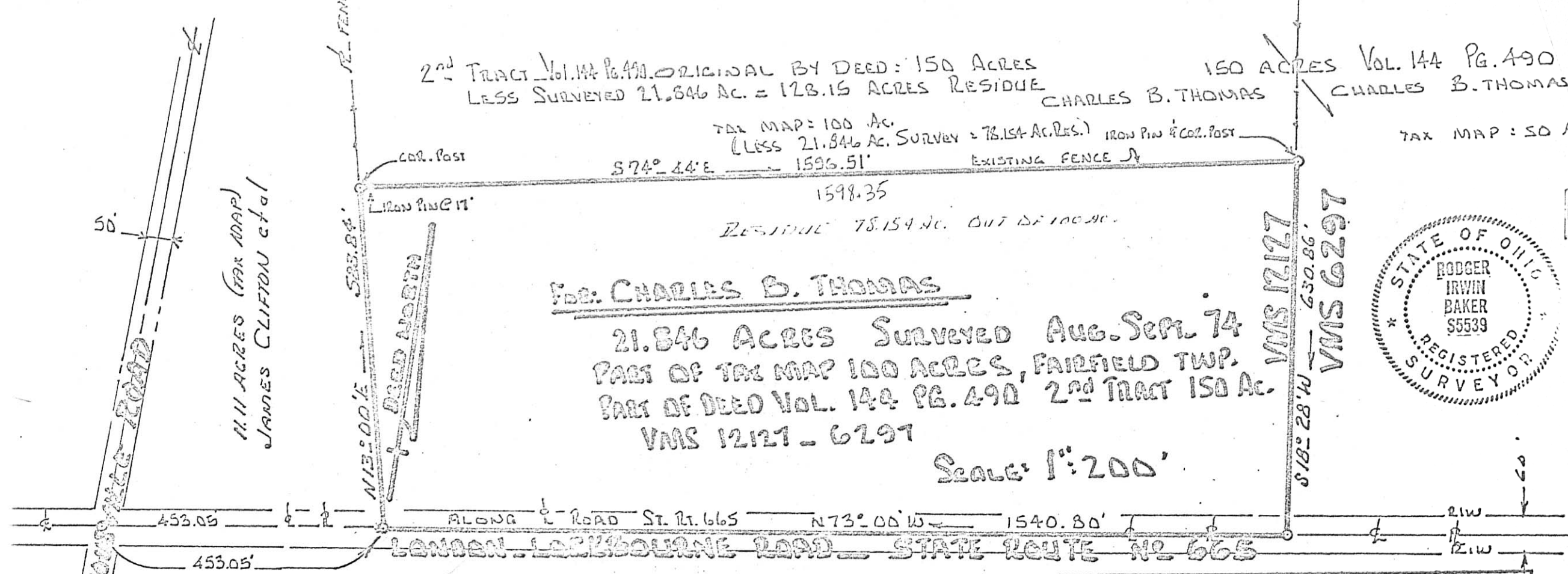
FOR: CHARLES B. THOMAS

21.846 ACRES SURVEYED AUG. SEPT. 74
 PART OF TAX MAP 100 ACRES, FAIRFIELD TWP.
 PART OF DEED VOL. 144 PG. 490 2nd TRACT 150 AC.

VMS 12127 - 6297

Scale: 1" = 200'

VMS 12127
 VMS 6297
 S 18° 28' W 650.86'



"This Plat Filed With Me For Acceptance"	
Co. Zoning _____	Date _____
Co. Engineer _____	Date _____
Co. Health _____	Date _____
Co. Auditor _____	Date _____

THIS 21.846 AC. PART OF 100 AC. IN VMS 12127

I certify I have prepared this plat and description from the best field data... and from the information furnished me.. In my opinion this platting does conform with the existing evidence.... I believe it to be correct:

Roger Irwin Baker
 Surveyor #S-05539... Ohio

PROPERTY BOUNDARY PLAT AND FIELD SURVEY
 OF 21.846 ACRES - VMS 12127 AND VMS 6297 -
 PART OF 2nd TRACT - DEED 150 ACRES - TAX MAP 100 AC
 RECORDED IN VOLUME 144 PAGE 490
 SITUATED IN FAIRFIELD TWP - MADISON COUNTY
 STATE ROUTE NO 665 - LONDON. LOCKBOURNE
 CHARLES B. THOMAS - PRESENT OWNER
 SCALE: 1" = 200' (OHIO) - SEPT. 1974
 BY: RODGER I BAKER S 5539

