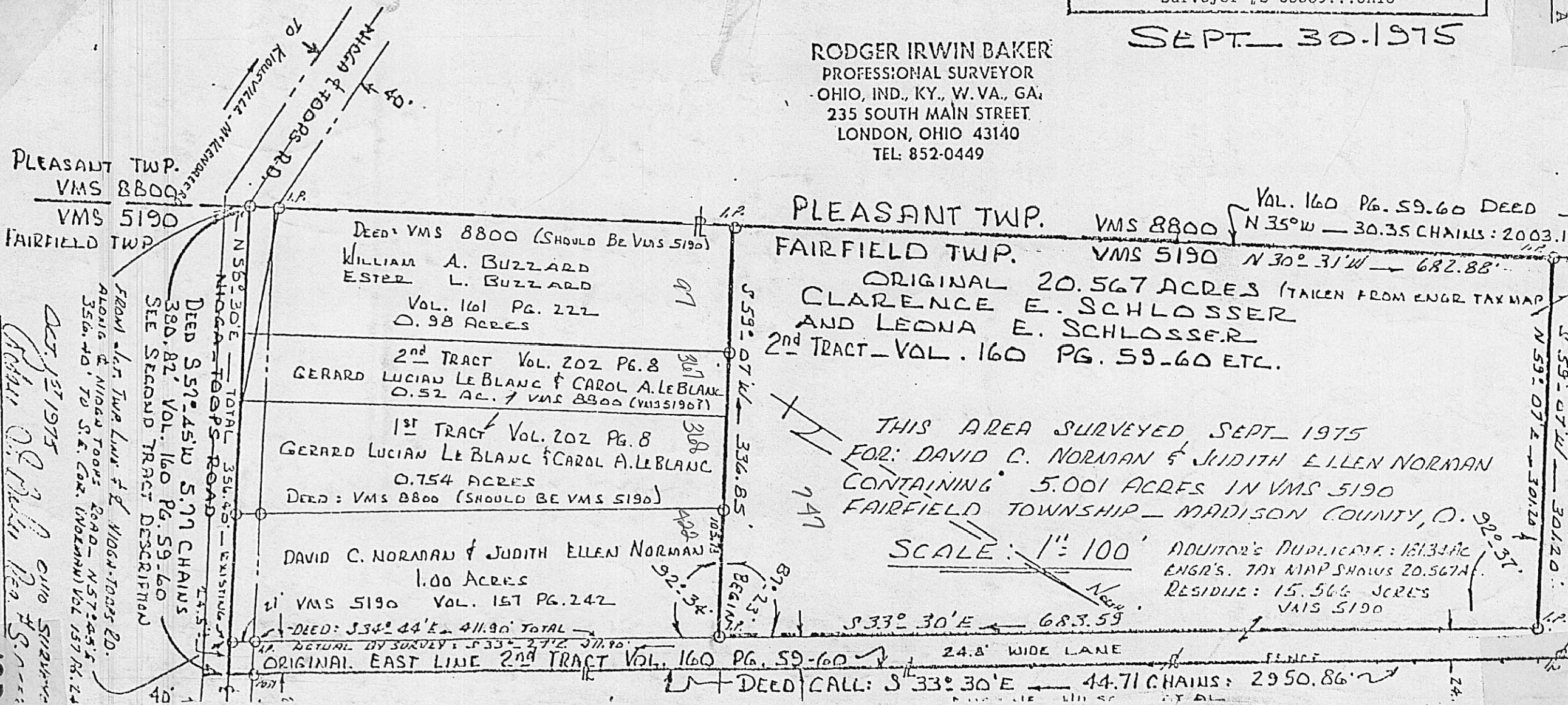


Rodger J. Baker
 Surveyor #3-05559...Ohio

SEPT. 30. 1975

RODGER IRWIN BAKER
 PROFESSIONAL SURVEYOR
 OHIO, IND., KY., W. VA., GA.
 235 SOUTH MAIN STREET
 LONDON, OHIO 43140
 TEL: 852-0449



PLEASANT TWP. VMS 8800 VAL. 160 PG. 59-60 DEED N 35° W — 30.35 CHAINS: 2003.1'
 FAIRFIELD TWP. VMS 5190 N 30° 31' W — 682.88'

ORIGINAL 20.567 ACRES (TAKEN FROM ENGR TAX MAP)
 CLARENCE E. SCHLOSSER
 AND LEDNA E. SCHLOSSER
 2ND TRACT - VOL. 160 PG. 59-60 ETC.

THIS AREA SURVEYED SEPT. 1975
 FOR: DAVID C. NORMAN & JUDITH ELLEN NORMAN
 CONTAINING 5.001 ACRES IN VMS 5190
 FAIRFIELD TOWNSHIP - MADISON COUNTY, O.

SCALE: 1" = 100'
 ADUTOR'S DUPLICATION: 161.33 AC
 ENGR'S. TAX MAP SHOWS 20.567 AC
 RESIDUE: 15.566 ACRES
 VMS 5190

DEED CALL: S 33° 30' E — 44.71 CHAINS: 2950.86'
 ORIGINAL EAST LINE 2ND TRACT VOL. 160 PG. 59-60
 DEED: 334° 44' E — 411.90' TOTAL
 ACTUAL BY SURVEY: S 33° 27' E — 377.90'

PLEASANT TWP. VMS 8800
 FAIRFIELD TWP. VMS 5190

FROM - 1st Tract Line of 11064-TOOPS RD.
 ALONG & 11064 TOOPS ROAD - N 57° 45' E
 356.40' TO S.E. COR. (NORMAN) VOL 157 PG. 24
 DEED 5.57° 45' W 5.77 CHAINS
 380.82' VOL. 160 PG. 59-60
 SEE SECOND TRACT DESCRIPTION
 OCT. 13 1975
 Rodger J. Baker
 Ohio Surveyor
 18B

IBIT A