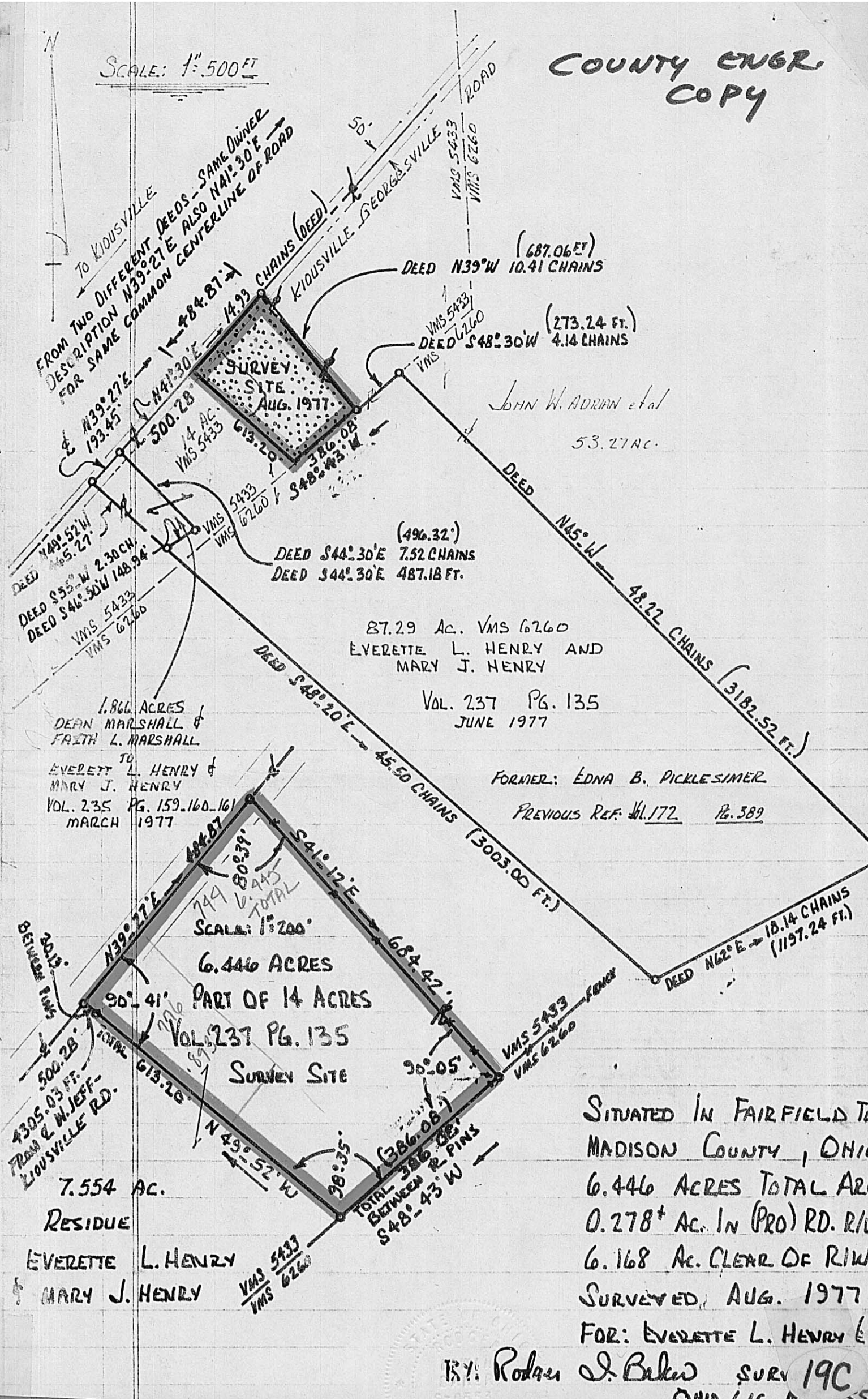


SCALE: 1" = 500 FT

COUNTY ENGR.
COPY



TO KIOUSVILLE
 FROM TWO DIFFERENT DEEDS - SAME OWNER
 DESCRIPTION N39°27'E ALSO N41°30'E
 FOR SAME COMMON CENTERLINE OF ROAD

DEED N49°52'W 145.27'
 DEED S55°W 2.30 CH.
 DEED S46°30'W 148.94'
 VMS 5423
 VMS 6260

1.866 ACRES
 DEAN MARSHALL &
 FAITH L. MARSHALL
 TO
 EVERETT L. HENRY &
 MARY J. HENRY
 VOL. 235 PG. 159-160-161
 MARCH 1977

(496.32°)
 DEED S44°30'E 7.52 CHAINS
 DEED S44°30'E 487.18 FT.

87.29 AC. VMS 6260
 EVERETTE L. HENRY AND
 MARY J. HENRY
 VOL. 237 PG. 135
 JUNE 1977

FORMER: EDNA B. PICKLESIMER
 PREVIOUS REF. Vol. 172 Pg. 589

SCALE: 1" = 200'
 6.446 ACRES
 PART OF 14 ACRES
 VOL. 237 PG. 135
 SURVEY SITE

3013'
 BETWEEN PINS
 4305.03 FT.
 ROAD & W. JEFF-
 LIOUSVILLE RD.
 TOTAL 613.28'

7.554 AC.
 RESIDUE
 EVERETTE L. HENRY
 & MARY J. HENRY
 VMS 5433
 VMS 6260

90°41'
 90°05'
 98°35'
 TOTAL 386.08'
 BETWEEN PINS
 S48°43'W

SITUATED IN FAIRFIELD TWP
 MADISON COUNTY, OHIO
 6.446 ACRES TOTAL ARE
 0.278+ AC. IN (PRO) RD. R/W
 6.168 AC. CLEAR OF R/W
 SURVEYED, AUG. 1977
 FOR: EVERETTE L. HENRY ET

BY: Rodan J. Baker SURV 19C