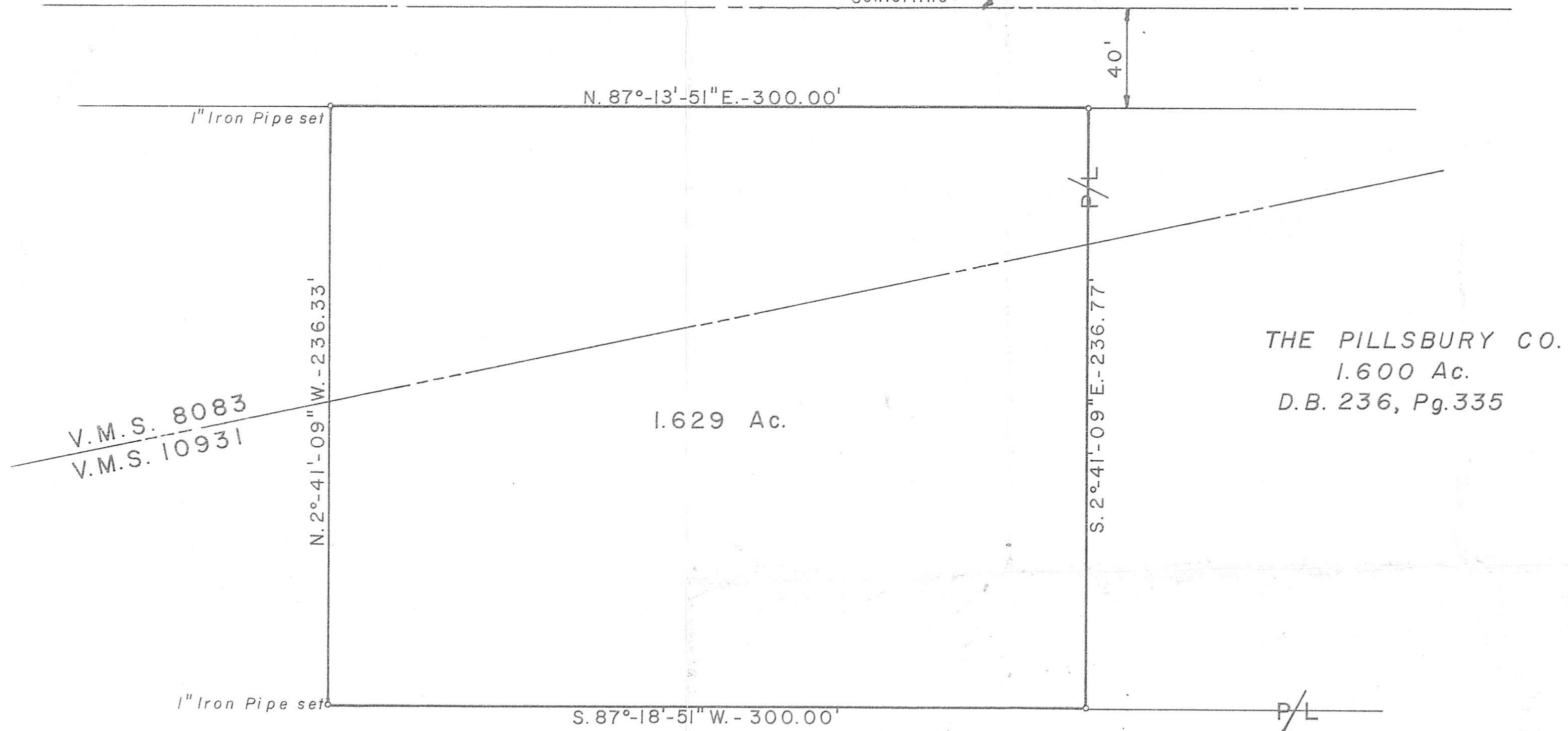


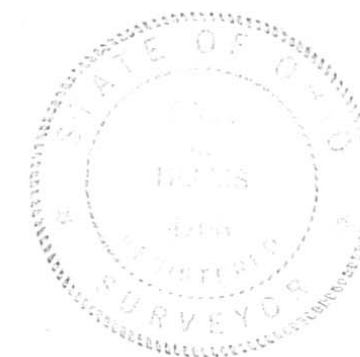
PENN - CENTRAL RAILROAD

Centerline

NORTH



GARY BELL
 Orig. 52.923 Ac.
 D.B. 236, Pg. 12



GALE L. HELMS & ASSOC., INC. Consulting Engineers & Surveyors 222 N. OAKLAND AVE. WASHINGTON C.H., OHIO	
SURVEY OF 1.629 ACRES V.M.S. 8083 & 10931 FAIRFIELD TOWNSHIP MADISON COUNTY, OHIO	
SEPT. 26, 1978	SCALE: 1" = 40'

Gale L. Helms

GALE L. HELMS, Reg. Surveyor #4706