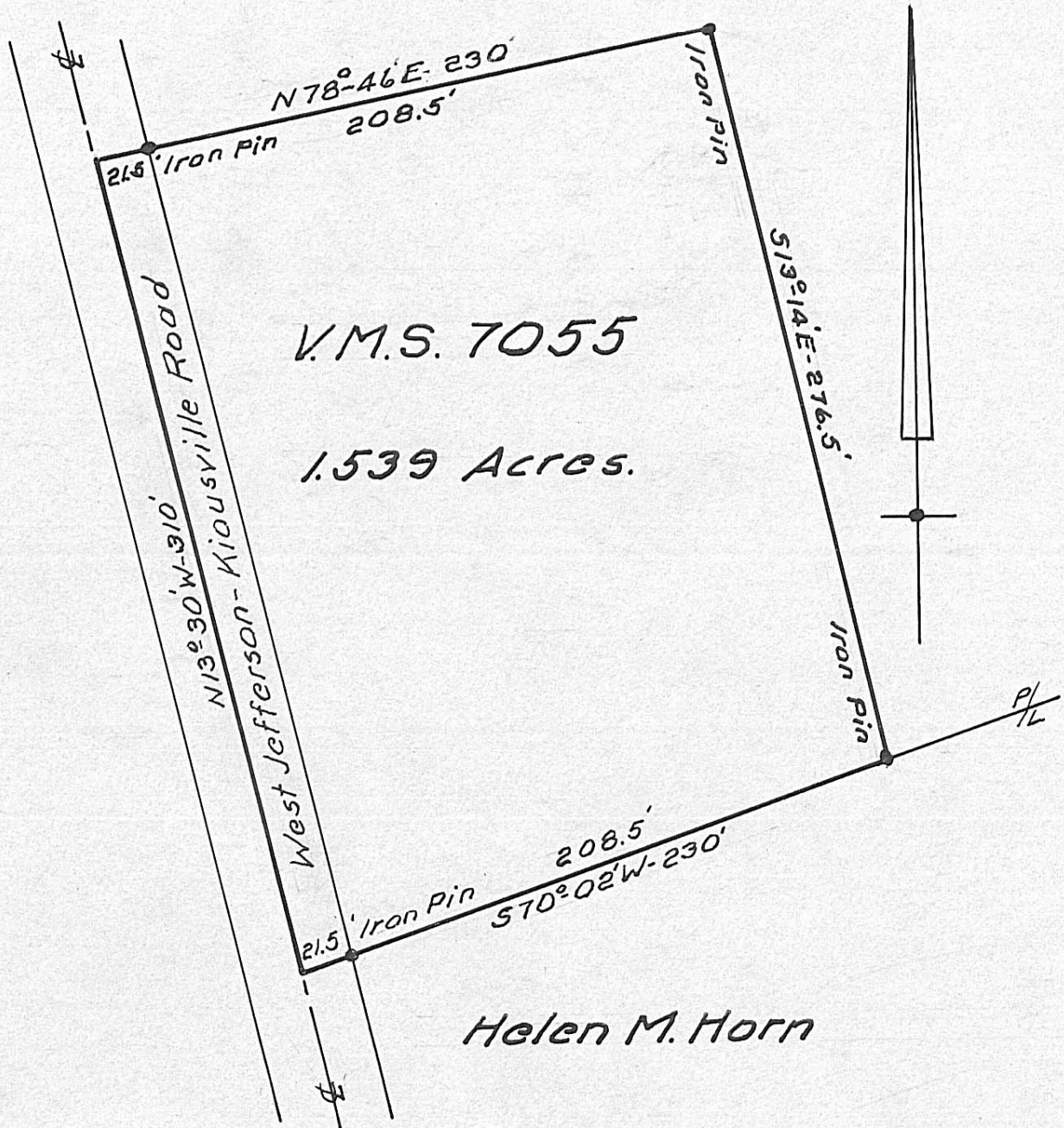


Edward Phillip Sidner



V.M.S. 7055

1.539 Acres.

Helen M. Horn

Parcel of land located in
Fairfield Tp., Madison Co., O.,
surveyed for Edw. E. Killeen.
1956.

Scale 1"=60'

Hely E. Ekedahl
Registered Engineer No. 5851.
by G. J. Clark, Deputy