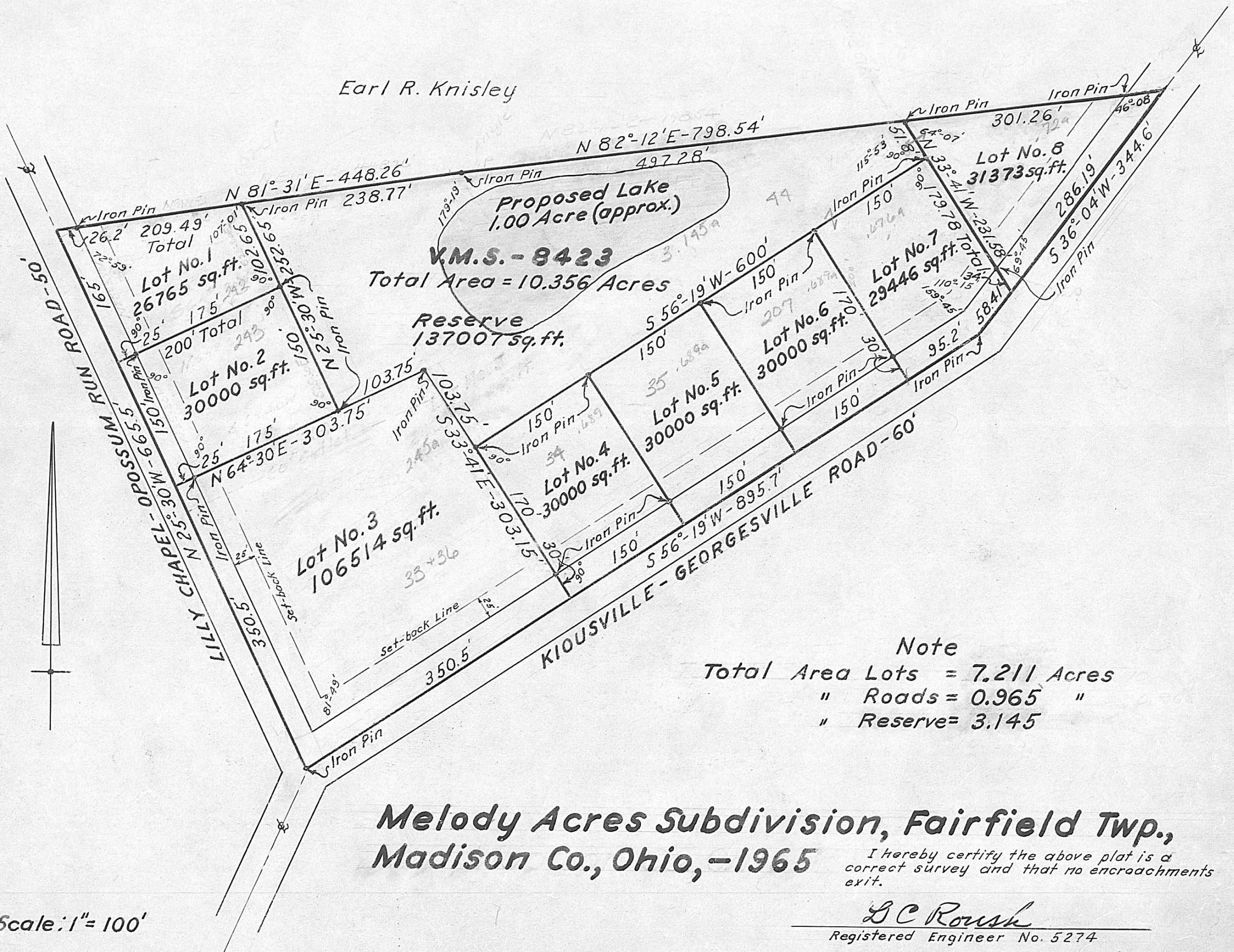


Earl R. Knisley



V.M.S. - 8423
 Total Area = 10.356 Acres

Reserve
 137007 sq. ft.

Proposed Lake
 1.00 Acre (approx.)

Lot No. 1
 26765 sq. ft.

Lot No. 2
 30000 sq. ft.

Lot No. 3
 106514 sq. ft.

Lot No. 4
 30000 sq. ft.

Lot No. 5
 30000 sq. ft.

Lot No. 6
 30000 sq. ft.

Lot No. 7
 29446 sq. ft.

Lot No. 8
 31373 sq. ft.

Note
 Total Area Lots = 7.211 Acres
 " Roads = 0.965 "
 " Reserve = 3.145

**Melody Acres Subdivision, Fairfield Twp.,
 Madison Co., Ohio, -1965**

I hereby certify the above plat is a correct survey and that no encroachments exist.

D.C. Roush

Registered Engineer No. 5274

Scale: 1" = 100'