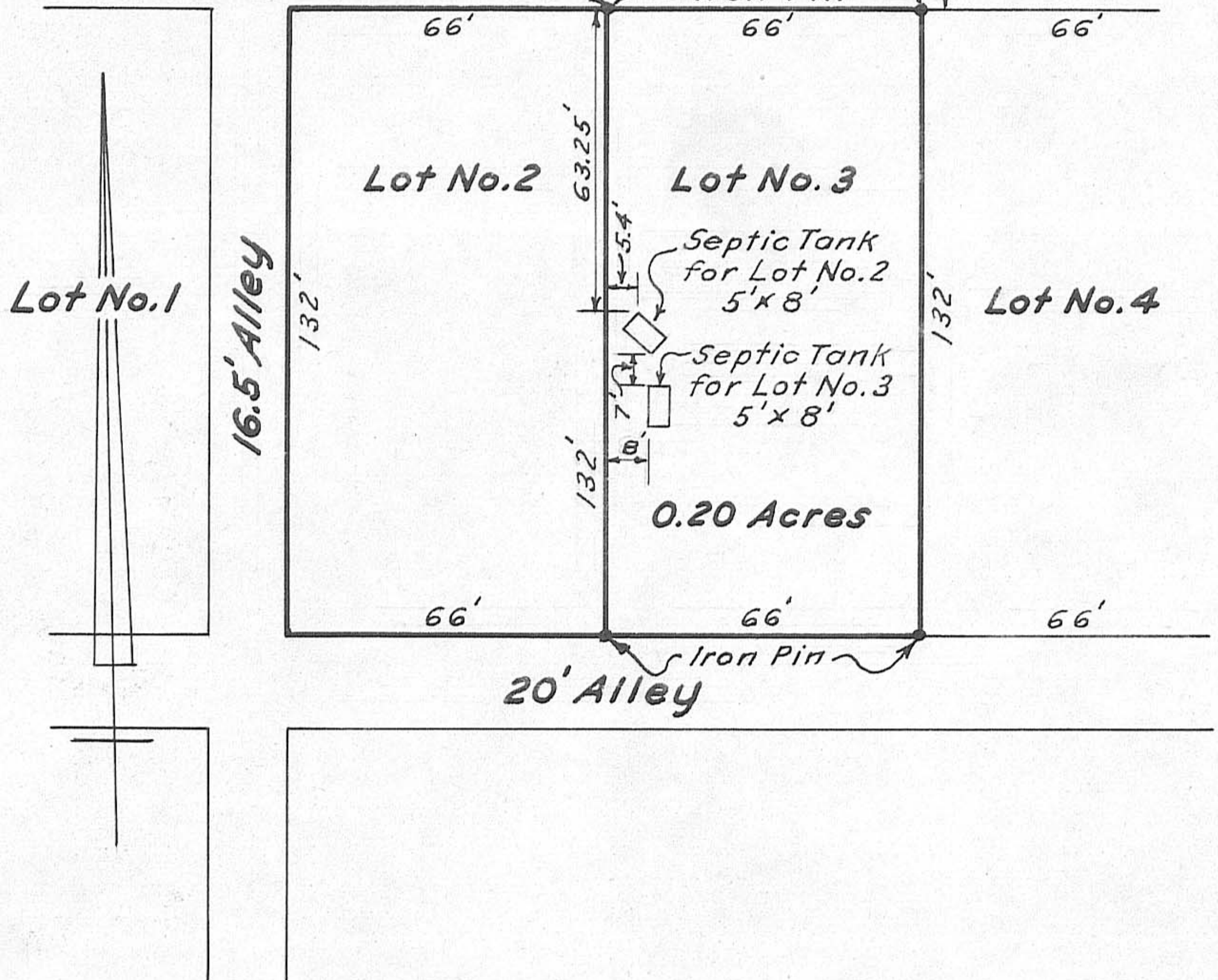


LONDON-GEORGESVILLE ROAD - 66'

Iron Pin Bears $S 89^{\circ} E - 229.25'$
from Iron Pin, corner to London-Georgesville
Road & Lilly Chapel-Georgesville Road



**Survey of Lot No.3-Commeans Addition to
Lilly Chapel in Fairfield Twp., Madison Co.,
Ohio, made for Marian R. Herren - 1965**

Scale: 1" = 40'

LC Roush
Registered Engineer No. 5274