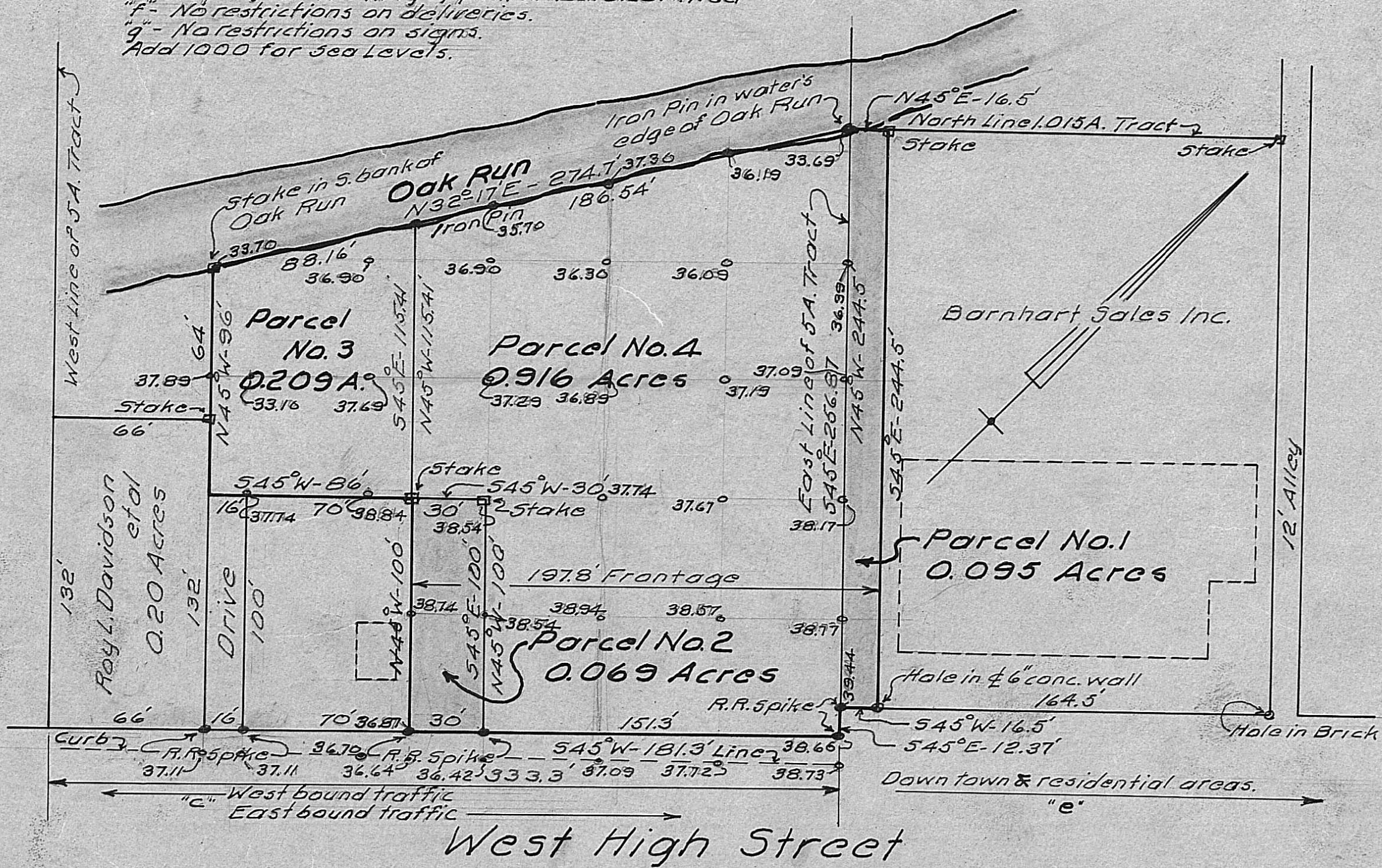


Notes:

- "a" - No pvmt. except street, 12' alley and parking space at front of Sales Bldg.
 - "d" - Stop sign at R.R. Xing opposite W. cor. 0.20 A. Tract
 - "f" - No restrictions on deliveries.
 - "g" - No restrictions on signs.
- Add 1000 for sea Levels.



Survey of four Parcels of land
in London, Ohio, made for
Corwin A. Barnhart - 1956.

Scale 1" = 50'

John H. Keddah
Registered Engineer No. 5851