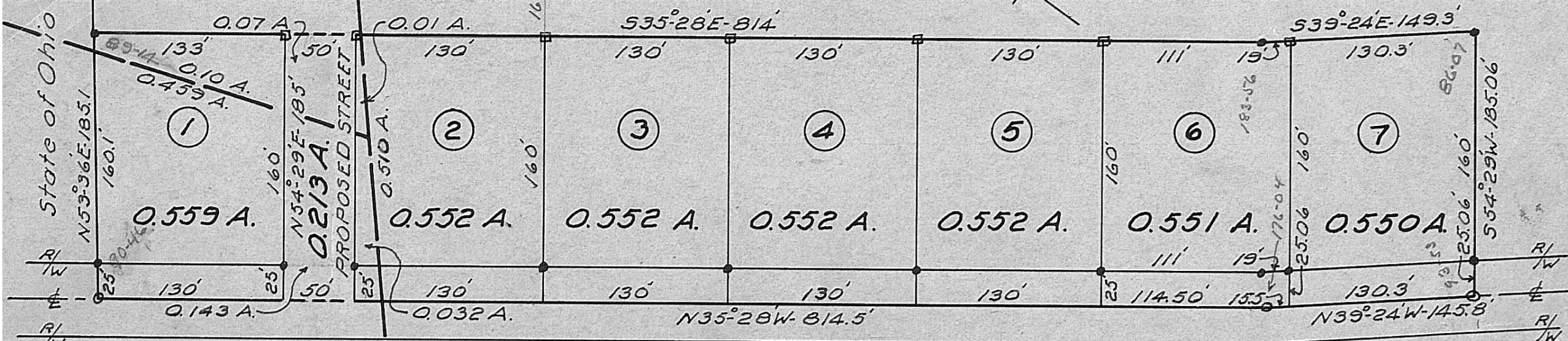


Dustin L. Mirick et al

V.M.S. - 9473
0.674 A.

1.151 ACRES V.M.S. - 5897
0.477 A.

Number of Parcel appears in Circle.
Iron Pins at points marked thus ●
Stakes " " " " □



V.M.S. - 8864

State Route 56

Subdivision of 4.081 Acres in Union Township,
Madison County, Ohio, surveyed for
Dustin L. Mirick et al - 1957.

Scale 1"=80'

Volger A. Schudde
Registered Engineer No. 5851.