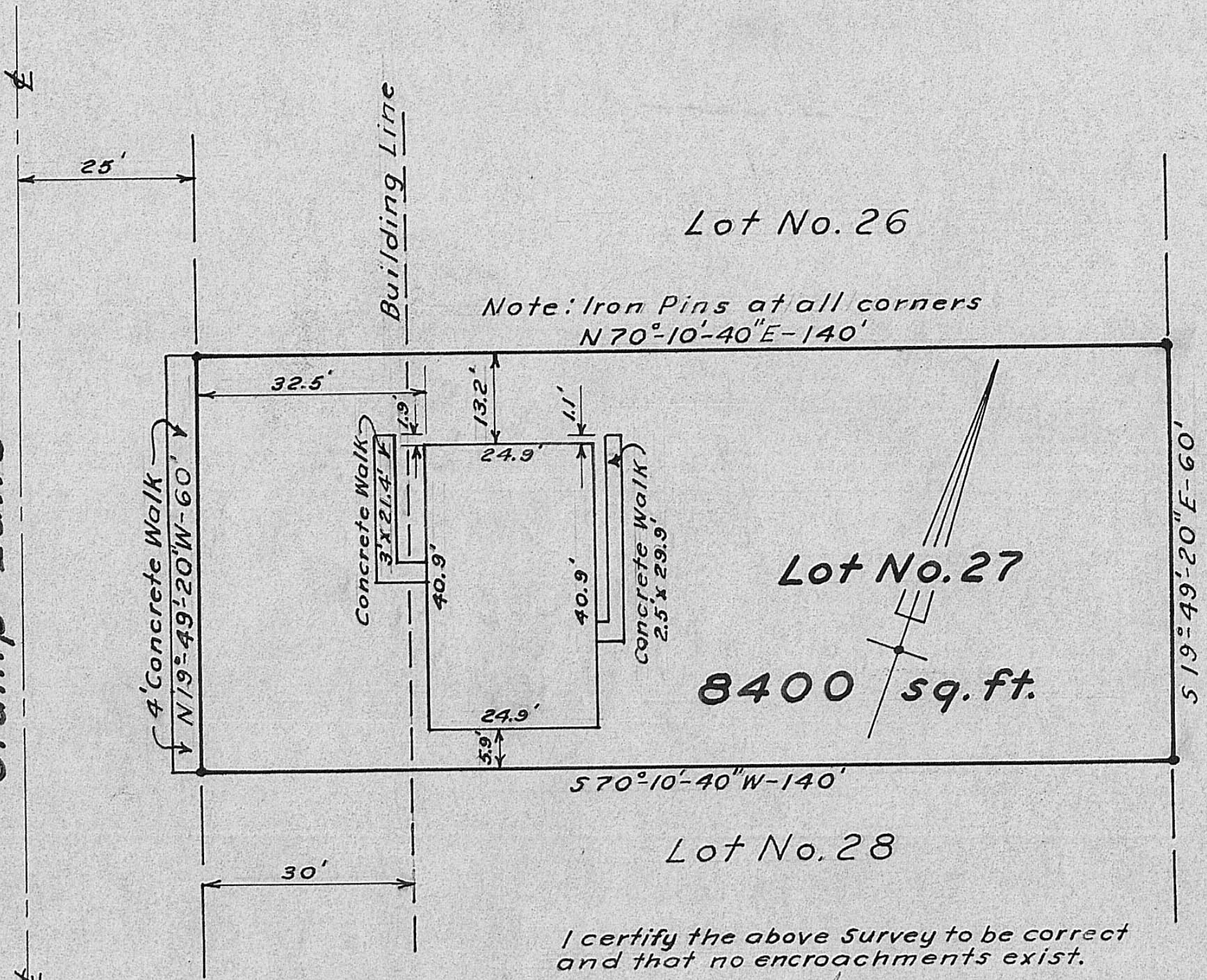


Stump Lane



I certify the above survey to be correct and that no encroachments exist.

*Harold A. K... ..*  
Registered Engineer No. 5851  
August 14, 1959

**Lot No. 27**  
**London Terrace Subdivision**  
**City of London, Ohio,**  
**made for W. H. Grubbs.**

Scale 1" = 20'