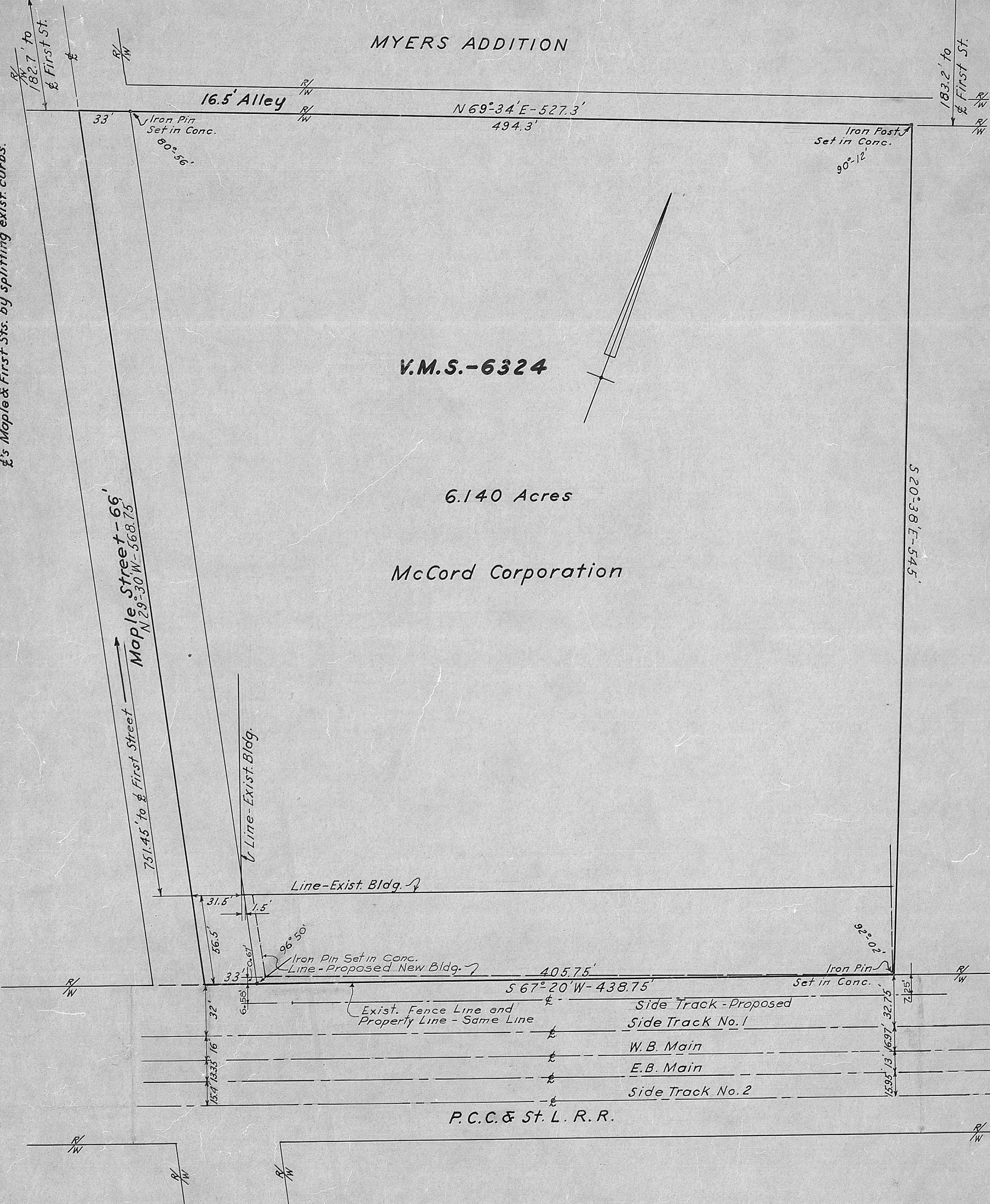


MYERS ADDITION

Note: Iron Pin set at intersection of Maple & First Sts. by splitting exist. curbs.



V.M.S.-6324

6.140 Acres

McCord Corporation



Survey of 6.140 Acres of land, location of Railroad Tracts and required data for P.C.C. & St. L. R.R., made for McCord Corporation - 1964

Scale: 1" = 40'

I certify the above survey to be correct L.C. Roush Registered Engineer No. 5274