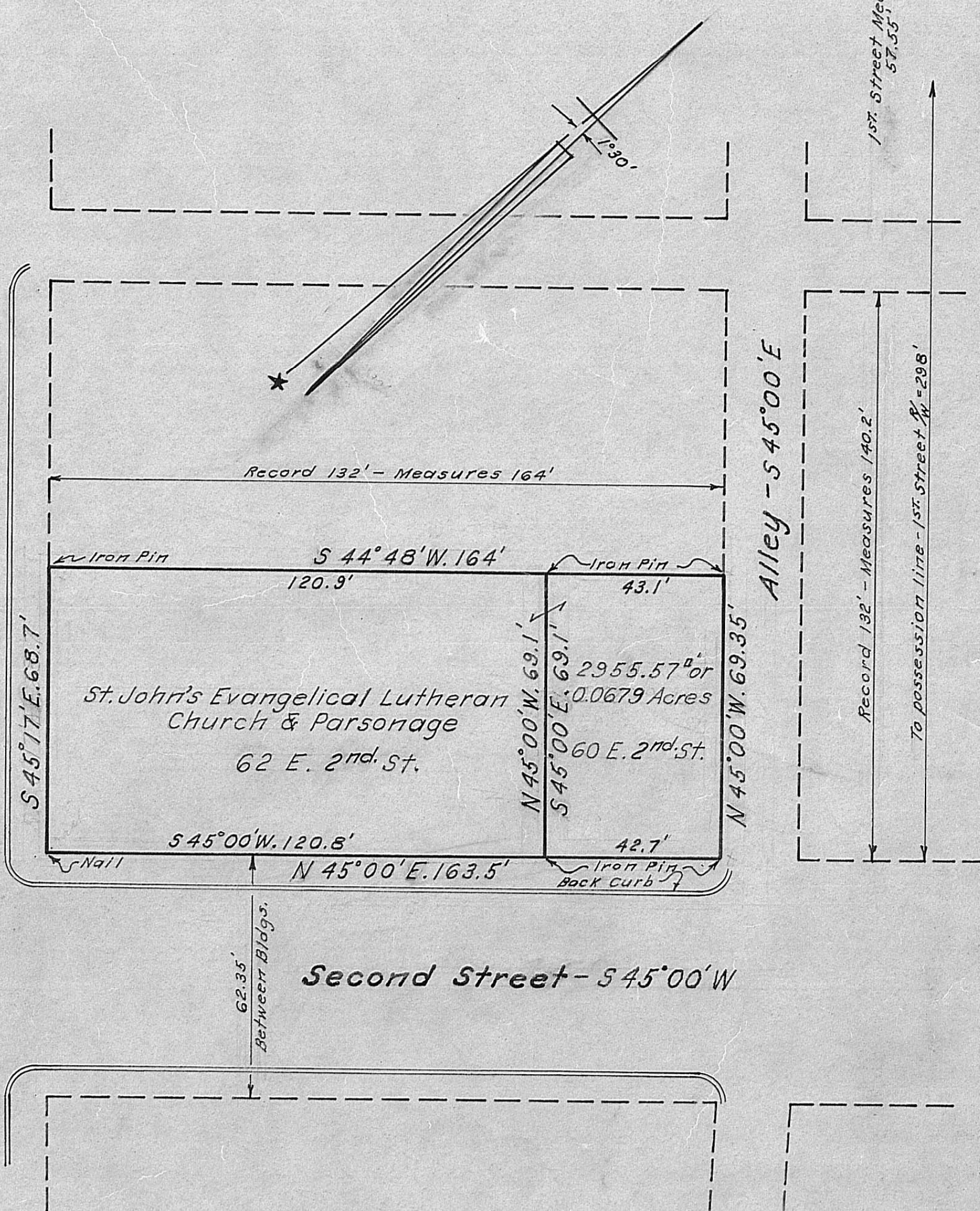


Walnut Street - N 45° 17' E.



**"St. John's Evangelical Lutheran Church"**  
 Survey of land situated on 2<sup>nd</sup>. & Walnut Streets,  
 London, Ohio, - requested by George Wickline  
 Apr., 1968

392

Scale: 1" = 30'

L.C. Roush  
Registered Engineer No. 5274