

THIS PLAT HAS BEEN PREPARED FROM AN ACTUAL SURVEY MADE BY ME — IT CONTAINS 0.11456 AC. COMMONLY KNOWN AS 212 S. OAK. LONDON — VMS — 8863 — OHIO

BAKER — MCGEE — MANCINI  
Rodger Drum Baker  
 OHIO LICENSE S-05539



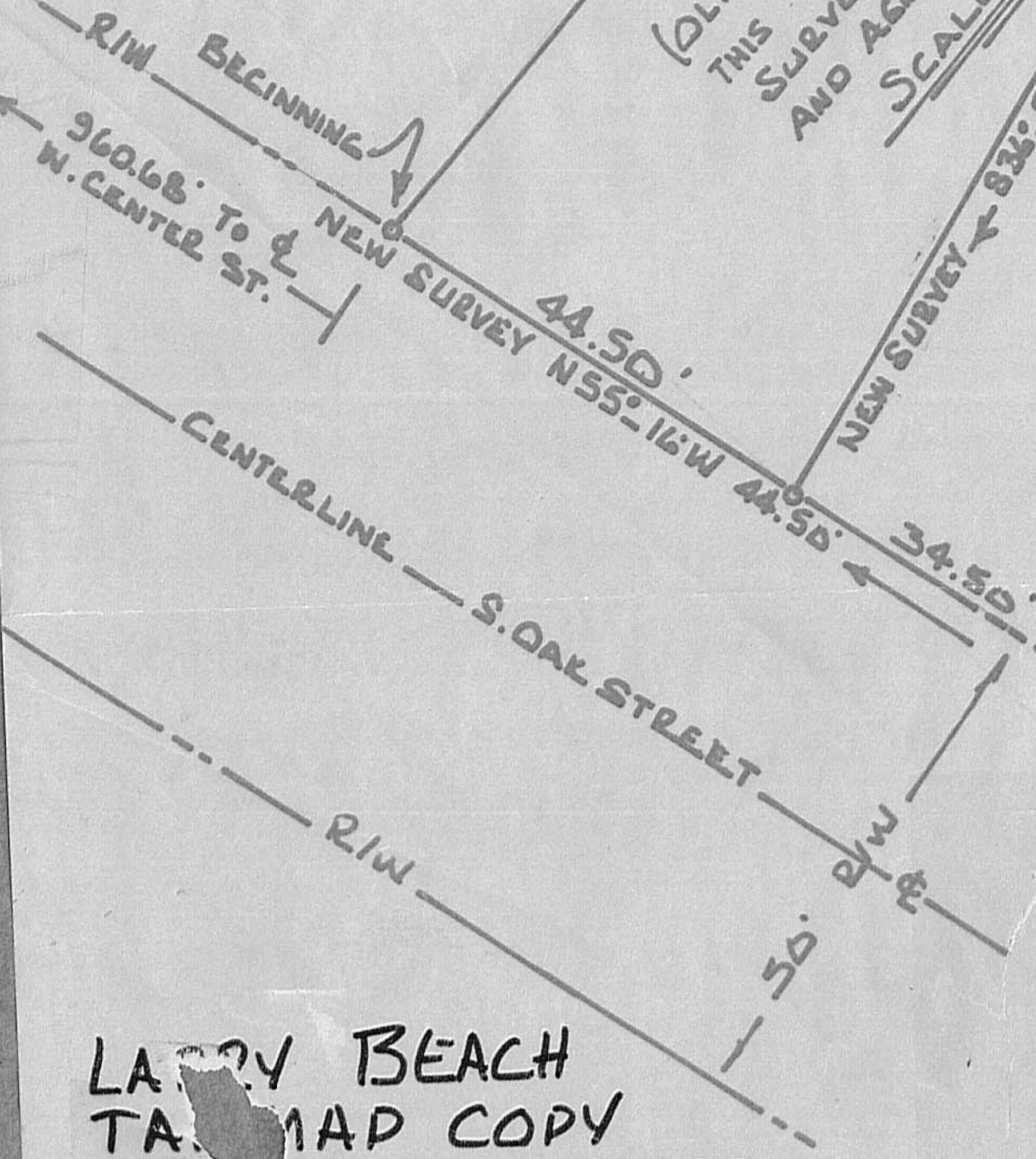
JAM LANDES — VACANT LOT

NEW SURVEY N 43° 26' E 134.30'  
 (OLD SAM LANDES TO JACK RAUB PG 95)  
 THIS PARCEL CONTAINS 0.11456 ACRES.  
 SURVEYED MAY 1970 BY REQUEST  
 AND AGREEMENT BETWEEN OWNERS  
 SCALE: 1" = 20 FEET

SAM LANDES (RESIDENCE)  
 214 SOUTH OAK ST.

ALLEY LINE  
 (PUBLIC USE)

APPROX. NORTH



LARRY BEACH  
TAMMAD COPY

SKETCH OF NEW SURVEY. MAY 1970  
 PINS SET ALL CORNERS — AS SHOWN  
 SURVEY FOR TOM BUENLER ET AL  
 212 SOUTH OAK ST. LONDON, O.  
 SCALE: 1" = 20'

41B