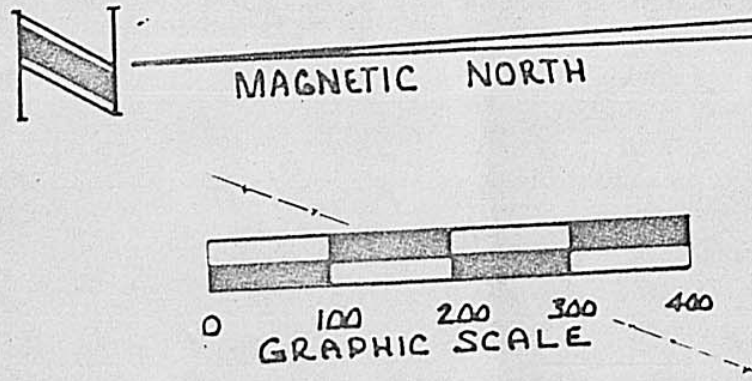


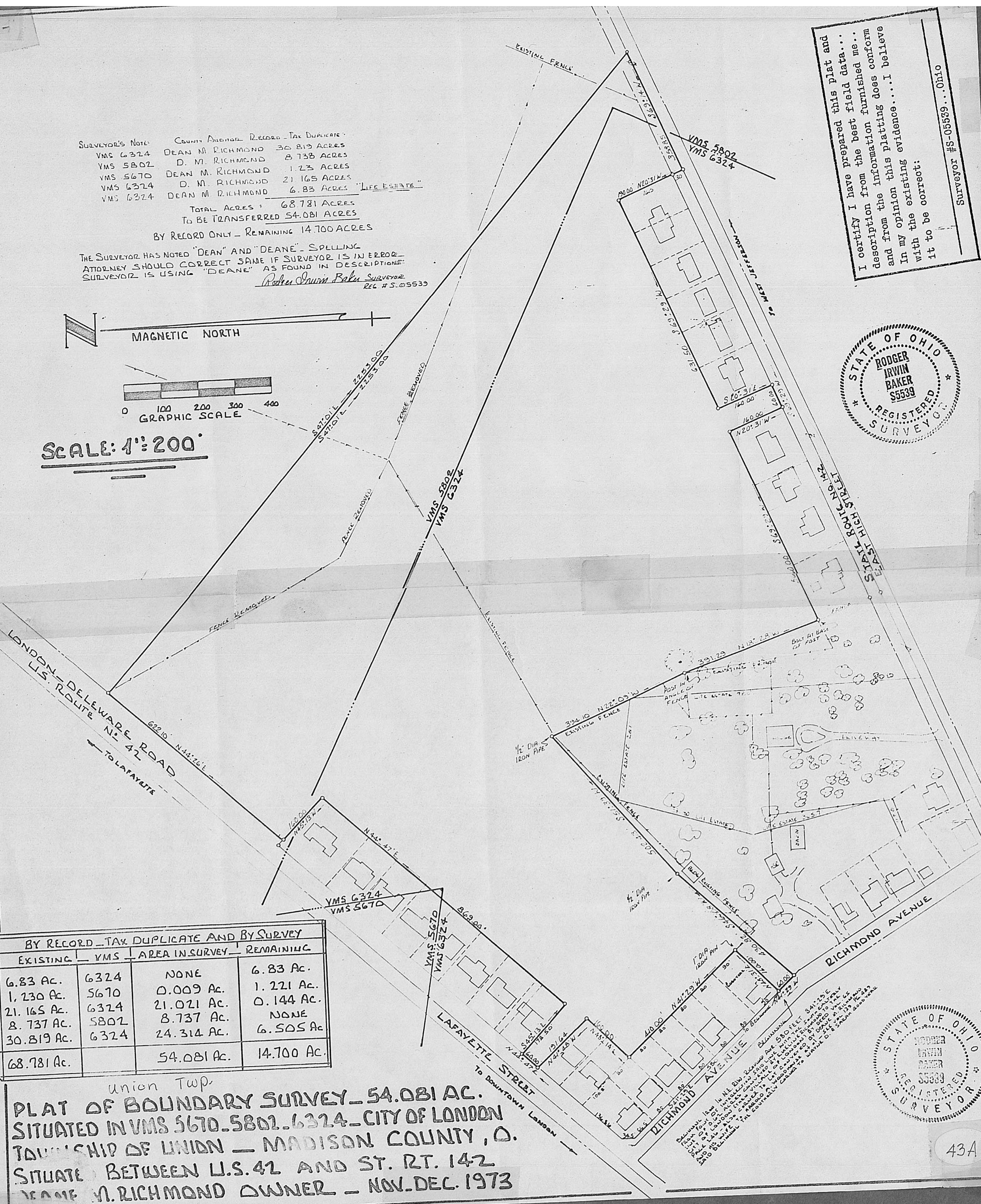
SURVEYOR'S NOTE: COUNTY AUNTOR RECORD - TAX DUPLICATE -  
 VMS 6324 DEAN M. RICHMOND 30.819 ACRES  
 VMS 5802 D. M. RICHMOND 8.738 ACRES  
 VMS 5670 DEAN M. RICHMOND 1.23 ACRES  
 VMS 6324 D. M. RICHMOND 21.165 ACRES  
 VMS 6324 DEAN M. RICHMOND 6.83 ACRES "LIFE ESTATE"  
 TOTAL ACRES: 68.781 ACRES  
 TO BE TRANSFERRED 54.081 ACRES  
 BY RECORD ONLY - REMAINING 14.700 ACRES

THE SURVEYOR HAS NOTED "DEAN" AND "DEANE" - SPELLING  
 ATTORNEY SHOULD CORRECT SAME IF SURVEYOR IS IN ERROR -  
 SURVEYOR IS USING "DEANE" AS FOUND IN DESCRIPTIONS  
 Roger Irwin Baker Surveyor  
 REC # S. 05539

I certify I have prepared this plat and description from the best field data... and from the information furnished me... In my opinion this platting does conform with the existing evidence... I believe it to be correct:  
 Surveyor #S-05539...Ohio



SCALE: 1" = 200'



BY RECORD - TAX DUPLICATE AND BY SURVEY			
EXISTING	VMS	AREA IN SURVEY	REMAINING
6.83 Ac.	6324	NONE	6.83 Ac.
1.230 Ac.	5670	0.009 Ac.	1.221 Ac.
21.165 Ac.	6324	21.021 Ac.	0.144 Ac.
8.737 Ac.	5802	8.737 Ac.	NONE
30.819 Ac.	6324	24.314 Ac.	6.505 Ac.
68.781 Ac.		54.081 Ac.	14.700 Ac.

Union Twp.  
 PLAT OF BOUNDARY SURVEY - 54.081 AC.  
 SITUATED IN VMS 5670, 5802, 6324 - CITY OF LONDON  
 TOWNSHIP OF UNION - MADISON COUNTY, O.  
 SITUATE BETWEEN U.S. 42 AND ST. RT. 142  
 DEANE M. RICHMOND OWNER - NOV. DEC. 1973

