

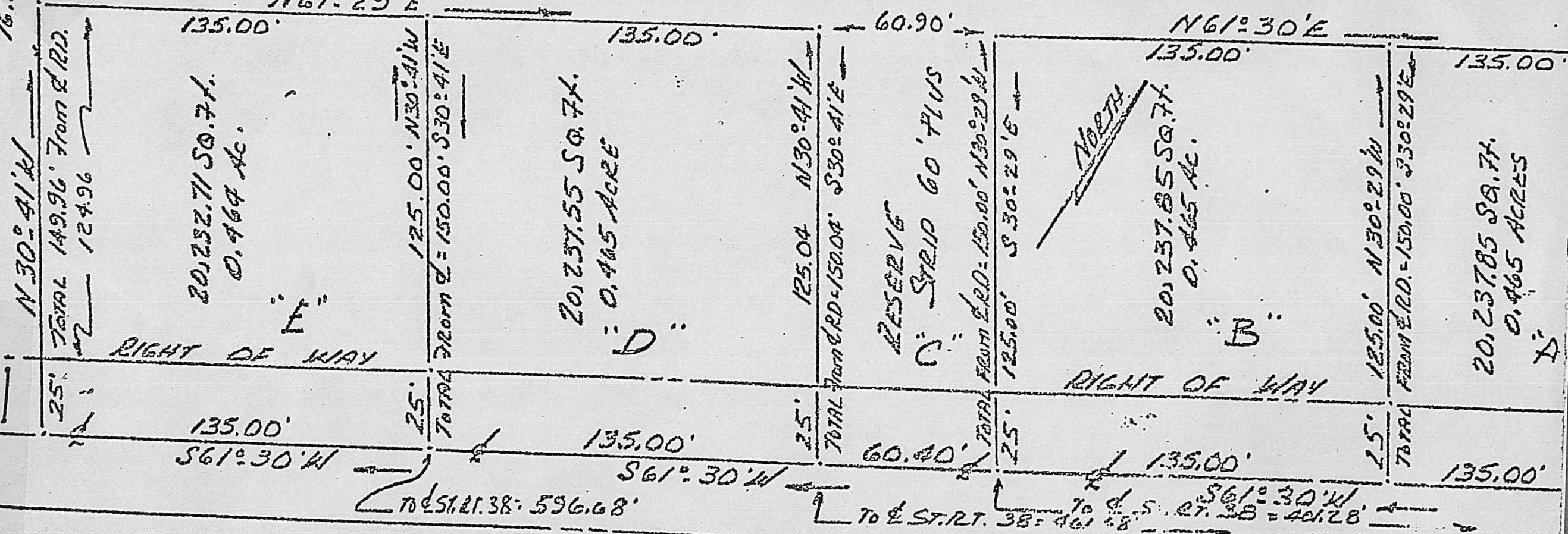
16.114 ACRES

ELTON & DOROTHY LEWIS

IRON PIPE ON ALL CORNERS

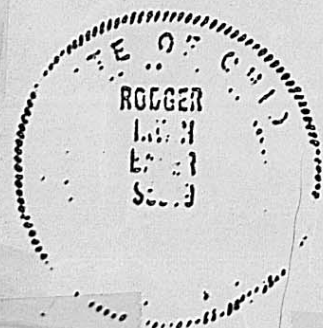
SCALE: 1" = 40'

SURVEYED FEB 1974



Union

GARFIELD AVENUE



I certify I have prepared this plat and description from the best field data... and from the information furnished me... In my opinion this platting does conform with the existing evidence... I believe it to be correct:  
*Robert L. H. Smith*  
 Surveyor #S-05539... Ohio

43C  
 PLOT @ 1" = 40' SCALE - 3 PARCELS  
 YMS 8886 CITY OF LONDON - OHIO  
 FRONTING ON GARFIELD AVE -  
 MADISON COUNTY - OHIO  
 PART OF 4.862 ACRES OF LAND  
 BELONGING TO ELTON & DOROTHY LEWIS