

ELM ST. - OHIO RT. 38 - 60'

SPIKE N 14° 00' 30" W 354.78' P.K. NAIL

PROP. 15' SAN. SEWER EASE.

ADVISORY BOARD, NORTHWESTERN OHIO DISTRICT, CHURCH OF THE NAZARENE

1.226 AC.

D. B. 158, P. 516

PROP. 25' INGRESS & EGRESS EASE.

PROP. 12' WATER MAIN EASE.

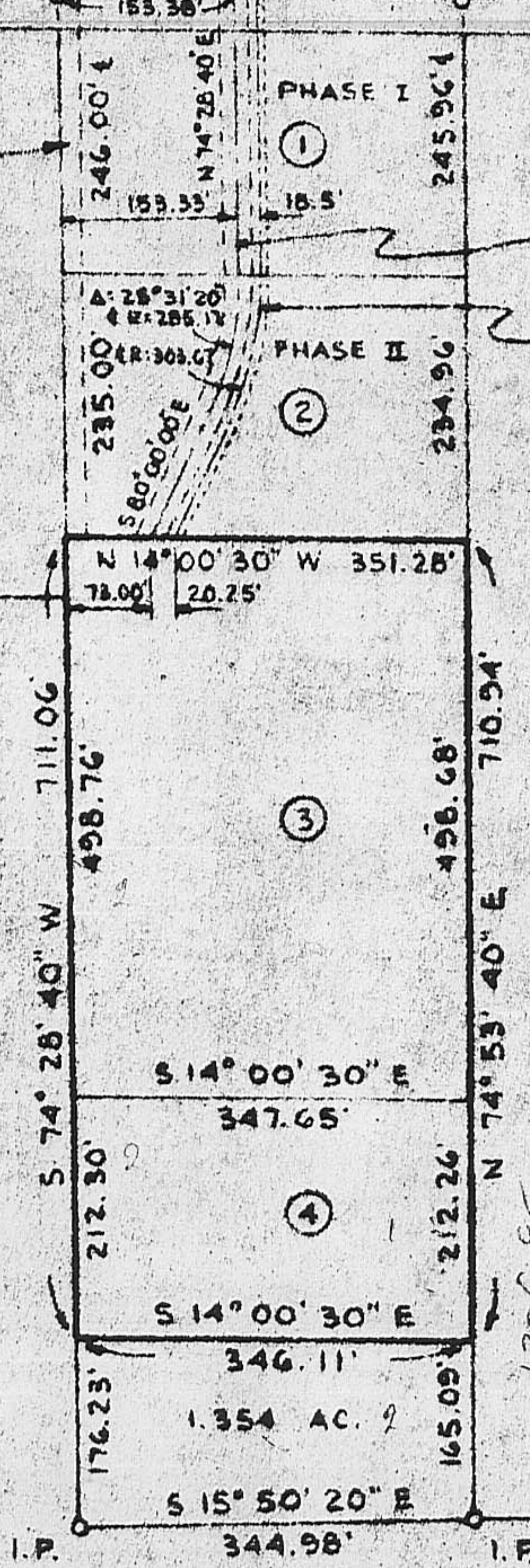
① FOUR-IN-ONE
1.998 AC.
D. B. 204, P. 349

② FOUR-IN-ONE
1.899 AC. - PARCEL I
D. B. 217, P. 98

③ FOUR-IN-ONE
4.000 AC. - PARCEL II
D. B. 217, P. 98

④ GEO. R. & JOHN K. BRIDGMAN
1.690 AC. - PART OF 81.5 AC.
D. B. 149, P. 344

THE MOST REVEREND EDWARD J. HERRMANN, BISHOP OF COLUMBUS
12.398 AC.
D. B. 217, P. 291



PLAT OF SURREY SQUARE - PHASE III, LONDON, OHIO
5.690 ACRES IN V.M.S. 8886

FOR FOUR-IN-ONE, A PARTNERSHIP

SCALE: 1" = 200'

JULY 23, 1976

C. F. BIRD & R. J. BULL, LTD.
6113 LINWORTH RD.
WORTHINGTON, OHIO

Richard J. Bull

45B

SV-6453