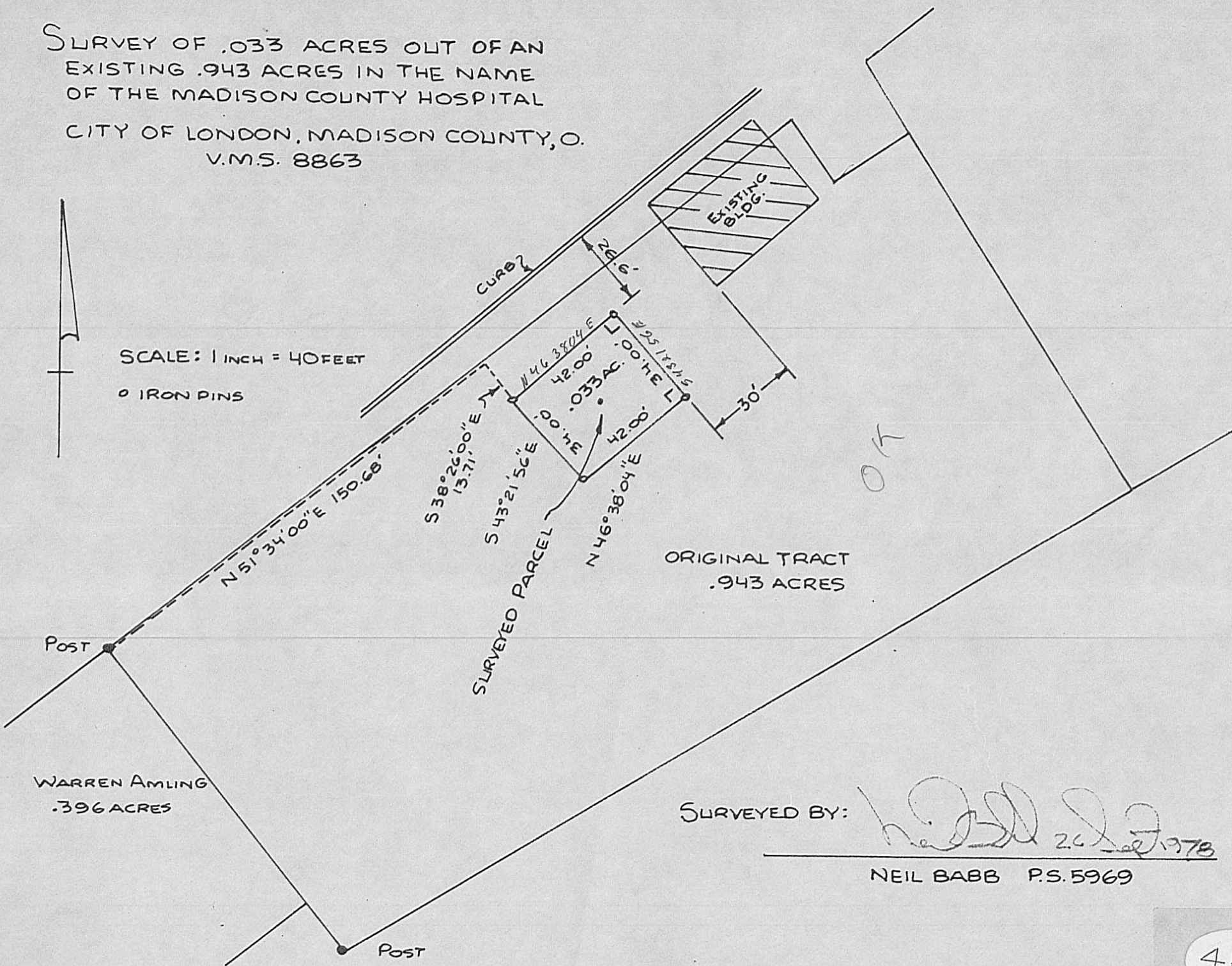


SURVEY OF .033 ACRES OUT OF AN
 EXISTING .943 ACRES IN THE NAME
 OF THE MADISON COUNTY HOSPITAL
 CITY OF LONDON, MADISON COUNTY, O.
 V.M.S. 8863

SCALE: 1 INCH = 40 FEET

○ IRON PINS



SURVEYED BY:

Neil Babb 26 2 1978

NEIL BABB P.S. 5969