

.277 AC. PAUL SANDERS
DEED BOOK 233, PG. 147

S 78° 13' 00" E 117.70'
TO C. OF EAST LINCOLN
AVE. & RAILROAD SPIKE
THENCE N 24° 58' 00" E 118.35'
TO C. OF EAST CENTER ST.
AND A RAILROAD SPIKE

.0002 AC.
6.55 SQ. FT.

RUSSEL E. & ELWANDA J.
WOOD

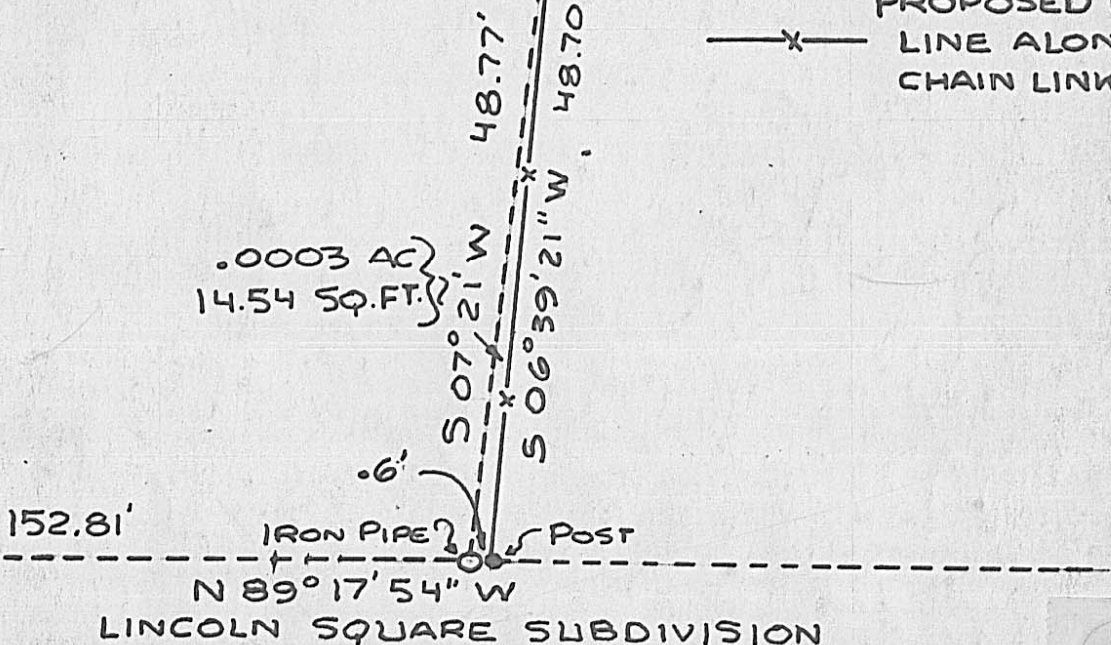
.292 AC. DEED BK 239
PG. 7

SCALE: 1" = 10'

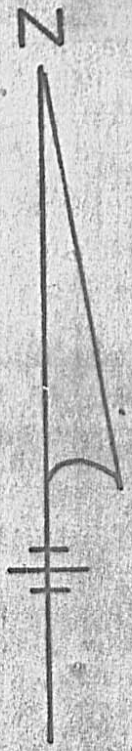
.248 AC.

----- ORIGINAL PROP. LINE
— x — PROPOSED PROP. LINE ALONG EXIST. CHAIN LINK FENCE

.0003 AC.
14.54 SQ. FT.



LINCOLN SQUARE SUBDIVISION



DRAWN BY: *MB*

SIGNED: *[Signature]* 10/1/79

PS. 5969

BABB ENGINEERING & SURVEYING
P.O. BOX 374, LONDON, OHIO 43140

51D