



V. M. S. No. 8863
Maud & Mary Minter
 2.41 Acres.
 South Parcel
 Vol. 144 p. 389

0.24 Acres.
 Vol. 144 p. 388

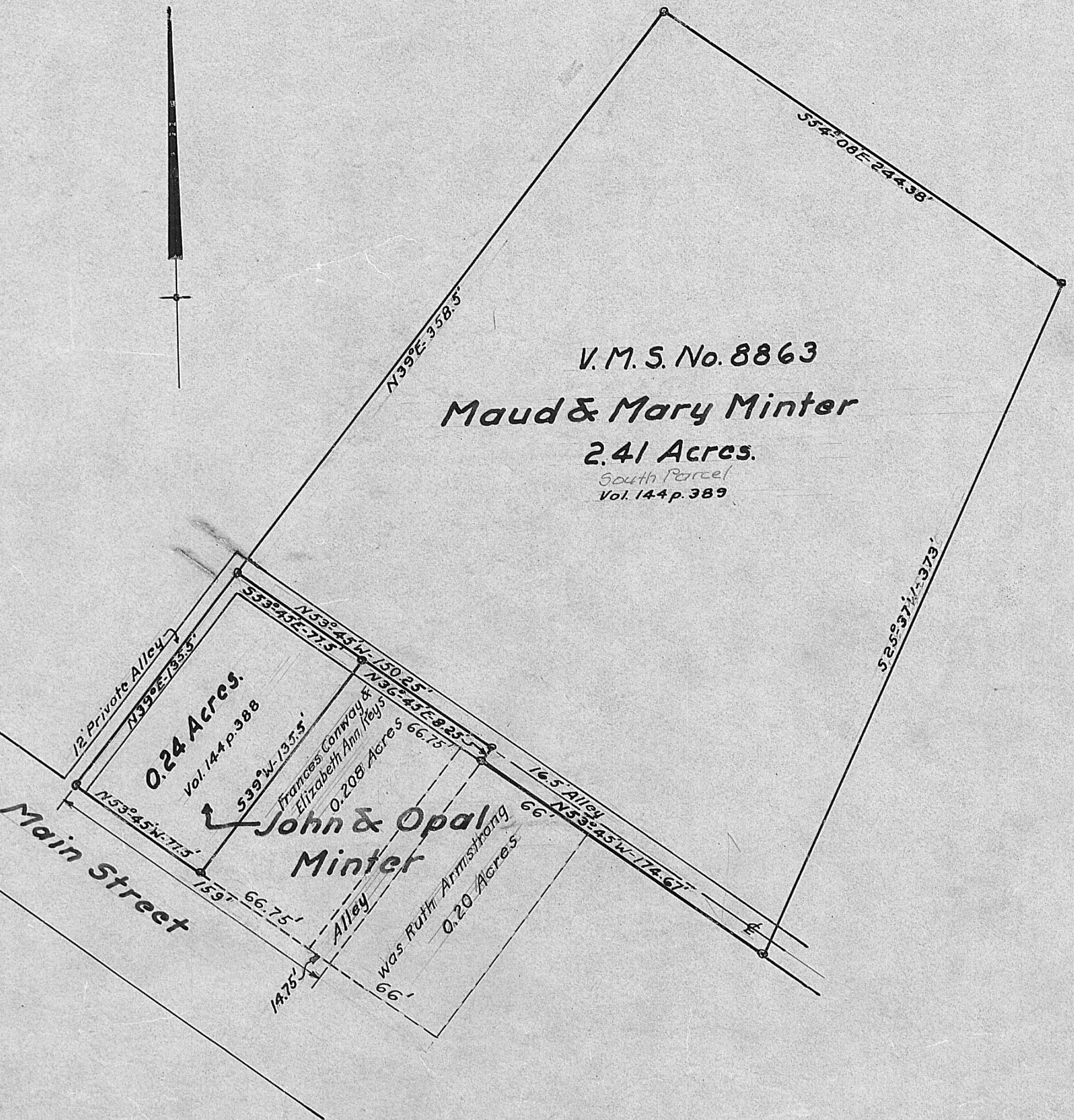
John & Opal Minter

Frances Conway &
 Elizabeth Ann Keys
 0.208 Acres

was Ruth Armstrong
 0.20 Acres

Main Street

12' Private Alley



**PLAT OF TWO PARCELS OF LAND IN
 THE CITY OF LONDON, OHIO. — 1953.**

J. Selge H. Bekedahl
 Registered Engineer.

Scale - 1" = 50'