

Notes:

All streets 50' wide.

Pavement 26' plus 4' curbs.

Curbs, gutters & sidewalks to be installed.

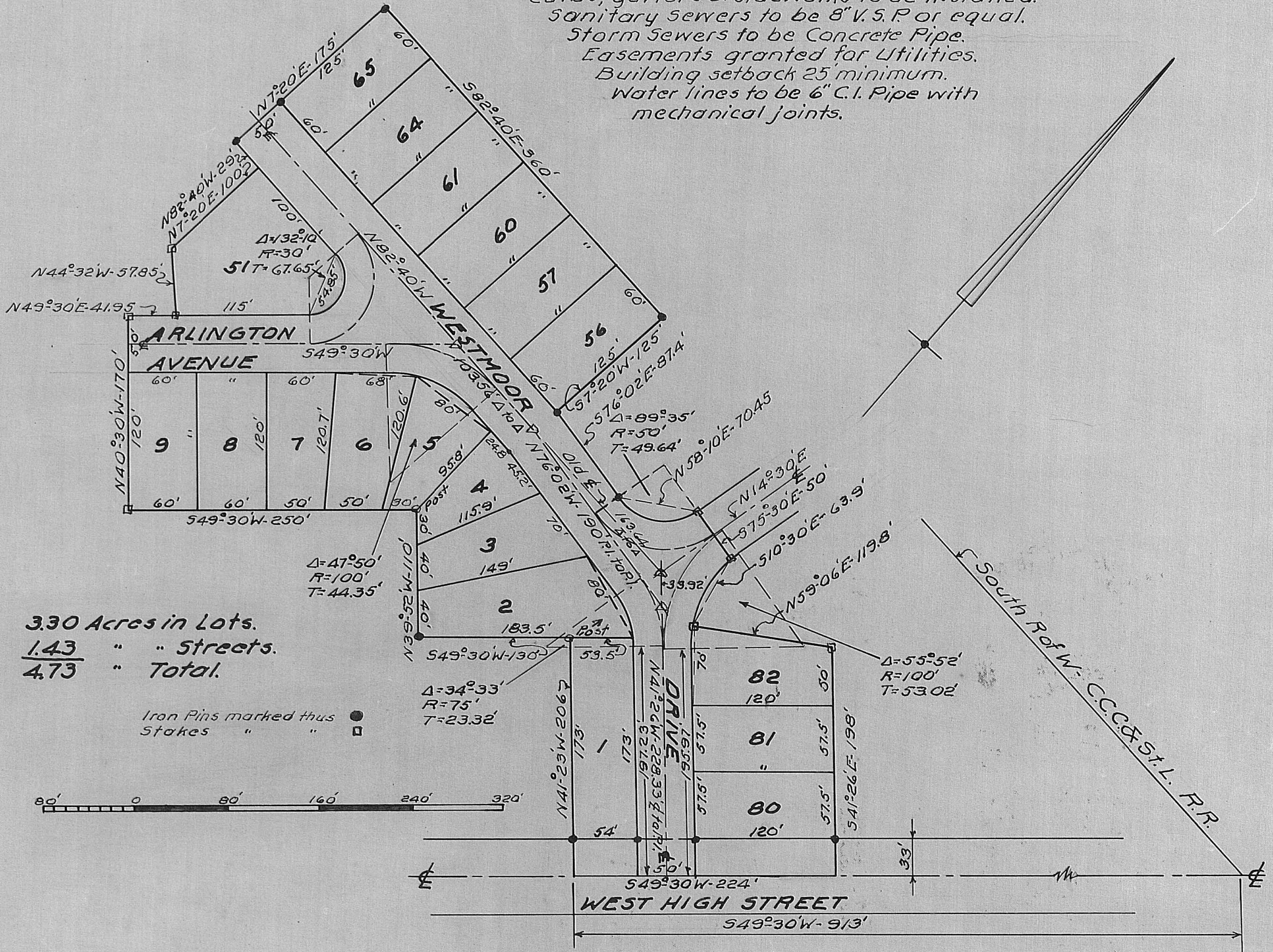
Sanitary sewers to be 8" V.S.P. or equal.

Storm Sewers to be Concrete Pipe.

Easements granted for Utilities.

Building setback 25' minimum.

Water lines to be 6" C.I. Pipe with
mechanical joints.



WESTMOOR SUBDIVISION No. 1
TO THE CITY OF LONDON, OHIO.
DEVELOPED BY G. HAROLD FLAX - 1954-5.

Halcyon Schuchert
Registered Engineer No. 5851.