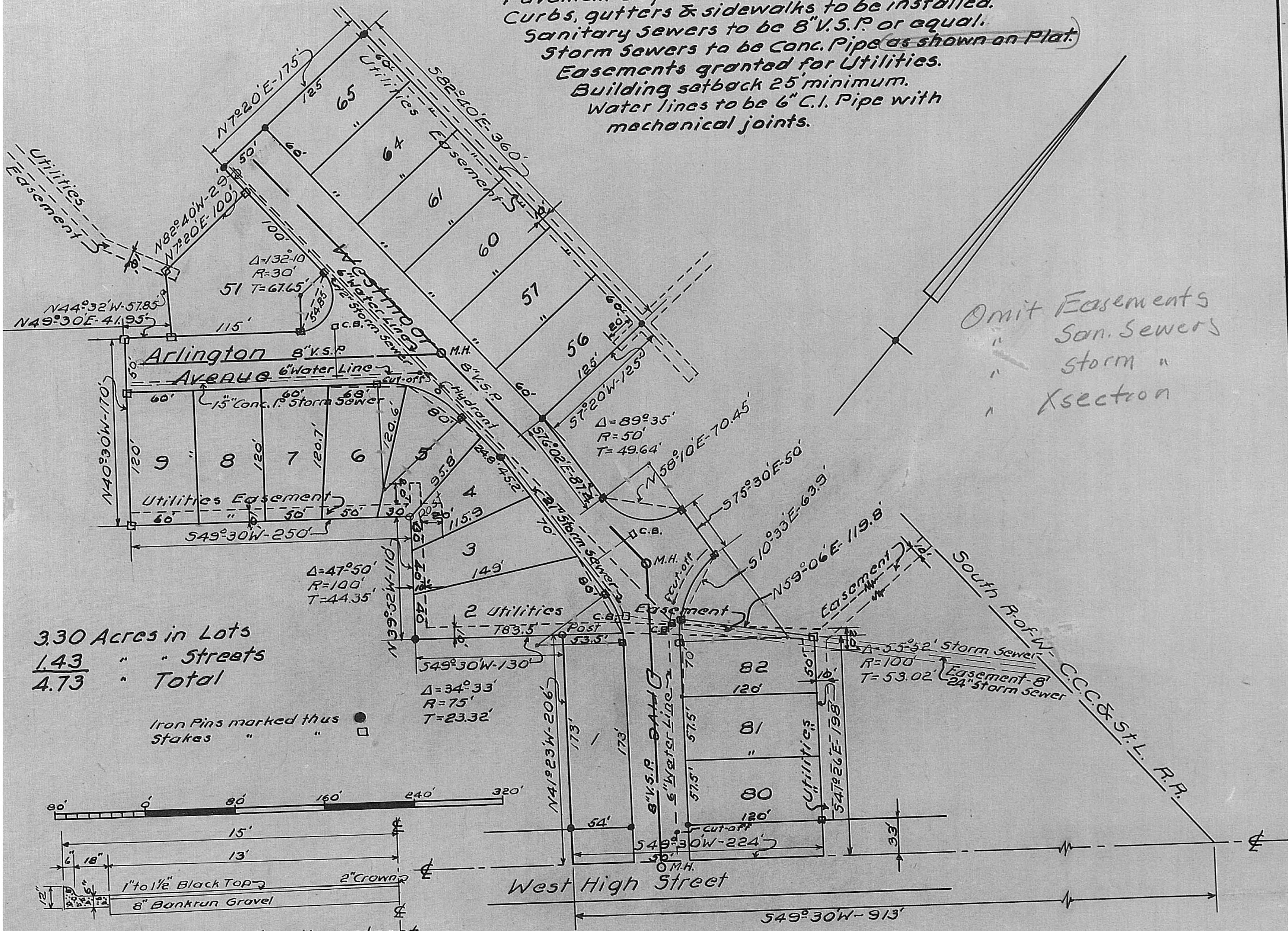
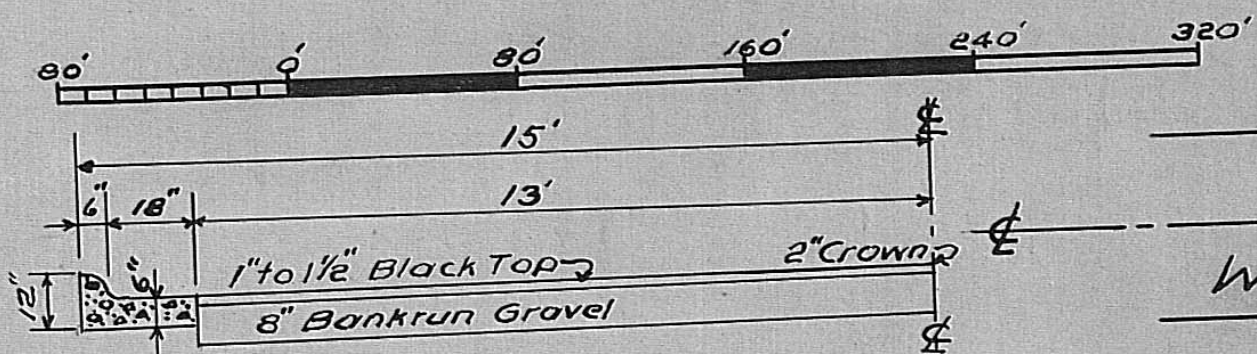


Notes:
 All streets 50' wide.
 Pavement 26' plus 4' curbs.
 Curbs, gutters & sidewalks to be installed.
 Sanitary sewers to be 8" V.S.P. or equal.
 Storm sewers to be Conc. Pipe as shown on Plat.
 Easements granted for Utilities.
 Building setback 25' minimum.
 Water lines to be 6" C.I. Pipe with mechanical joints.



3.30 Acres in Lots
 1.43 " " Streets
 4.73 " Total

Iron Pins marked thus ●
 Stakes " " □



Typical Half Section thru street.

WESTMOOR SUBDIVISION No. 1
 TO THE CITY OF LONDON, OHIO.
 DEVELOPED BY G. HAROLD FLAX-1954-5.

Harold Flax
 Registered Engineer No. 5851.

See Revised Plat
 etc