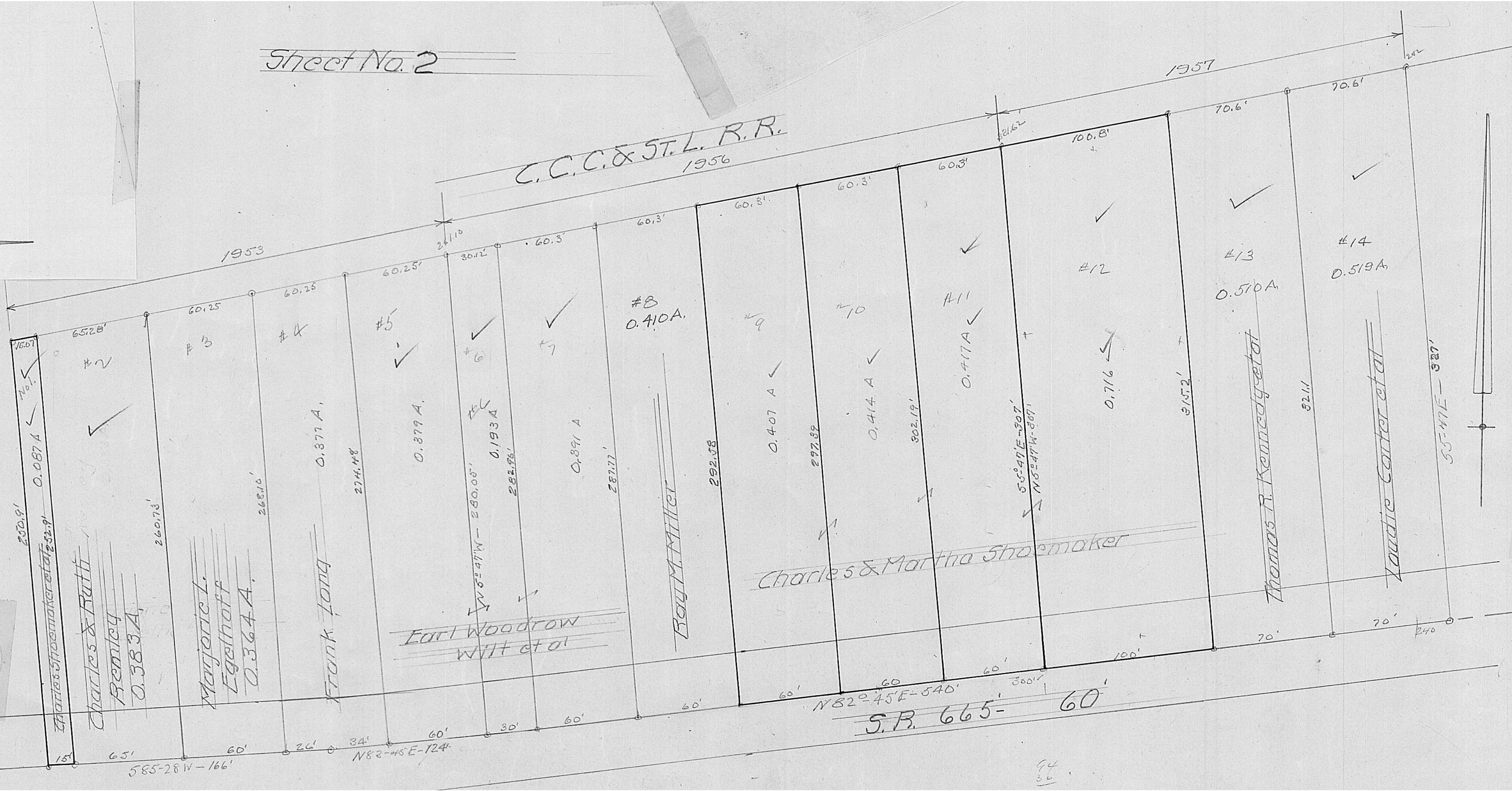


Sheet No. 2



C.C.C. & ST. L. R.R.
1956

1957

1953

200.9' 15.07' 70.1' 0.087 A

#2

#3

#4

#5

#6

#7

#8
0.410 A

#9

#10

#11

#12

#13

#14

200.9' Charles Shoemaker et al 232.9'

Charles & Ruth Bentley 0.383 A

Marjorie L. Egelhoff 0.364 A

Frank Long 0.377 A

Earl Woodrow Witt et al

Ray M. Miller

Charles & Martha Shoemaker

Thomas R. Kennedy et al

Laidie Carter et al

S.R. 665-60

65' 60' 26' 34' 60' N82-46E-124'

60' 60' 60' 300' N82-45E-540'

94
30

55-47E-327'

240

32.11'

315.2'

55-47E-307'
N65-47W-307'

302.19'

0.414 A

0.407 A

292.58

0.391 A

287.77'

282.96'

280.05'

274.48

268.10'

260.73'

65.25'

60.25'

60.25'

60.25'

30.12'

60.3'

60.3'

60.3'

60.3'

60.3'

100.81'

70.6'

70.6'

242