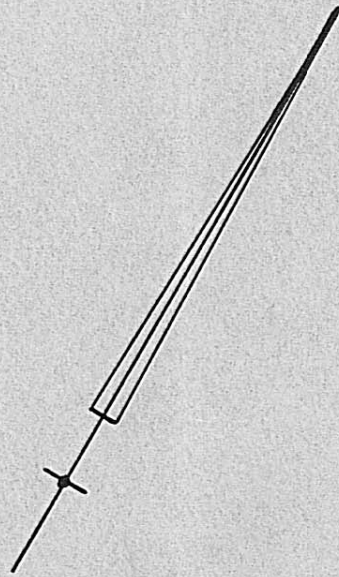
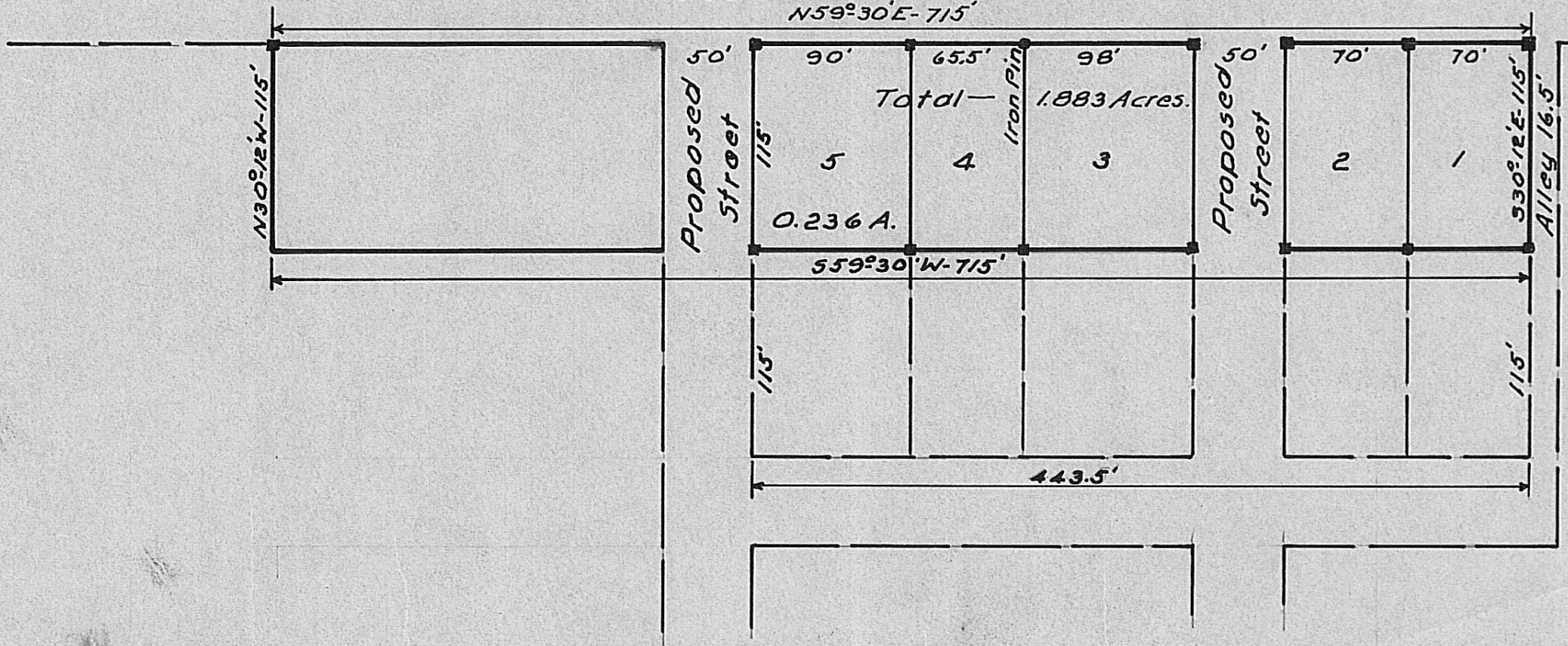


Olive Street 50'



Note:  
Stakes set at all corners marked thus ■

Mound Street 50'  
N59°30'E-715'



Subdivision of 1.883 acres-V.M.S. 8742  
located in the City of London, Ohio.  
surveyed for George Wickline - 1954

Scale 1" = 80'

Heber K. Kedahl  
Registered Engineer No. 5851.