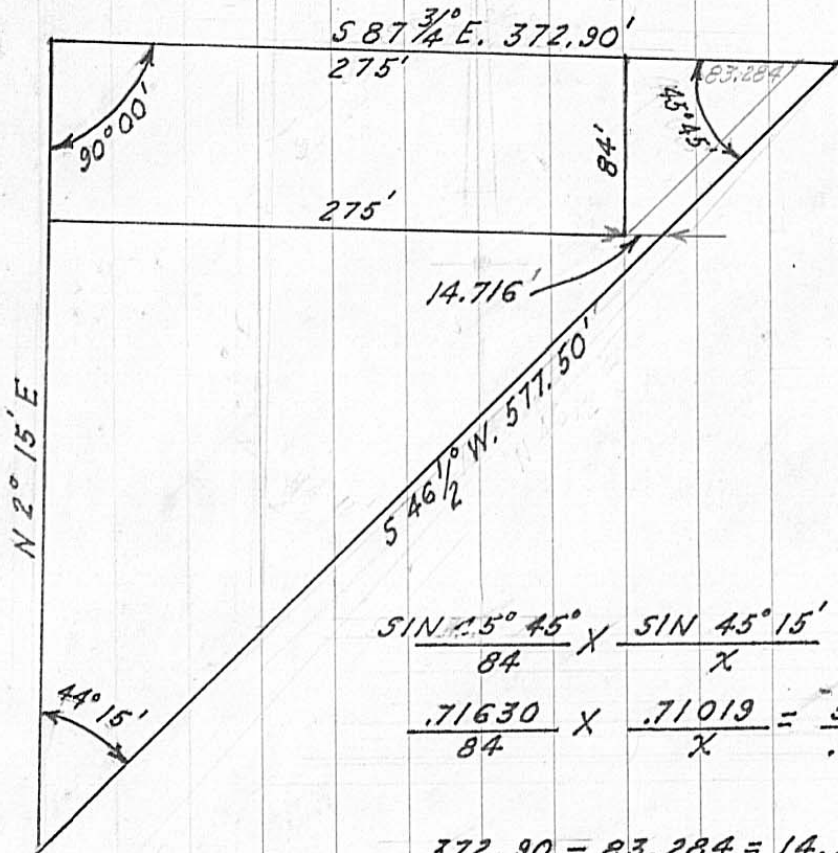


PH: 857 1454



$$\frac{\sin 45^{\circ} 45'}{84} \times \frac{\sin 44^{\circ} 15'}{x} = \frac{\sin 44^{\circ} 15'}{372.90} \times \frac{\sin 45^{\circ} 45'}{x}$$

$$\frac{.71630}{84} \times \frac{.71019}{x} = \frac{.59656}{372.90} \times \frac{.71630}{x}$$

$$.71630 \times .71019 = .59656 \times .71630$$

$$.5086 = .4273$$

$$.5086 - .4273 = .0813$$

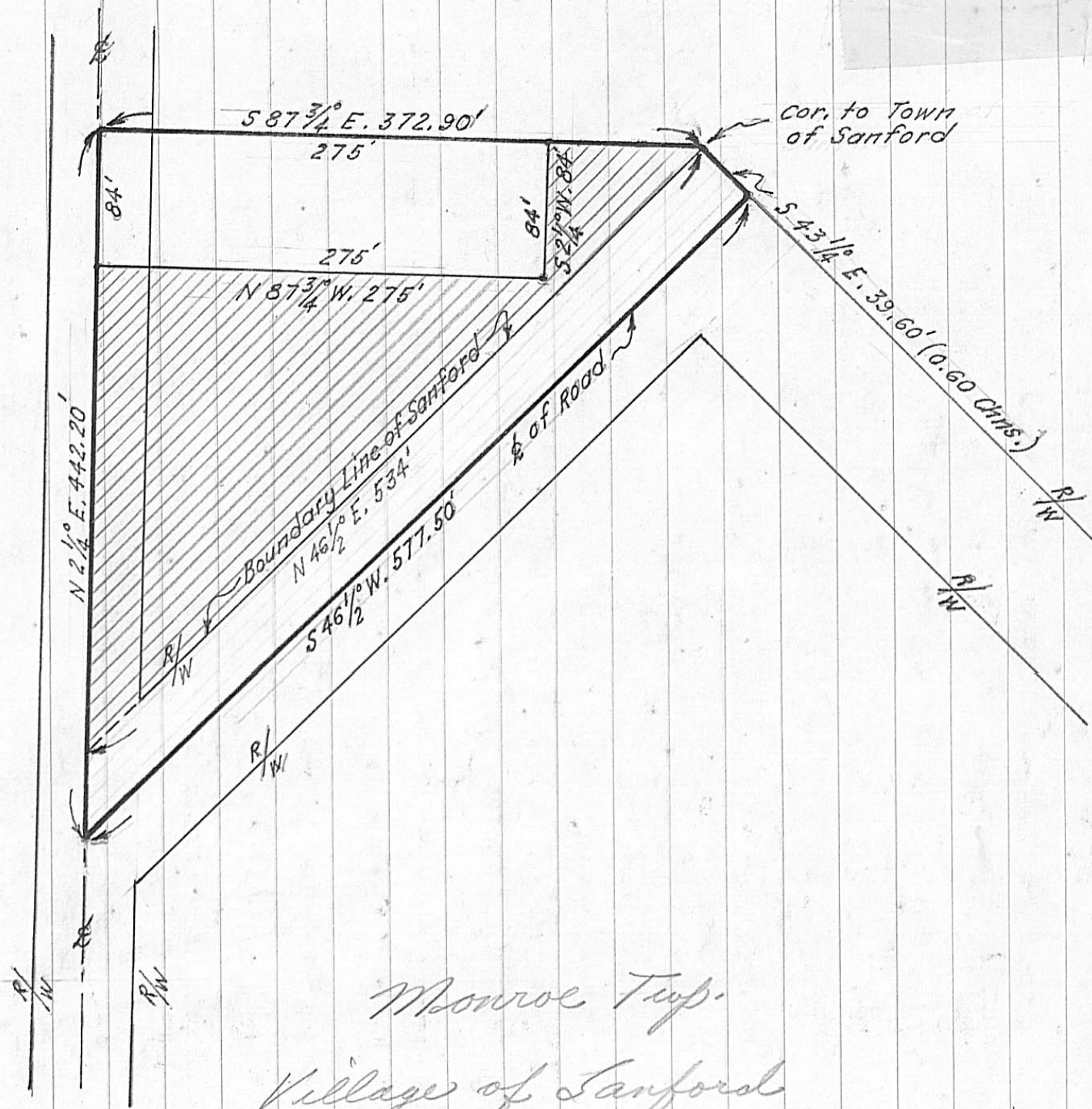
$$.0813 \times x = .4273$$

$$x = \frac{.4273}{.0813} = 5.25$$

$372.90 - 83.284 = 14.716'$ ANS.



Scale: 1" = 100'



Monroe Twp.
Village of Sanford