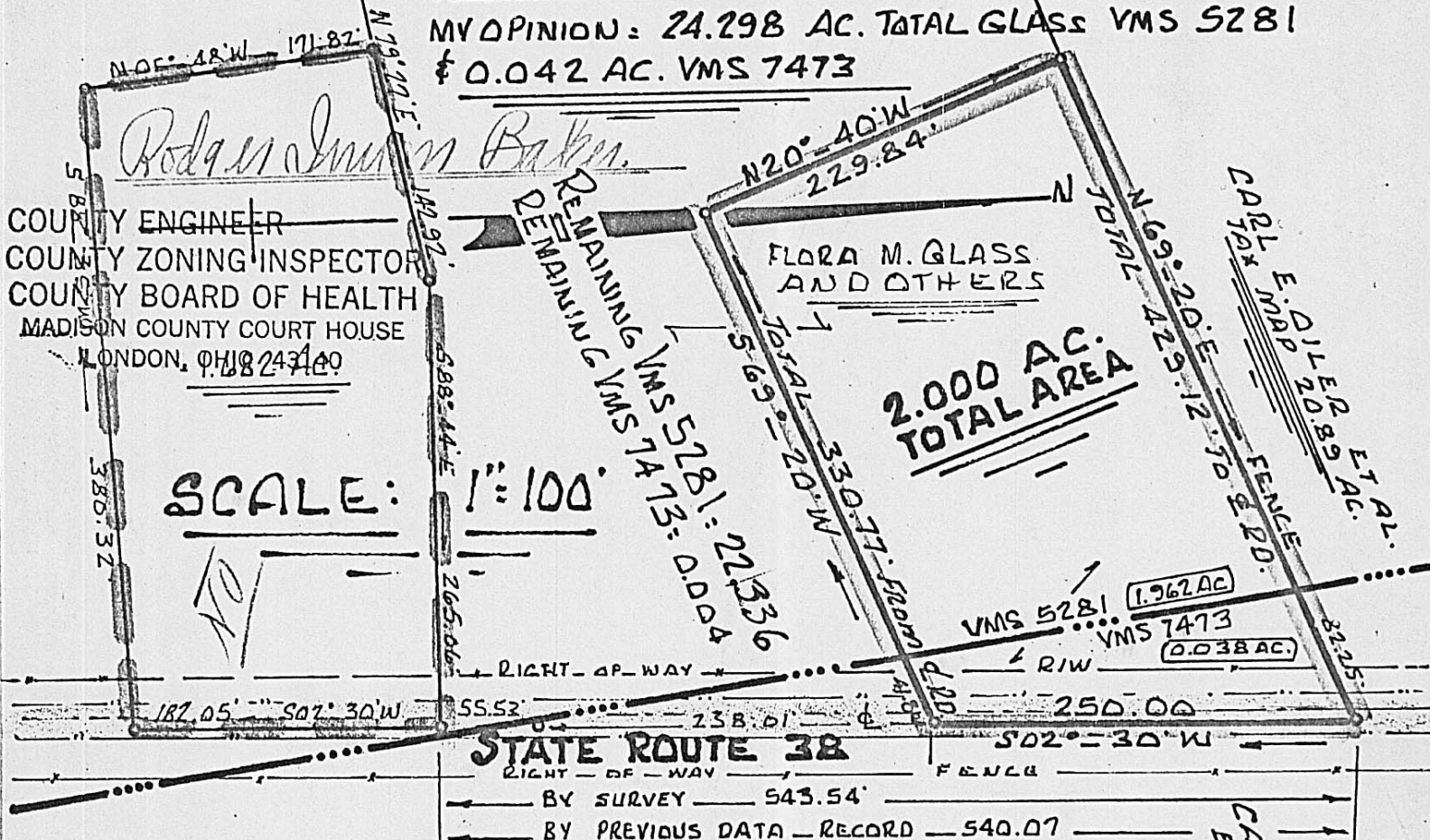


Registered Professional Surveyor

ORIGINAL 25.99 AC. AUDITOR DUPLICATE
 ORIGINAL 25.98 AC. CO. ENGR. TAX MAP
 THIS AREA IN VMS 5281 - 0.01 AC. VMS 7473

LONDON, OHIO

MY OPINION: 24.298 AC. TOTAL GLASS VMS 5281
 & 0.042 AC. VMS 7473



RODGER IRWIN BAKER
 COUNTY ENGINEER
 COUNTY ZONING INSPECTOR
 COUNTY BOARD OF HEALTH
 MADISON COUNTY COURT HOUSE
 LONDON, OHIO 43140

SCALE: 1" = 100'

To SANFORD (PLUMWOOD) 1108.65 FEET TO & JUNCTION FIRST ST.

SURVEY - MR. GLASS - ATTY: G. BAYNES
 PART OF 24.298 AC. VMS 5281
 PART OF 0.042 AC. VMS 7473
 MONROE TOWNSHIP - MADISON CO.
 S. 1/4 OF SANFORD - LONDON RFD
 SURVEY - JAN - 1971 - OHIO



RODGER IRWIN BAKER
 SURVEYOR
 RFD 3 - ROUTE 42 N.
 LONDON, OHIO 43140

7E