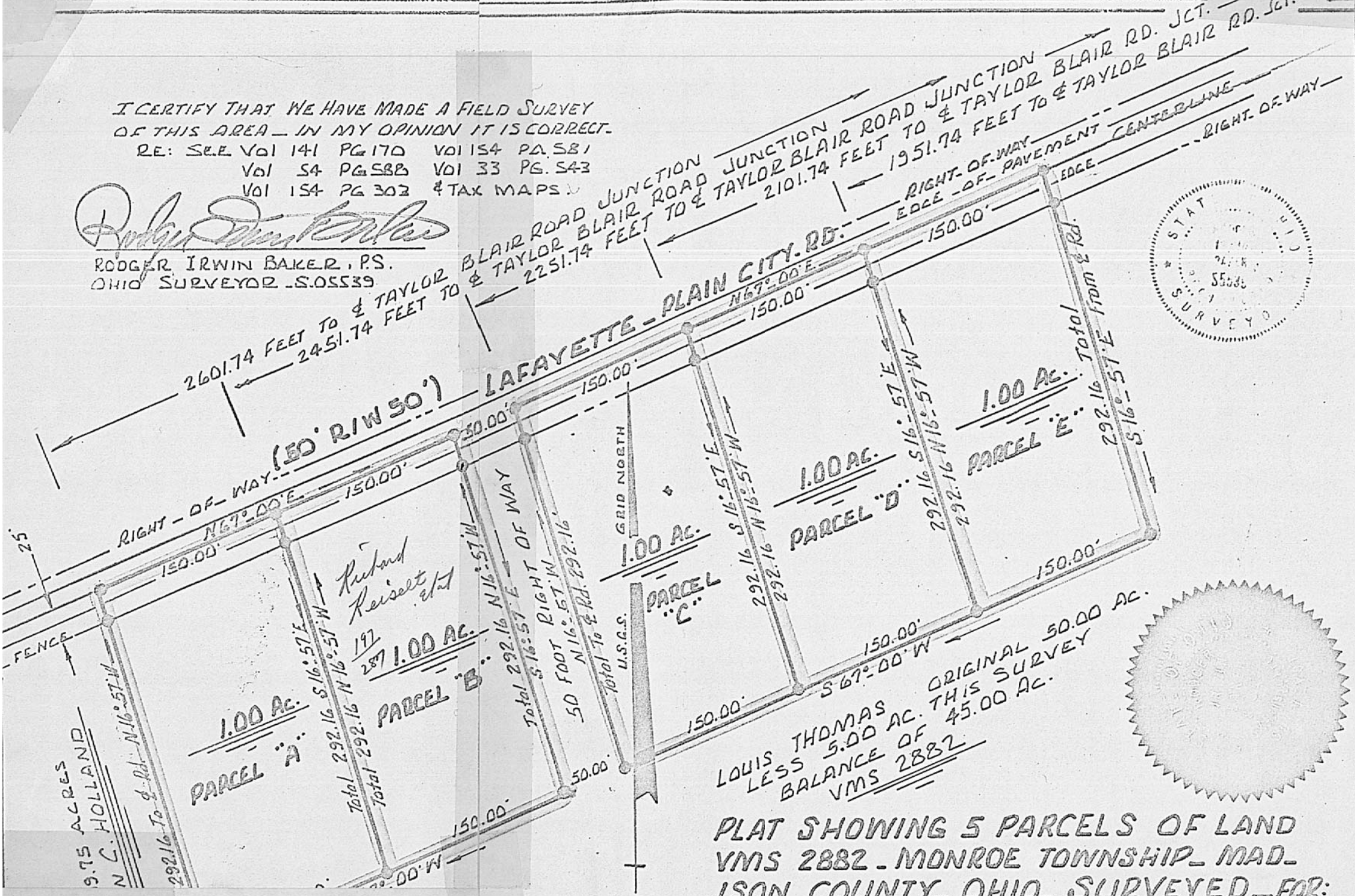


I CERTIFY THAT WE HAVE MADE A FIELD SURVEY OF THIS AREA - IN MY OPINION IT IS CORRECT.

RE: SEE VOL 141 PG 170 VOL 154 PA. 581
VOL 54 PG 588 VOL 33 PG. 543
VOL 154 PG 302 & TAX MAPS

Rodger Irwin Baker

RODGER IRWIN BAKER, P.S.
OHIO SURVEYOR S.05539



LOUIS THOMAS ORIGINAL 50.00 AC.
LESS 5.00 AC. THIS SURVEY
BALANCE OF 45.00 AC.
VMS 2882

PLAT SHOWING 5 PARCELS OF LAND
VMS 2882 - MONROE TOWNSHIP, MAD-
ISON COUNTY, OHIO, SURVEYED FOR:
LOUIS THOMAS, MARCH, 1970, BEING
A PART OF 50.00 ACRES, LEAVING 45.00 AC

