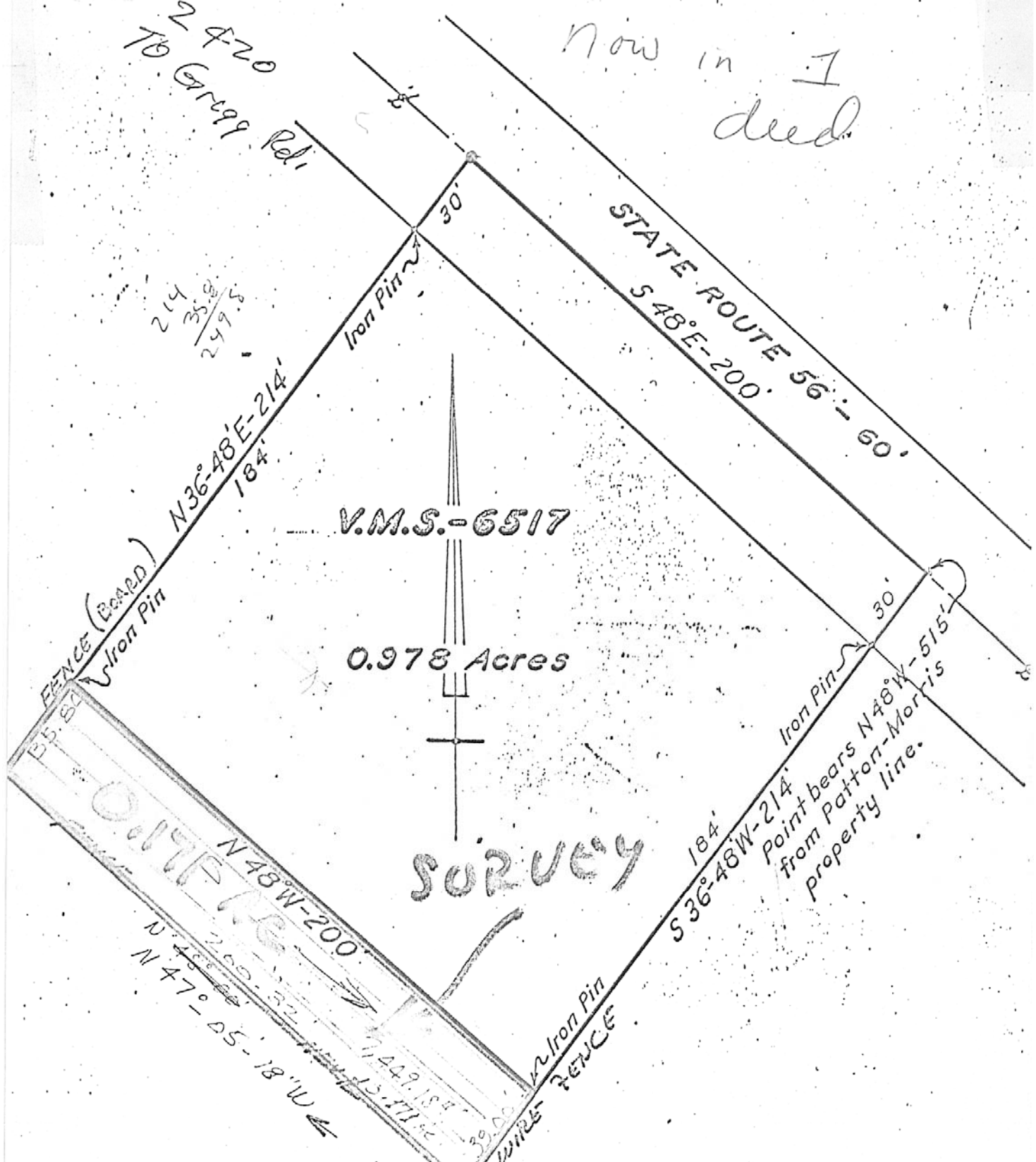


Now in I
deed

2 & 20
To Gary Reli

214
35.8
249.8



V.M.S.-6517

0.978 Acres

SURVEY

Parcel of land in Oak Run Township,
Madison County, Ohio, surveyed for
Russell J. Patton - 1964.

Scale: 1" = 40'

L.C. Roush
Registered Engineer No. 5274