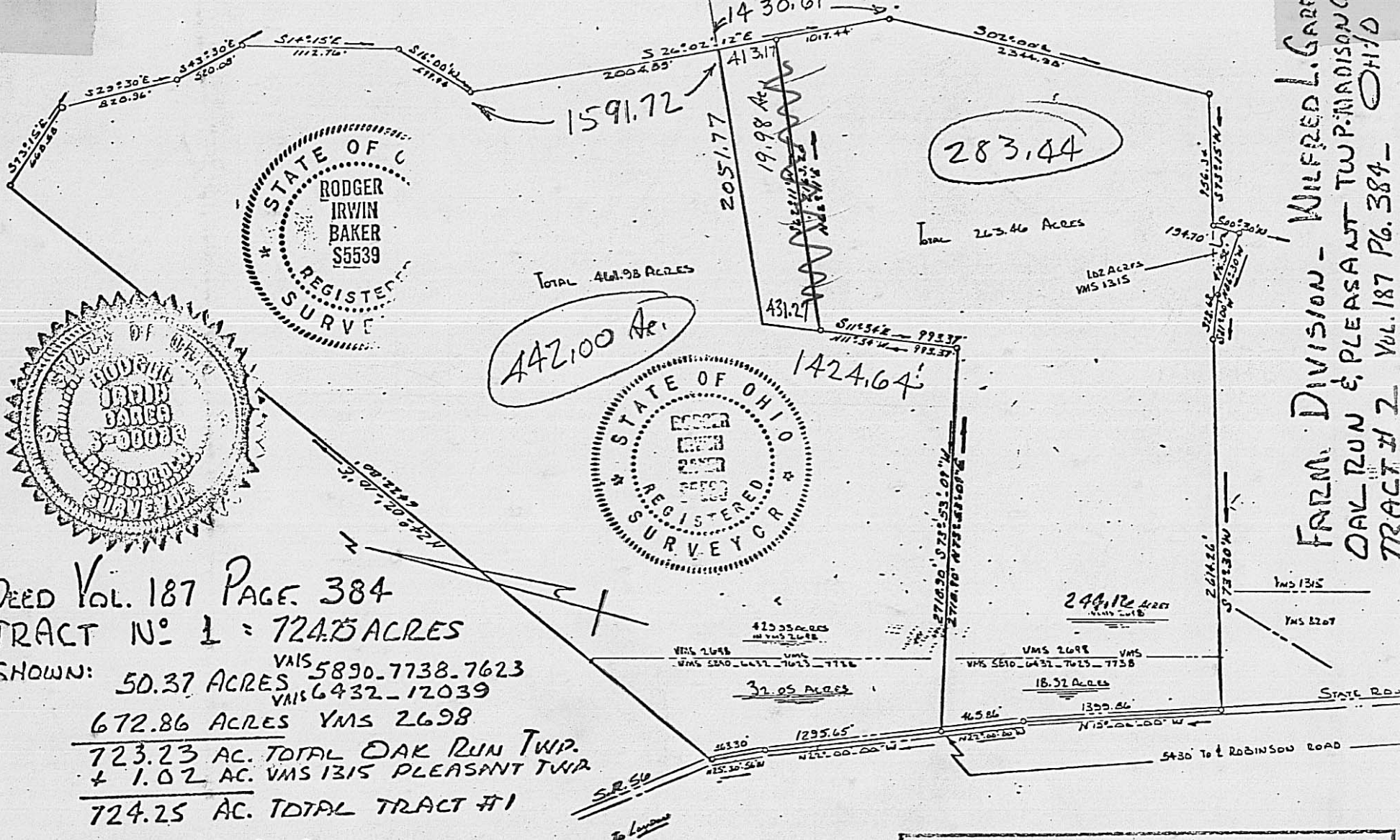


DENCE - HOUSE # 1111, RT. 2 - (STATE RT. 42 N.) LONDON-DELAWARE ROAD - LONDON, OHIO 43140



DEED VOL. 187 PAGE 384
 TRACT N^o 1 = 724.25 ACRES
 SHOWN: 50.37 ACRES VMS 5890-7738-7623
 672.86 ACRES VMS 6432-12039
 723.23 AC. TOTAL OAK RUN TWP.
 + 1.02 AC. VMS 1315 PLEASANT TWP.
 724.25 AC. TOTAL TRACT #1

BY SURVEY AND CALCULATIONS DEC. 1973
 461.98 ACRES TOTAL 429.93 AC. VMS 2698
 32.05 AC. VMS 5890 6432 7623
 TOTAL 461.98 AC. VMS 7738 & 12039

BY SURVEY AND CALCULATIONS DEC. 1973
 263.46 ACRES TOTAL 249.12 AC. VMS 2698 OAK RUN
 18.32 AC. VMS 5890 6432 7623 7738 12039 OAK RUN
 1.02 AC. VMS 1315 PLEASANT TWP
 263.46 TOTAL

I certify I have prepared this plat and description from the best field data... and from the information furnished me.. In my opinion this platting does conform with the existing evidence.... I believe it to be correct:

Rodger Irwin Baker
 Surveyor #S-05539...Ohio

FARM DIVISION - WILFRED L. GARRETT
 OAK RUN & PLEASANT TWP. MADISON COUNTY OHIO
 TRACT # 1 VOL. 187 PG. 384 -