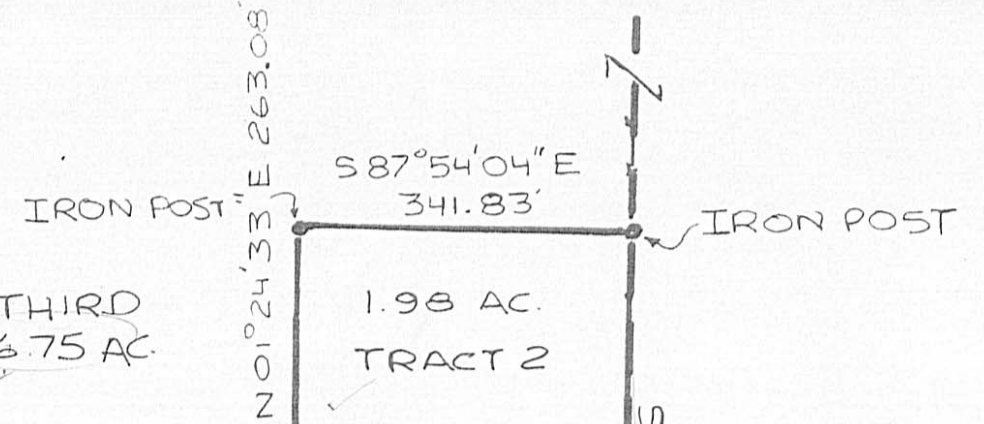


SCALE: 1 INCH = 200 FT.

OTTO LEWIS & CODIS LEWIS
D.B. 153, PG. 370 REMAINDER OF THIRD TRACT OF 96.75 AC.
(REFERENCE BEARING) S 89° 00' 00" E 2101.52'



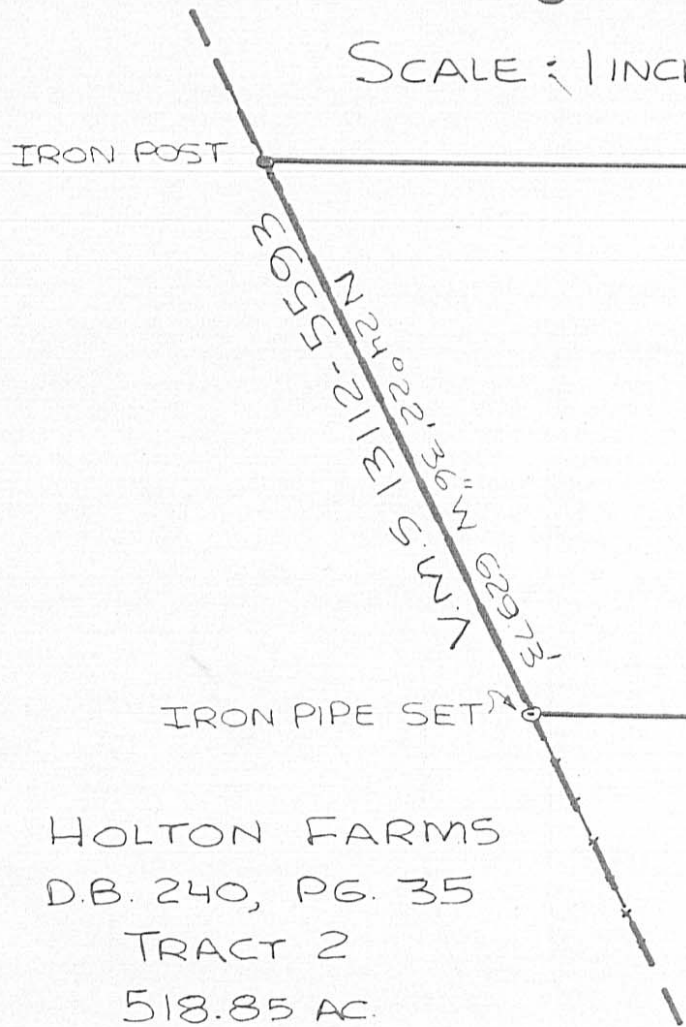
1.98 AC.
TRACT 2

STONE FOUND
PT. OF BEG.

SECOND TRACT
66.67 ACRES
OF LEWIS.

Y.M.S 6265-8119-8174

33.0845 AC.



HOLTON FARMS
D.B. 240, PG. 35
TRACT 2
518.85 AC.

N 87° 59' 04" W 725.05'

N 88° 01' 18" W 1442.29'

REMAINING PART OF
TRACT 116 AC.

S 01° 32' 57" W 863.00'
Y.M.S 10477

PLAT OF SURVEY SHOWING 33.0845 AC. SURVEYED
OUT OF AN 116 AC TRACT (ORIG.) AND ALL OF A
1.98 ACRE TRACT IN THE ESTATE OF C. RAY
HUNTER, AS RECORDED IN DEED BK. 233, PG. 480
PAINT TWP., MADISON, COUNTY, OHIO

BABB ENGINEERING & SURVEYING
11 EAST 1ST STREET
LONDON, OHIO 43140

JOB NO. 02581
Neil Babb
NEIL BABB P.S. 5969

11.27
1.90