

OTTO LEWIS et al

SCALE: 1" = 200'

(DEED: S01° 45' W - 11.44 CHAINS OR 755.80')  
EXISTING R. FENCE

NORTH

EXISTING PIPE POST SET IN CONCRETE BRACED EACH WAY

PIPE POST SET IN CONC. FENCE NOTE: FENCE NOT ON R. 1.86' SOUTH OF WIRE FENCE

ARBIT. COORD.

(A) N 10,000.00  
E 10,000.00

(B) N 9811.70  
E 9995.45

(C) N 9775.79  
E 10284.43

(D) N 9239.36  
E 10242.53

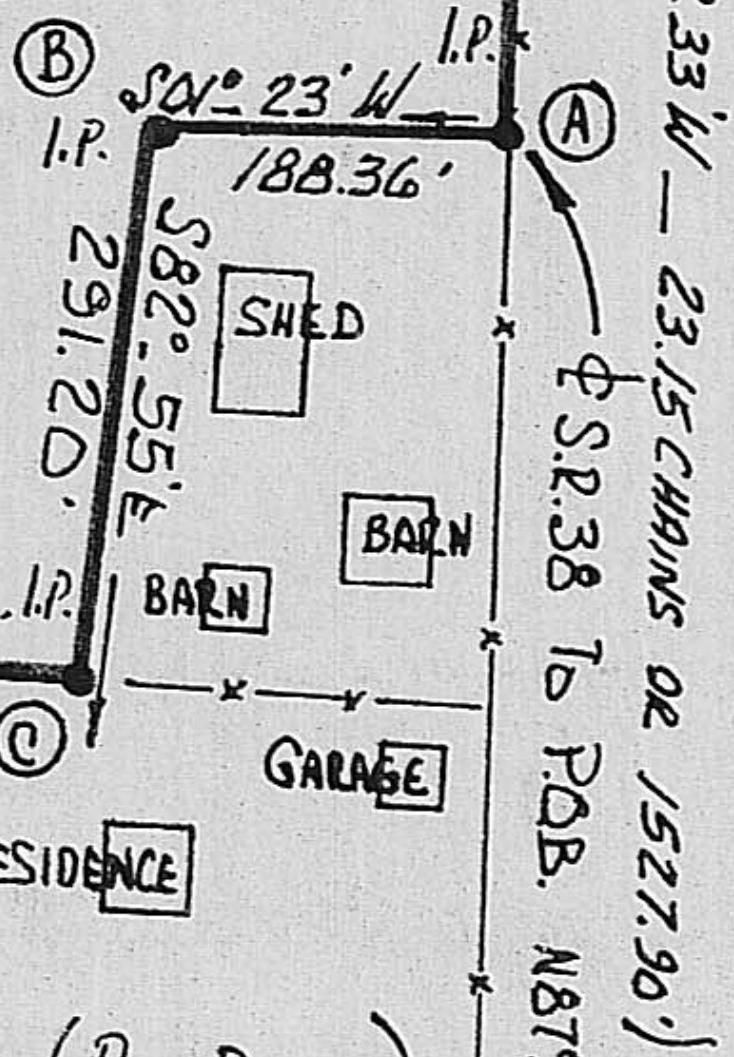
(E) N 9271.91  
E 9310.54

(F) N 10027.87  
E 9334.95

8.250± Ac. in VMS 14480  
6.808 Ac. in VMS 6062  
655,921 SQ. FT.  
15.0579 AC.  
OR  
15.058 ACRES

A PORTION OF:  
26.25 ACRES

SCALE: 1" = 200'



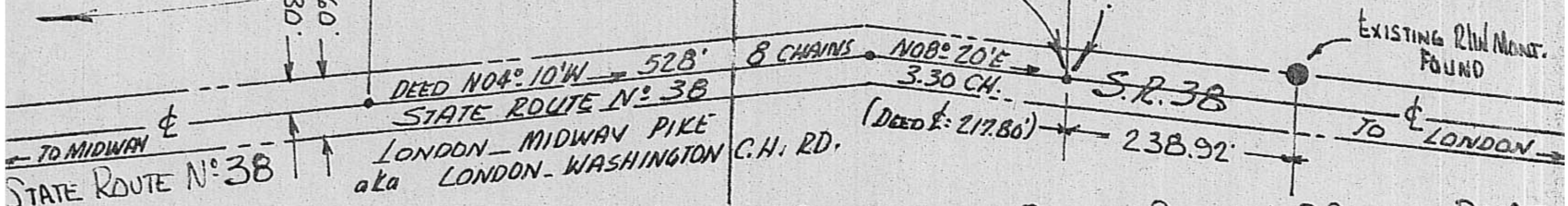
RESIDUE: 11.1921 Ac. (PER DEED)  
WILLIS C. BUSH & BETTY A. BUSH  
SEE DEED MAY 7<sup>TH</sup> 1975  
VOL. 224 PG. 275

KATHRYN FISHER et al  
332.47 A.

REVERSE DISTANCE  
3,372.19 FT.  
PRECISION: 1/181820  
SQ. FT. = 655,921  
AREA = 15.0579 Ac.  
ERROR N. +0.002'  
E. -0.018'

APRIL 17<sup>TH</sup> 1978  
Robert J. Blaw

FROM LINSON ROAD ABOUT  
4973.5 FT. ±



BOUNDARY - FIELD SURVEY SPLIT - PLAT  
6.808 Ac. in VMS 6062 & 8.250 Ac. in 14480  
TOTAL OF 15.058 AC. PART OF 26.25 AC.  
PAINT TOWNSHIP - MADISON CO., D.  
SURVEYED APRIL 1978  
FOR: WILLIS C. BUSH & BETTY A. BUSH  
SEE ORIGINAL DEED VOL. 224 PG. 275