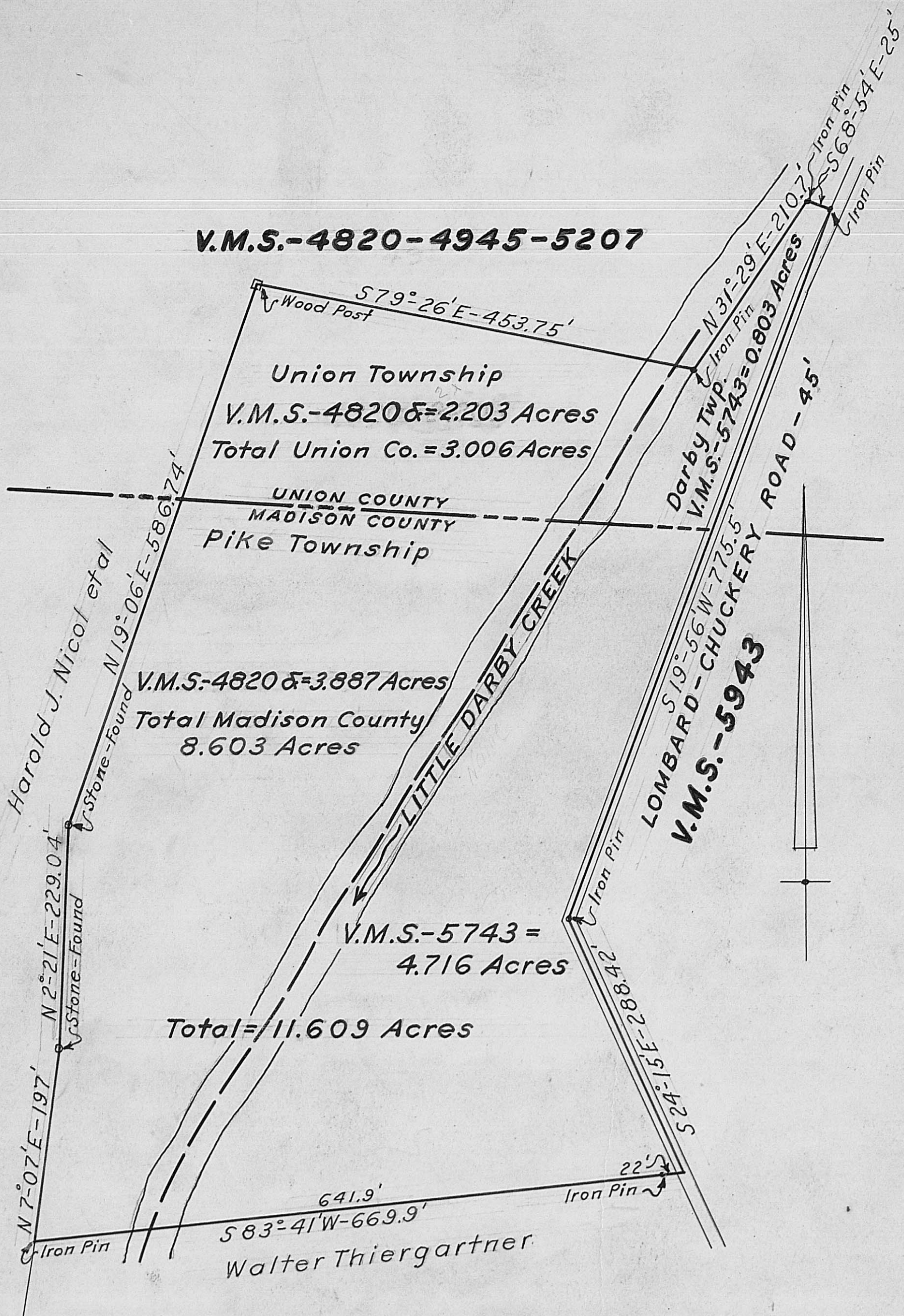


V.M.S.-4820-4945-5207



Union Township
 V.M.S.-4820 & = 2.203 Acres
 Total Union Co. = 3.006 Acres

UNION COUNTY
 MADISON COUNTY
 Pike Township

V.M.S.-4820 & = 3.887 Acres
 Total Madison County
 8.603 Acres

V.M.S.-5743 =
 4.716 Acres

Total = 11.609 Acres

Darby Twp.
 V.M.S.-5743 = 0.803 Acres
 LOMBARD-CHUCKERY ROAD - 45'
 V.M.S.-5943

**Survey of parcel of land in
 Union & Madison Counties, Ohio,
 made for John Salmon - 1963.**

Scale: 1" = 100'

Helge H. Kjedahl
 Registered Engineer No. 5851