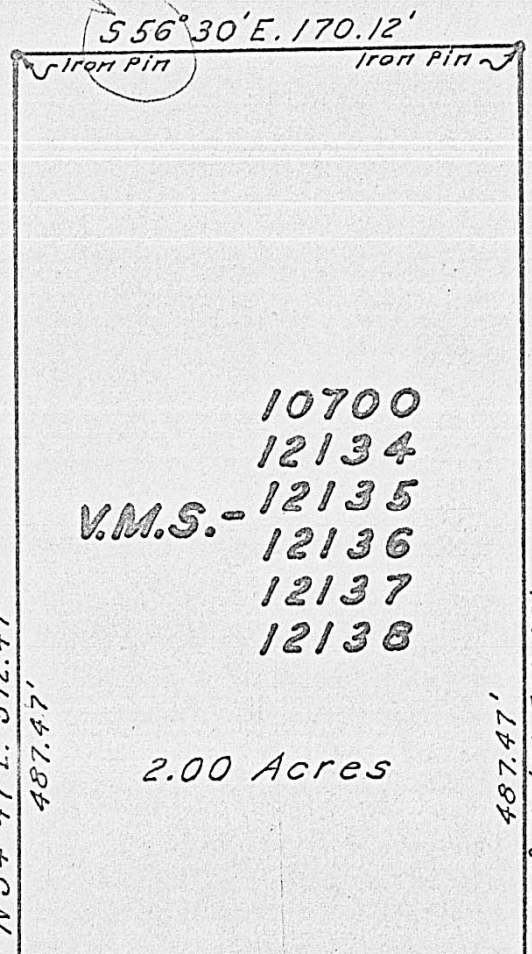
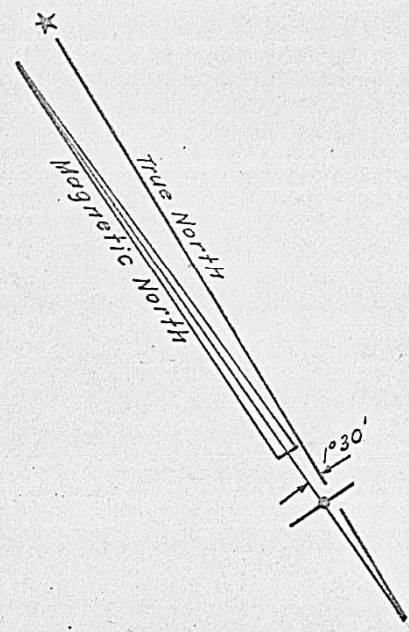


Note:-
 Boundary lines established as per Client's request.
 Bearings derived from Magnetic Circle - K&E Transit #142460

Elmer Jantzi et al
 8.00 Acres

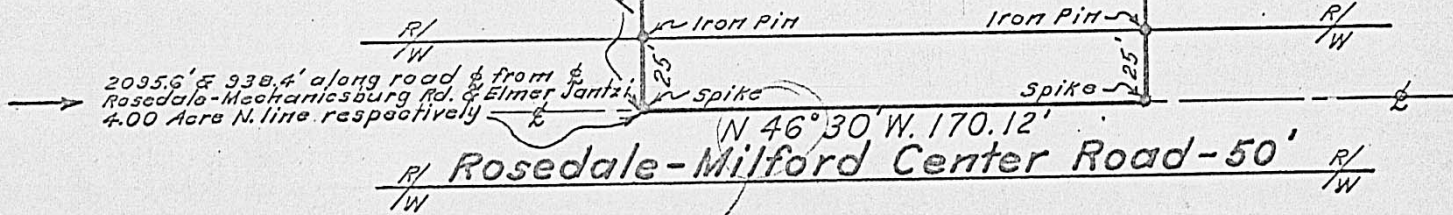


- 10700
- 12134
- V.M.S. - 12135
- 12136
- 12137
- 12138

2.00 Acres

Handwritten calculations:
 374.47
 170.12

 544.59
 91° - 17'



Plat of 2.00 Acres in Pike Township,
 Madison County, Ohio, surveyed for
 Walter Beachy, Willard Mayer & Elmer Jantzi
 Apr., 1968

Scale: 1" = 60'

J.C. Roush
 Registered Engineer No. 5274