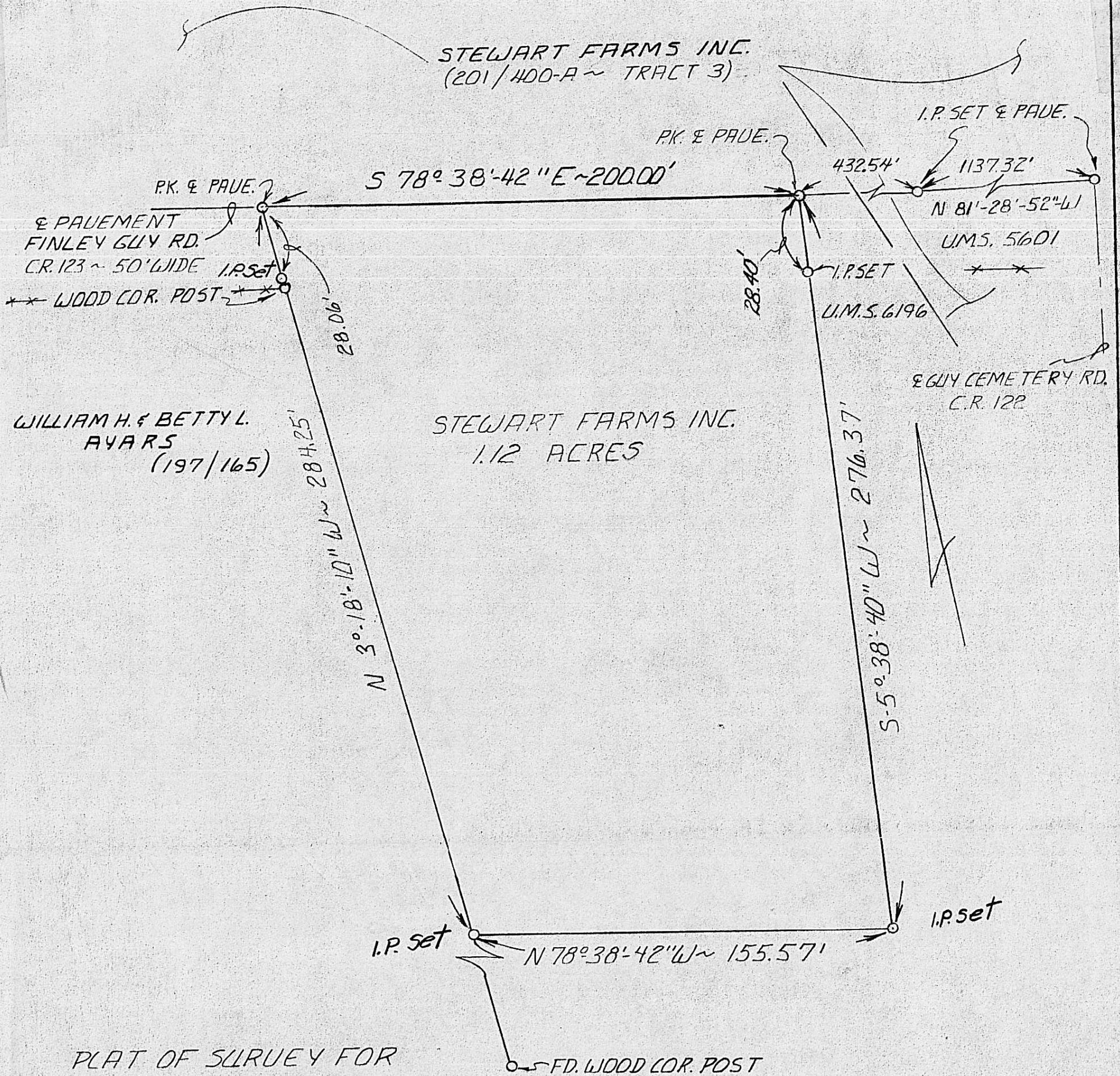


STEWART FARMS INC.
(201/400-A ~ TRACT 3)



WILLIAM H. & BETTY L.
AYARS
(197/165)

STEWART FARMS INC.
1.12 ACRES

PLAT OF SURVEY FOR
STEWART FARMS INC.
PIKE TWP. ~ U.M.S. 6196
MADISON CO., OHIO

- 1) SCALE 1" = 40'
- 2) I.P. SET ARE 5/8" x 30" IRON RODS
- 3) BEARINGS ASSUMED
- 4) DEED BOOK & PAGE REF. IN PARENTHESES
- 5) MONUMENT REFERENCES ON FILE AT
FLEMING, PAGE, STOLTE INC. MARYSVILLE, OHIO

I hereby certify that this plat was prepared from an actual field survey and to the best of my knowledge accurately represents the tract surveyed.

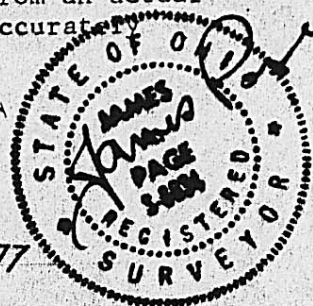
JAMES A. PAGE P.S.

S-6034

AUG. 26, 1977

Revised Sept 12, 77

F.P.S. JOB NO 303 ~ F.B. 5, Pgs. 66-69



fleming,
page,
stolte,
inc. consulting engineers
and surveyors
marysville,
ohio