

Artech Subdiv.

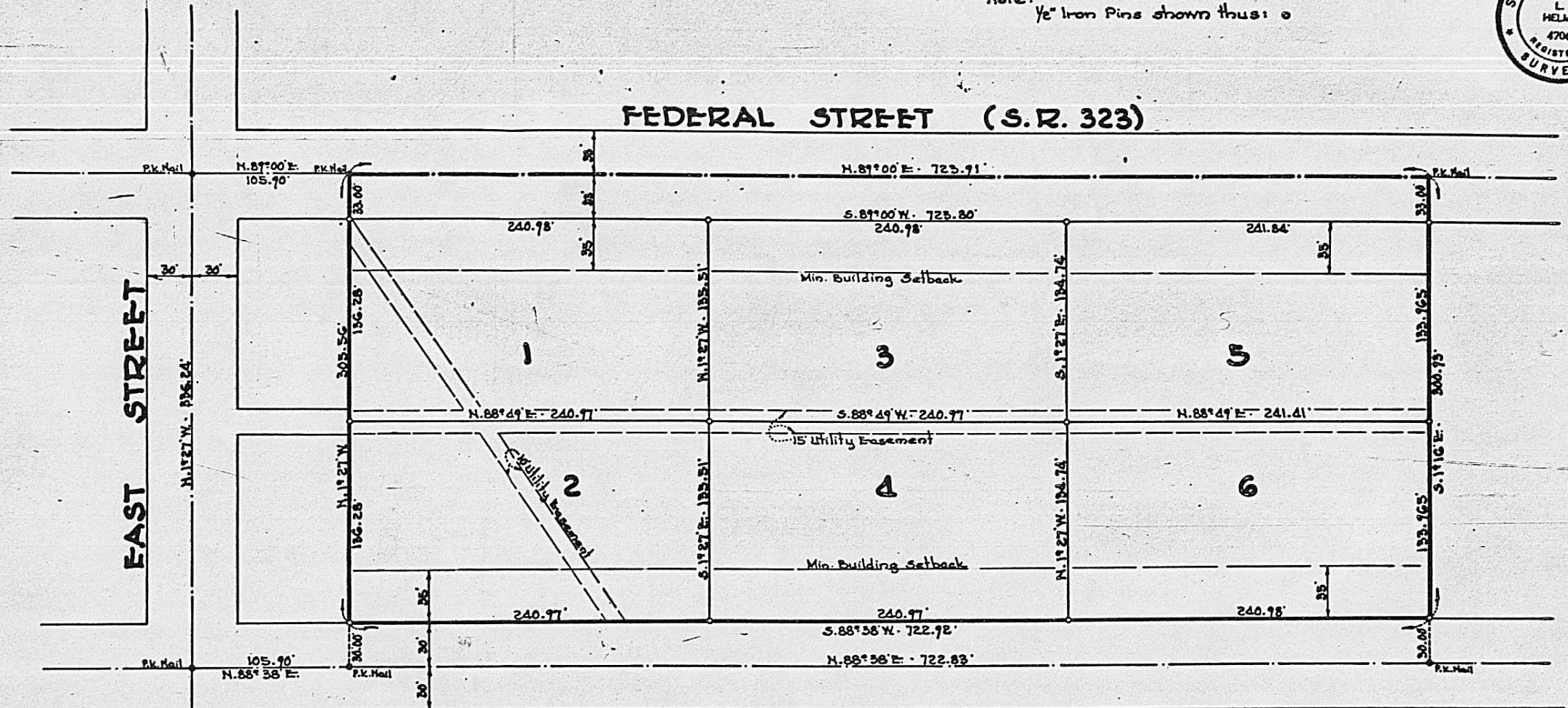
I hereby certify that this plat is a correct representation of a survey made by me and that monuments are set as shown.

July 9, 1973.

Gale L. Helms
 Gale L. Helms
 Reg. Surveyor #4706



Note: 1/2" Iron Pins shown thus: o



Situated in Village of Midway, Township of Range, County of Madison, State of Ohio, Military Survey 6050-7263, containing 5.036 Acres and being all of the 5.44 acre tract as conveyed to ARTECH CONSTRUCTION, INC. and described in Deed Book 212, Page 273, Madison County Recorder's Office.

We, the undersigned, being all of the owners of the lands herein platted do hereby voluntarily consent to the execution of this plat of ARTECH SUBDIVISION, Lots 1 thru 6 inclusive, and dedicate the streets or part thereof as shown hereon to public use forever.

We also hereby dedicate easements to run with the land, for water, sanitary sewer, storm sewer, storm drainage, gas, electric, telephone or other public utility lines or services under, on or over those strips of land designated hereon as "Utility Easement".

Plat approved and accepted this 24 day of AUG-1973 1973 by Ordinance No. _____ adopted by Village Council of Village of Midway, Ohio

Roy Blossard
 Clerk

Howard Davis
 Mayor

Transferred this 4th day of September 1973.

Raymond M. Weiner
 Madison County Auditor

File Number _____