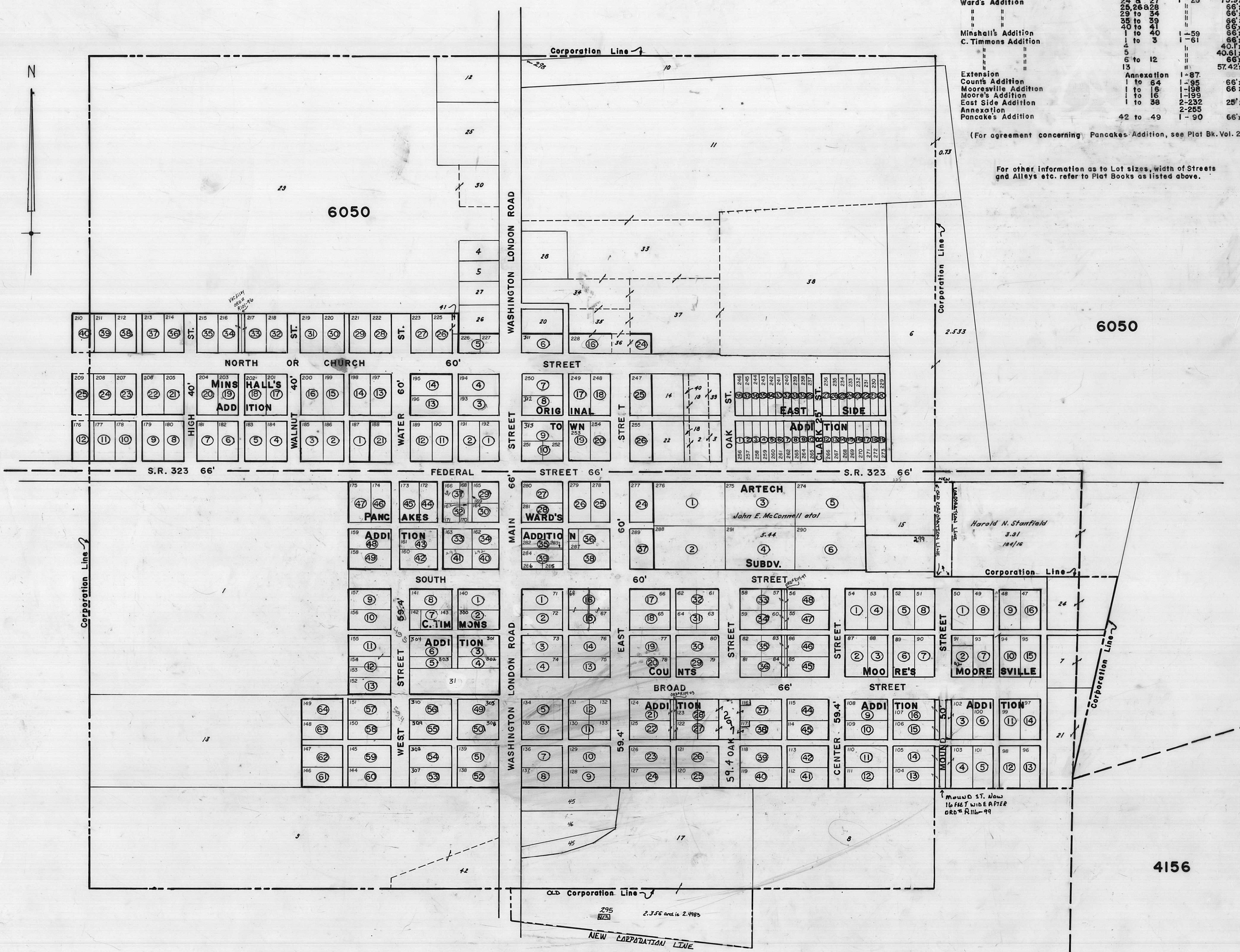


Subdivisions & Additions Etc. to Midway			
Subdivisions	Plat Bk. & Pg. in Recorder's Office	Plat Bk. & Pg. in Recorder's Office	Plat Bk. & Pg. in Recorder's Office
Original Town	1 to 14	1 - 7	66' x 132'
"	16 to 21	"	"
"	24 to 26	"	"
Ward's Addition	25, 26, 28	1 - 25	75.9' x 132'
"	29 to 34	"	66' x 132'
"	35 to 39	"	66' x 132'
"	40 to 41	"	66' x 132'
Minshall's Addition	1 to 40	1 - 59	66' x 132'
C. Timmons Addition	1 to 3	1 - 61	66' x 132'
"	4	"	40.1' x 40.6' x 132'
"	5	"	40.6' x 41.12' x 132'
"	5 to 12	"	66' x 132'
"	13	"	57.42' x 132'
Extension		Annexation	1 - 87
Counts Addition	1 to 64	1 - 95	66' x 132'
Moore's Addition	1 to 16	1 - 98	66' x 132'
Moore's Addition	1 to 16	1 - 99	66' x 132'
East Side Addition	1 to 38	2 - 232	25' x (See statement)
Annexation		2 - 255	
Pancakes Addition	42 to 49	1 - 90	66' x 132'

(For agreement concerning Pancakes Addition, see Plat Bk. Vol. 2, Pg. 185)

For other information as to Lot sizes, width of Streets and Alleys etc. refer to Plat Books as listed above.



7263
7799

MIDWAY
(SEDALIA)

SCALE 0 4 8 12 16 20 24 POLES

1970