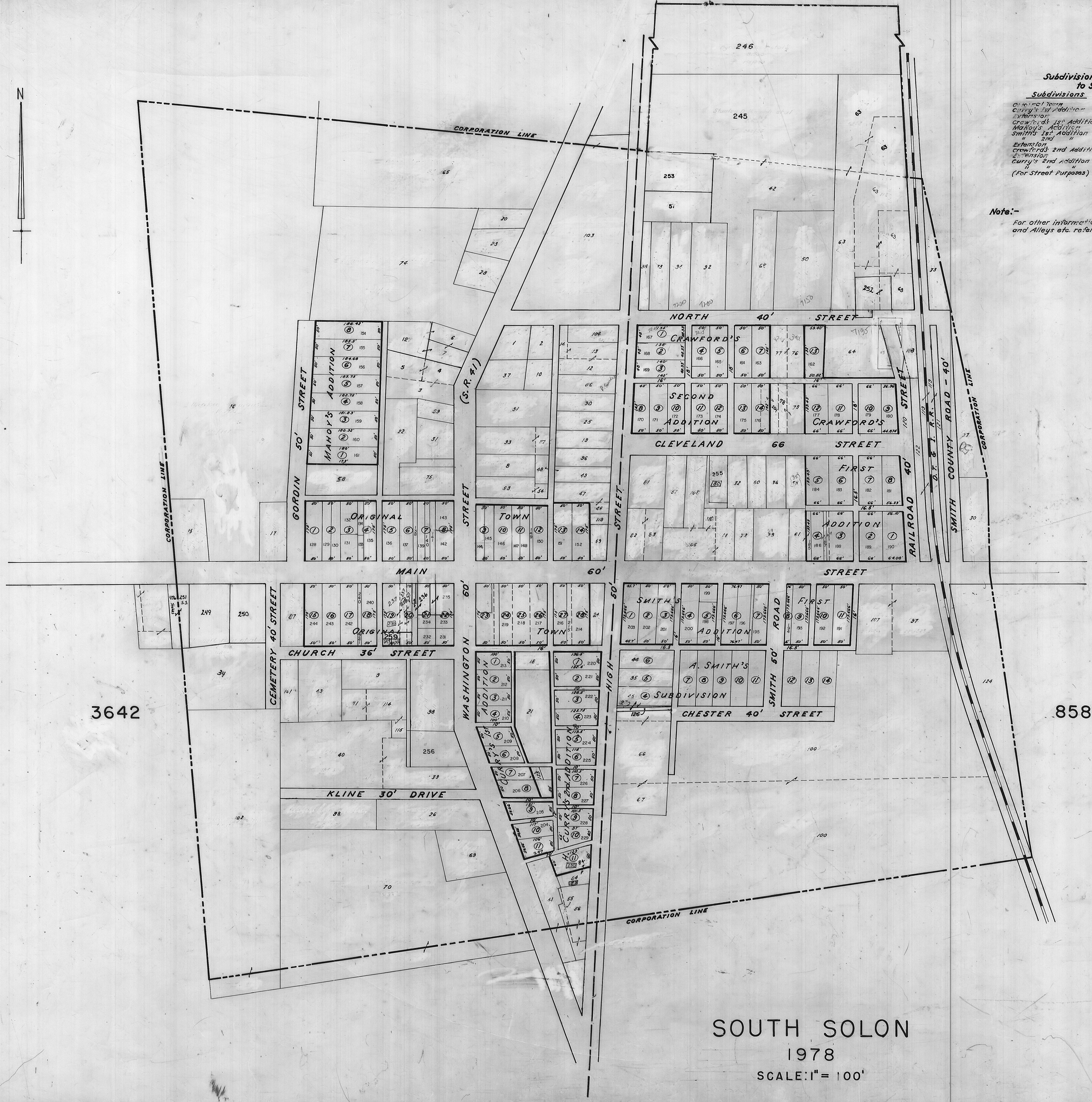


Subdivisions & Additions etc. to South Solon

Subdivisions	Plat Bk. & Pg. in	Recorders Office
Original Town	1 70 29	1 5
Crawford's 1st Addition	1 70 8	1 69
Extension	Annexation	1 71
Crawford's 1st Addition	1 70 15	1 101
Marion's Addition	1 70 18	1 111
Smith's 1st Addition	1 70 11	1 123
2nd "	Not Recorded	
Extension	Annexation	1 147
Crawford's 2nd Addition	1 70 14	1 167
Extension	Annexation	1 173
Crawford's 2nd Addition	1 70 11	1 202
Extension	Annexation	1 202
Crawford's 2nd Addition	9 to 11	1 202 Washington St.
(For Street Purposes)		2 246

Note:-
For other information as to Lot sizes, width of Streets and Alleys etc. refer to Plat Books as listed above.



3642

8582

SOUTH SOLON
1978
SCALE: 1" = 100'