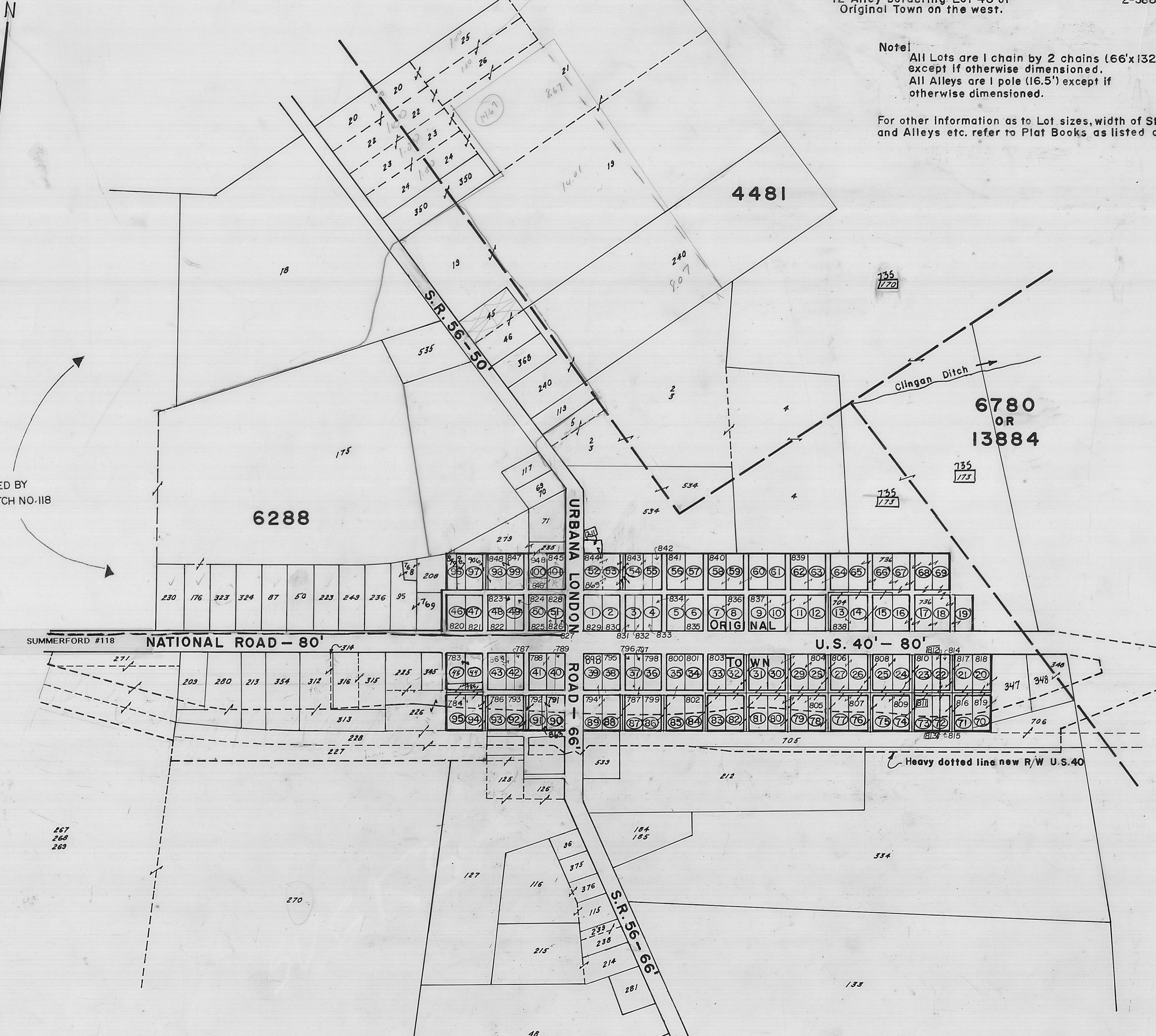
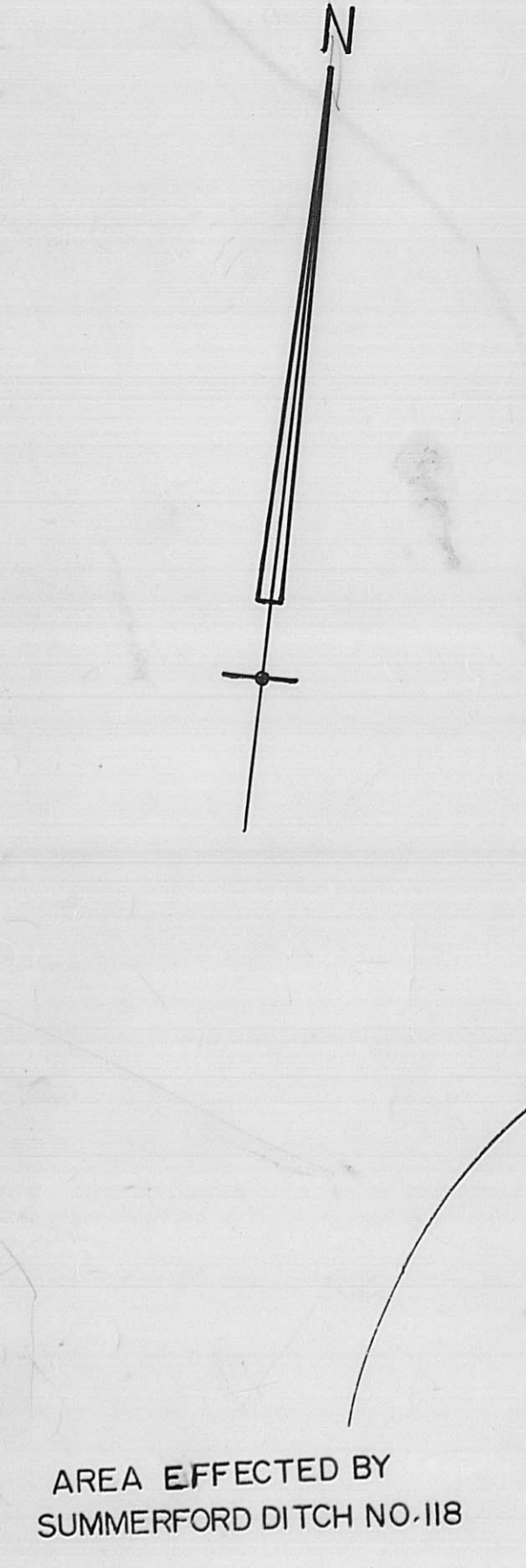


**Subdivisions & Additions Etc.
to Summerford**

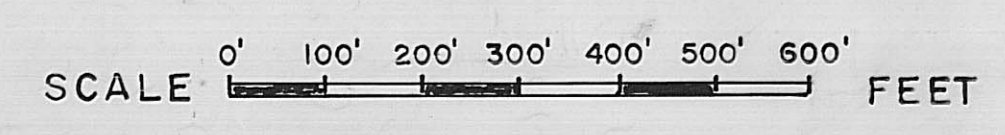
Subdivisions	Lots	Plat Bk. & Pg. in Recorder's Office
Original Town	1 to 101	1-11
12' Alley bordering Lot 46 of Original Town on the west.		2-388

Note:
All Lots are 1 chain by 2 chains (66'x132') except if otherwise dimensioned.
All Alleys are 1 pole (16.5') except if otherwise dimensioned.

For other information as to Lot sizes, width of Streets and Alleys etc. refer to Plat Books as listed above.



SUMMERFORD



1970