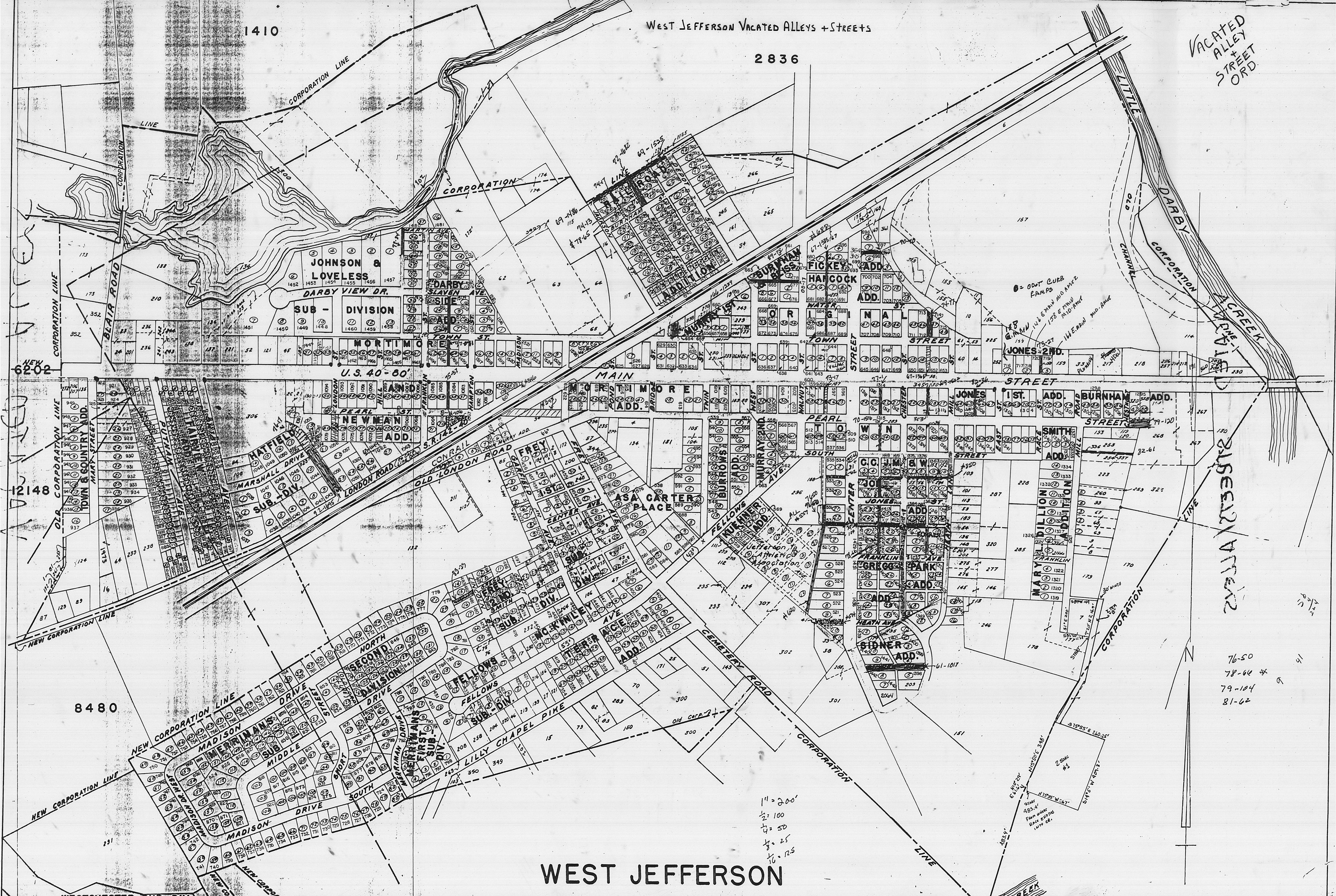


1410

WEST JEFFERSON VACATED ALLEYS + STREETS

2836

VACATED ALLEY + STREET ORD



NEW 6202

12148

8480

WEST JEFFERSON

76-50  
 78-64  
 79-104  
 81-62

1" = 200'  
 1/2" = 100'  
 1/4" = 50'  
 1/8" = 25'  
 1/16" = 12.5'

250x4  
 100x20  
 100x20  
 100x20