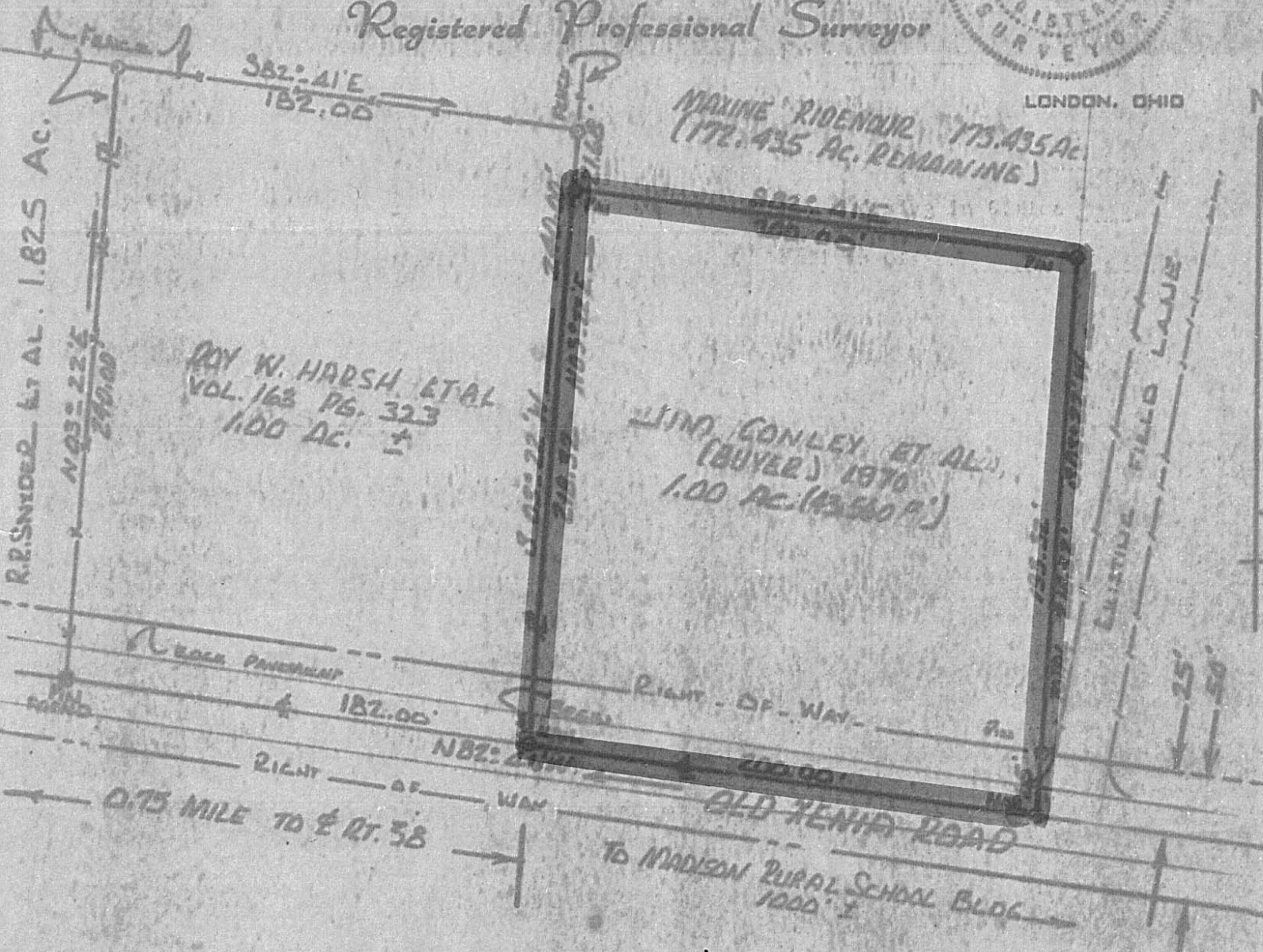


Rodger Irwin Baker S-5539



Registered Professional Surveyor



ROY W. HARSH ET AL
VOL. 163 PG. 323
1.00 AC.

JIM CONLEY ET AL
(BUYER) 1970
1.00 AC. (AS SHOWN)

MAXINE RIDENOUR, 173.435 AC.
(172.435 AC. REMAINING)

SCALE: 1"=60'

MAY 23, 1970

14C

ONE ACRE SURVEY FOR JIM CONLEY ET AL - VMS 4387
SITUATED ON OLD XENIA RD. ABOUT 3/8 MILE E. OF RT. 38
UNION TOWNSHIP - MADISON COUNTY - OHIO
PART OF 173.435 AC. MAXINE RIDENOUR
AS PER TAX MAP (UNION TWP)