

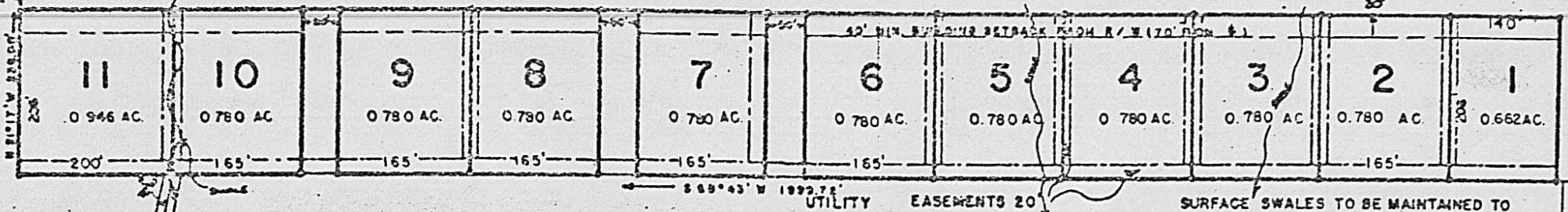
MADISON LAKE

Part of Deer Creek
Site of Structure
July 1934 013

6.61 AC. MADISON COUNTY FISH & GAME ASSOC.
DEED 142 PG. 399
14.17 AC.
DEED VOL. 140
PG. 537

CALVIN WILLIAMSON 0.70 AC. DEED 208 PG. 407
WM. H. KELLY 0.690 AC. DEED 208 PG. 277
MARSHALL BURDETTE 0.688 AC. DEED 203 PG. 223

A. K. SALYER
11.314 AC.
D. 213 PG. 77



EASEMENTS SHOWN ARE FOR THE PURPOSES OF INSTALLATION AND MAINTENANCE OF SAID UTILITIES AND THE RIGHT AT ALL TIMES OF INGRESS AND EGRESS.

CHESELDINE ESTATES

UNION TWP., V.M.S. 3844
LOTS CONTAINING A TOTAL OF 6.628 ACRES EXCLUSIVE OF RIGHT-OF-WAY ... A PORTION OF 30.766 ACRES IN THE NAME OF WEST JEFFERSON INVESTMENT COMPANY...DEED VOL.188 PG.210

SURFACE SWALES TO BE MAINTAINED TO PROVIDE OUTLETS FOR COUNTY ROADSIDE DRAINAGE, ETC.

ROAD R/W TO BE DEDICATED FROM N.W. CORNER LOT 11 TO S.E. CORNER

LOT 1 = 1.543 AC. (30' FROM &)	
ACRES ORIG. TRACT	30.766
ACRES IN LOTS	6.628
ROAD DEDICATION	1.543
RESIDUAL =	20.595

UNION TWP
OAK RUN TWP

CURTIS G. BAUGESS
DEED 215 PG. 280
17.737 AC.

DONALD ROBERTSON
1.010 AC
DEED VOL. 181
PAGE 18

FARM POOD
EDGAR BURNETT
84.37 AC
DEED VOL. 180

JAMES D. POTTS, SR.
1.010 AC.
DEED VOL. 207
PAGE 414



SURVEYED MAY 1974
ENGINEERING BY M.R. Paul
M.R. PAUL P.S. 001311
M.R. PAUL P.E. 02113

THE UNDERSIGNED DOES HEREBY AGREE AS COMPANY TO THE SUBDIVISION CHESELDINE

17B